

Appendix C

POS RECOMMENDATIONS



TOWN OF
VICTORIA PARK



WE'RE OPEN
VIC PARK

CONTENTS

1.0 INTRODUCTION	3	4.3 READ PARK	22	5.9 DEVENISH RESERVE	41	7.5 ORRONG ROAD VERGE	60
2.0 BURSWOOD	4	4.4 HAWTHORNE RESERVE	23	5.10 VICTORIA HEIGHTS PARK	42	7.6 CARLISLE RESERVE	61
2.1 BALBUK RESERVE	5	4.5 RAPHAEL PARK	24	5.11 ISAIA CORNER	43	7.7 PARNHAM PARK	62
2.2 THE PROMENADE	6	4.6 ASQUITH RESERVE	25	5.12 JOHN BISSETT PARK	44	8.0 ST. JAMES	63
2.3 THE MEWS	7	4.7 CANNING HIGHWAY VERGE	26	5.13 MINT STREET RESERVE	45	8.1 ALDAY STREET RESERVE	64
2.4 THE CIRCUS	8	4.8 MCCALLUM PARK & TAYLOR RESERVE	27	5.14 KATE STREET RESERVE	46	8.2 BEACONSFIELD STREET VERGE	65
2.5 CHARNLEY GARDENS & PALLINUP STREET	9	4.10 SUNBURY RESERVE	28	5.15 SHEPPERTON ROAD VERGES	47	8.3 ROTARY PARK	66
2.6 VANTAGE WAY & OLDFIELD STREET	10	4.11 DUNCAN RESERVE	29	5.16 SOMERSET PARK	48	8.4 HOUGHTON PARK	66
2.7 VANTAGE WAY & BOW RIVER CRESCENT	11	4.12 MEMORIAL GARDENS	30	6.0 LATHLAIN	49	9.0 CURTIN UNIVERSITY & BENTLEY	68
2.8 BOW RIVER CRESCENT & BOLTON AVENUE	12	5.0 EAST VICTORIA PARK	31	6.1 J.A. LEE RESERVE	50	9.1 JIRDARUP BUSHLAND PRECINCT	69
2.10 BOW RIVER CRESCENT VERGE	13	5.1 HIGGINS PARK	32	6.2 RAYMENT PARK	51	9.3 HAROLD ROSSITER PARK	70
2.11 GOODWOOD PARADE VERGE	14	5.2 PLAYFIELD RESERVE	33	6.3 RUTLAND RESERVE	52	9.4 KENT STREET VERGE	71
2.12 STILES GRIFFITHS RESERVE	15	5.3 JOHN MACMILLAN PARK	34	6.4 LATHLAIN PARK COMMUNITY ACTIVE SPACE	53	10.0 WELSHPOOL	72
3.0 CAUSEWAY	16	5.3 MANNERS RESERVE	35	6.5 FORSTER AVENUE RESERVE	54	10.1 FORWARD RESERVE	73
3.1 G.O. EDWARDS PARK	17	5.4 MAZZINI RESERVE	36	7.0 CARLISLE	55		
3.2 CHARLES PATERSON PARK	18	5.5 HILL VIEW BUSHLAND	37	7.1 MILLER'S CROSSING	56		
4.0 VICTORIA PARK	19	5.6 EDWARD MILLEN PARK	38	7.2 TOM WRIGHT PARK	57		
4.1 STATE STREET RESERVE	20	5.7 FRASER PARK	39	7.3 GEMINI WAY SUMP	58		
4.2 MILLER STREET RESERVE	21	5.8 ALEC BELL PARK	40	7.4 FLETCHER PARK	59		

Prepared by:



INTRODUCTION

Previous maps in the POS Strategy utilised Town of Victoria Park (ToVP) Place Area boundaries as a basis of the analysis as this is how the demographic statistics are presented.

The Town utilises a Place approach to plan and manage POS. The Place Areas, shown in Figure 1, are slightly different boundaries to Town of Victoria Park Place Areas. The Town plan and manage each 'Place' through a Place Plan. This Appendix is intended to feed in to the development of Place Plans and is delivered accordingly to ensure symmetry with the ToVP planning approach and to make it easier for the community to know what is planned for each neighbourhood.

Only Town managed POS are considered within this section.

This Appendix provides detailed approaches to the delivery of Phase Three of the Public Open Space Strategy and should be read in conjunction with this document.

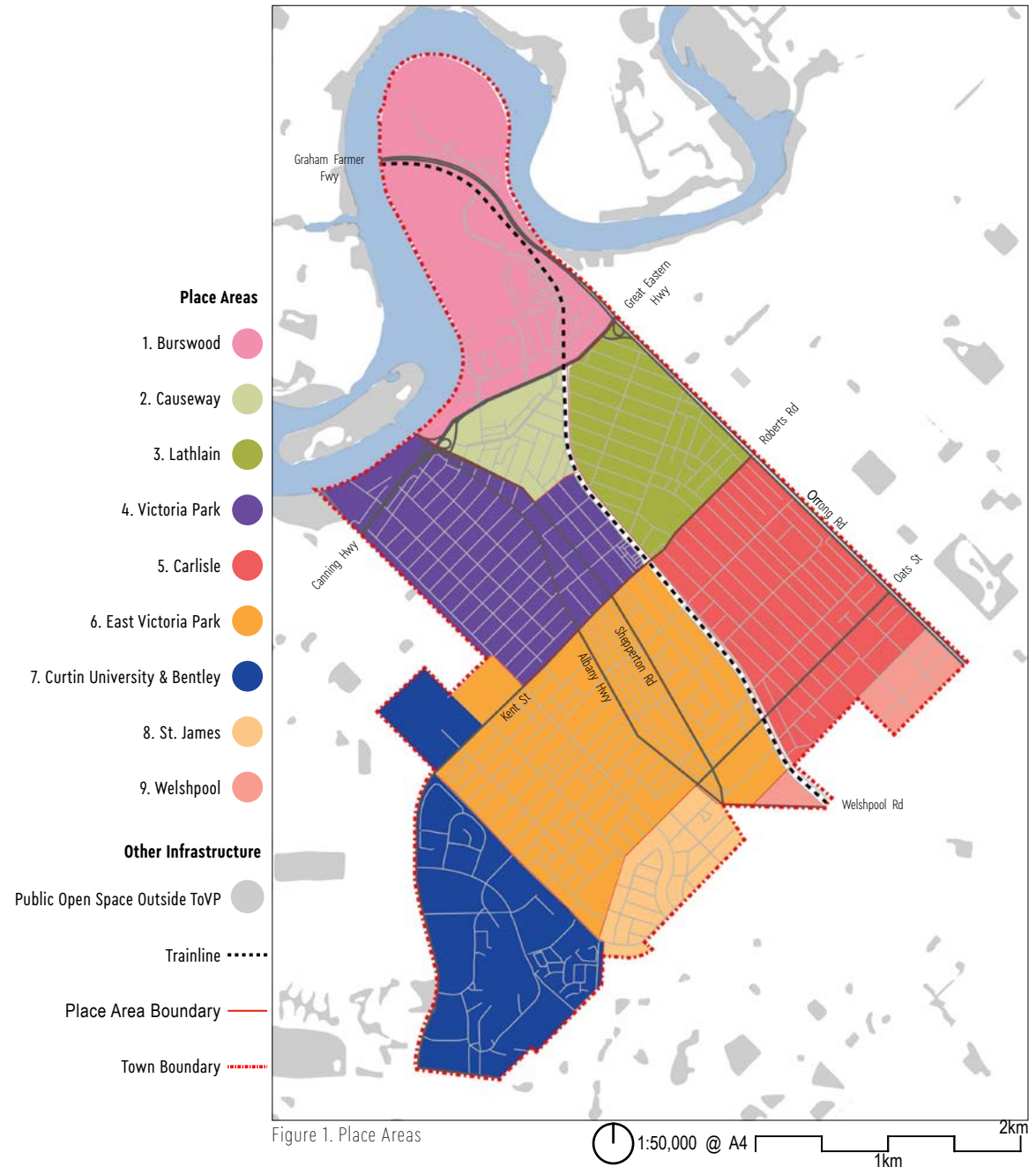


Figure 1. Place Areas

BURSWOOD

BURSWOOD



POS	Balbuk Reserve*	
Size	2Ha	
Hierarchy/Function/Setting	Neighbourhood/ Passive / Traditional	
Approach 3: Improve Quality to Existing POS		
Recommendation		Comment
Public Open Space for sporting use	✓	The boat ramp and water ski area are to be considered in line with sporting use of this POS.
Public Open Space for environmental use	✓	Rehabilitate foreshore, remove turf between road and river and rehabilitate with endemic species.
Tree Coverage	✓	Achieve +60% Tree Canopy Cover.
Reduction of Turf	✗	
Reduce Water Use	✗	
Heritage Value	✗	Explore opportunity for interpretation at boat ramp.
Play	✗	
Active Transport	✗	
Wayfinding	✓	Integrate wayfinding with broader River Foreshore, including future Belmont Peninsula development & adjoining City of Belmont POS.
Dog Walking	✗	
Community Ownership	✗	
Events	✗	
Safety	✓	Review lighting, sight lines and implement CPTED principles given isolated location.
Supporting Local Economy	✗	



* There is a shared management/maintenance arrangement in place between the Town and the City of Belmont. The Town acknowledges the need to work collaboratively on planning and future improvements of this POS.

Note: There is a need to implement a collaborative approach that considers the *Belmont Foreshore Precinct Plan* (2018) as well as consulting with the City of Belmont.

BURSWOOD

POS	The Promenade	
Size	0.88Ha	
Hierarchy/Function/Setting	Local / Passive / Traditional	
Approach 3: Improve Quality to Existing POS		
Recommendation		Comment
Public Open Space for sporting use	✗	
Public Open Space for environmental use	✗	
Tree Coverage	✓	Achieve 40% Tree Canopy Cover Increase shade trees to north of play space to negate replacing shade cloth in future.
Reduction of Turf	✗	
Reduce Water Use	✗	
Heritage Value	✗	
Play	✓	Anecdotally in WA, younger families are most likely to live in higher density, as such future upgrades to this playground should consider provision of play equipment (nature/adventure play) for babies and young children.
Active Transport	✗	
Wayfinding	✗	
Dog Walking	✗	
Community Ownership	✗	
Events	✗	
Safety	✗	
Supporting Local Economy	✗	



BURSWOOD

POS	The Mews	
Size	0.41Ha	
Hierarchy/Function/Setting	Micro/ Passive / Traditional	
Approach 3: Improve Quality to Existing POS		
Recommendation		Comment
Public Open Space for sporting use	✗	
Public Open Space for environmental use	✗	
Tree Coverage	✓	Achieve 40% Tree Canopy Cover
Reduction of Turf	✓	Consolidate turf to active spaces and replace underutilised areas with mulch/garden bed.
Reduce Water Use	✗	
Heritage Value	✗	
Play	✓	Provide informal play/sport for youth, such as hoops, goals or similar to encourage active use by surrounding families.
Active Transport	✗	
Wayfinding	✗	
Dog Walking	✗	
Community Ownership	✓	Encourage local residents to take ownership of Public Open Space through workshops and active days to encourage use
Events	✗	
Safety	✗	
Supporting Local Economy	✗	



BURSWOOD

POS	The Circus	
Size	0.41Ha	
Hierarchy/Function/Setting	Local / Passive / Traditional	
Approach 3: Improve Quality to Existing POS		
Recommendation		Comment
Public Open Space for sporting use	✗	
Public Open Space for environmental use	✗	
Tree Coverage	✓	Achieve 40% Tree Canopy Cover
Reduction of Turf	✓	Consolidate turf to active spaces and replace underutilised areas with mulch/garden bed.
Reduce Water Use	✗	
Heritage Value	✗	
Play	✗	
Active Transport	✗	
Wayfinding	✗	
Dog Walking	✗	
Community Ownership	✗	
Events	✗	
Safety	✗	
Supporting Local Economy	✗	



BURSWOOD

POS	Charnley Gardens & Pallinup Street	
Size	0.14Ha & 0.4Ha	
Hierarchy/Function/Setting	Micro / Passive / Traditional	
Approach 3: Improve Quality to Existing POS		
Recommendation		Comment
Public Open Space for sporting use	✗	
Public Open Space for environmental use	✗	
Tree Coverage	✓	Achieve 40% Tree Canopy Cover.
Reduction of Turf	✓	Increase native vegetation and reduce turf, consider utilising vegetation to create green fence.
Reduce Water Use	✗	
Heritage Value	✗	
Play	✓	Provide informal play/sport for youth, such as hoops, goals or similar to encourage active use by surrounding families.
Active Transport	✗	
Wayfinding	✗	
Dog Walking	✗	
Community Ownership	✓	Encourage local residents to take ownership of Public Open Space through workshops and active days to encourage use.
Events	✓	
Safety	✓	
Supporting Local Economy	✓	



BURSWOOD

POS	Vantage Way/ Oldfield Street	
Size	0.15Ha	
Hierarchy/Function/ Setting	Micro/ Passive / Traditional	
Approach 3: Improve Quality to Existing POS		
Recommendation		Comment
Public Open Space for sporting use	✗	
Public Open Space for environmental use	✗	
Tree Coverage	✓	Achieve 40% Tree Canopy Cover.
Reduction of Turf	✗	
Reduce Water Use	✗	
Heritage Value	✗	
Play	✗	
Active Transport	✗	
Wayfinding	✗	
Dog Walking	✗	
Community Ownership	✓	Local residents to take ownership of Public Open Space through workshops and active days to encourage use.
Events	✗	
Safety	✗	
Supporting Local Economy	✗	



BURSWOOD

POS	Vantage Way/ Bow River Crescent	
Size	0.15Ha	
Hierarchy/Function/ Setting	Micro/ Passive / Traditional	
Approach 3: Improve Quality to Existing POS		
Recommendation		Comment
Public Open Space for sporting use	✗	
Public Open Space for environmental use	✗	
Tree Coverage	✓	Achieve 40% Tree Canopy Cover.
Reduction of Turf	✓	Consolidate turf to active spaces and replace others with garden beds.
Reduce Water Use	✗	
Heritage Value	✗	
Play	✓	Provision of small play/recreational facility space for adjoining residents to utilise, hoops, nature play space for babies/young children and/or ping pong table.
Active Transport	✗	
Wayfinding	✗	
Dog Walking	✗	
Community Ownership	✗	
Events	✗	
Safety	✗	
Supporting Local Economy	✗	



BURSWOOD

POS	Bow River Crescent & Bolton Avenue	
Size	0.18Ha	
Hierarchy/Function/Setting	Micro/ Passive / Traditional	
Approach 3: Improve Quality to Existing POS		
Recommendation		Comment
Public Open Space for sporting use	✗	
Public Open Space for environmental use	✗	
Tree Coverage	✓	Achieve 40% Tree Canopy Cover.
Reduction of Turf	✗	
Reduce Water Use	✗	
Heritage Value	✗	
Play	✓	Exercise equipment and interpretive signage to facilitate active use through grade change.
Active Transport	✗	
Wayfinding	✗	
Dog Walking	✗	
Community Ownership	✗	
Events	✗	
Safety	✗	
Supporting Local Economy	✗	



BURSWOOD

POS	Bow River Crescent Verge	
Size	0.06Ha	
Hierarchy/Function/Setting	Micro/ Passive / Traditional	
Approach 3: Improve Quality to Existing POS		
Recommendation		Comment
Public Open Space for sporting use	✗	
Public Open Space for environmental use	✗	
Tree Coverage	✓	Achieve 40% Tree Canopy Cover.
Reduction of Turf	✗	
Reduce Water Use	✗	
Heritage Value	✗	
Play	✗	
Active Transport	✗	
Wayfinding	✗	
Dog Walking	✗	
Community Ownership	✓	Local residents to take ownership of Public Open Space through workshops and active days to encourage use.
Events	✗	
Safety	✗	
Supporting Local Economy	✗	



BURSWOOD

POS	Goodwood Parade Verge	
Size	0.08Ha	
Hierarchy/Function/Setting	Micro/ Passive / Traditional	
Approach 3: Improve Quality to Existing POS		
Recommendation		Comment
Public Open Space for sporting use	✗	
Public Open Space for environmental use	✗	
Tree Coverage	✓	Achieve 40% Tree Canopy Cover.
Reduction of Turf	✓	Remove Turf and add vegetation/ mulch.
Reduce Water Use	✗	
Heritage Value	✗	
Play	✗	
Active Transport	✗	
Wayfinding	✗	
Dog Walking	✗	
Community Ownership	✗	
Events	✗	
Safety	✗	
Supporting Local Economy	✗	



BURSWOOD

POS	Stiles Griffiths Reserve
Size	0.21Ha
Hierarchy/Function/Setting	Micro / Passive / Traditional
Approach 3: Improve Quality to Existing POS	
<p>A concept plan is currently being developed for Stiles Griffiths Reserve. This concept plan is being developed to ensure that Stiles Griffiths Reserve supports the proposed redevelopment and intensification of density in the surrounding area.</p> <p>It is noted that Stiles Griffiths Reserve is zoned 'Office/Residential' under the Town of Victoria Park <i>Town Planning Scheme No. 1</i>. Priority should be given to rezoning this portion of land to reserve it for the purpose of public open space, securing its future as POS.</p>	



CAUSEWAY

CAUSEWAY

POS	G.O. Edwards Park	
Size	10.11Ha	
Hierarchy/Function/Setting	District/ Passive / Traditional – Wetland	
Approach 3: Improve Quality to Existing POS		
Recommendation		Comment
G.O. Edwards Park has an existing masterplan over the site that is currently being implemented. No additional works beyond the implementation of this masterplan are recommended.		
Public Open Space for sporting use	✗	
Public Open Space for environmental use	✗	
Tree Coverage	✓	Achieve +60% Tree Canopy Cover.
Reduction of Turf	✗	
Reduce Water Use	✗	
Heritage Value	✗	
Play	✗	
Active Transport	✗	
Wayfinding	✗	
Dog Walking	✗	
Community Ownership	✗	
Events	✗	
Safety	✓	Review lighting, sight lines and implement CPTED principles given isolated location.
Supporting Local Economy	✗	



CAUSEWAY

POS	Charles Paterson Park	
Size	2.73Ha	
Hierarchy/Function/Setting	Neighbourhood/ Passive / Traditional	
Approach 3: Improve Quality to Existing POS		
Recommendation		Comment
It is recommended that a concept plan be prepared to guide future upgrades of this open space.		
Public Open Space for sporting use	✓	Encourage Public Open Space for sporting use, significant open turf and ability to park in adjoining mixed commercial/residential area. Site can accommodate 1-2 fields.
Public Open Space for environmental use	✗	
Tree Coverage	✓	Achieve 30% tree canopy coverage – ensuring trees do not impact on future sporting field locations.
Reduction of Turf	✓	Reduce turf to boundary of POS with native planting that will also provide green fence to traffic.
Reduce Water Use	✓	Install Smart Irrigation System.
Heritage Value	✗	
Play	✓	Install adult recreational facilities, such as table tennis or outdoor gym to support use of space by workers of adjoining commercial area.
Active Transport	✓	Integrate active transport infrastructure to support use as an Active Park Street.
Wayfinding	✓	Integrate into wayfinding strategy that supports the pedestrian movement between the residential areas and the river foreshore safely and supports the adjacent Active Park street approach.
Dog Walking	✓	Provide formal Dog Park.
Community Ownership	✗	
Events	✓	Create formal event space with installation of lighting and services. Given lack of neighbours and parking availability this park is suitable for events. Events should consider the impact of noise and lighting on local bird-life in adjoining G O Edwards Park.
Safety	✗	
Supporting Local Economy	✗	



VICTORIA PARK

VICTORIA PARK

POS	State Street Reserve	
Size	0.06Ha	
Hierarchy/Function/Setting	Micro/ Passive / Traditional	
Approach 3: Improve Quality to Existing POS		
Recommendation		Comment
<p>A small Public Open Space retrofitted into a residential lot, infrastructure to this park looks relatively new. Given the recommendations of this strategy to retrofit other lots/basins for Micro-Park use it is suggested that a small case study of this park be undertaken to gauge community uptake and opinion of a park this size and with these features. Outcomes should be used to guide development of drainage basin lots, especially those adjacent to residential lots.</p>		



VICTORIA PARK

POS	Miller Street Reserve	
Size	0.1Ha	
Hierarchy/Function/Setting	Micro / Passive / Traditional	
Approach 3: Improve Quality to Existing POS		
Recommendation		Comment
Public Open Space for sporting use	✗	
Public Open Space for environmental use	✗	
Tree Coverage	✓	Achieve 40% Tree Canopy Cover.
Reduction of Turf	✓	Remove turf and plant vegetation buffer to highlighted areas to provide green fence to site.
Reduce Water Use	✗	
Heritage Value	✗	
Play	✗	
Active Transport	✗	
Wayfinding	✗	
Dog Walking	✗	
Community Ownership	✓	Implement community engagement program to encourage ongoing ownership of park, development of park infrastructure and to improve social and mental health of nearby residents.
Events	✗	
Safety	✗	
Supporting Local Economy	✗	

*Refer to Phase Two of Public Open Spaces Strategy for Further Recommendations



VICTORIA PARK

POS	Read Park	
Size	0.8Ha	
Hierarchy/Function/Setting	Local / Passive / Traditional	
Approach 3: Improve Quality to Existing POS		
Recommendation		Comment
Public Open Space for sporting use	✗	
Public Open Space for environmental use	✗	
Tree Coverage	✓	Achieve 40% Tree Canopy Cover.
Reduction of Turf	✓	Replace turf under trees with native vegetation or mulch.
Reduce Water Use	✗	
Heritage Value	✗	
Play	✓	Provide Shade Options (Trees) for exercise nook.
Active Transport	✓	Integrate active transport infrastructure to support use as an Active Park Street.
Wayfinding	✓	As a POS situated on the proposed Active Park Street interpretive wayfinding and signage should integrate the space to the broader Park Street.
Dog Walking	✗	
Community Ownership	✗	
Events	✗	
Safety	✗	
Supporting Local Economy	✓	As an Active Park street adjacent the cafe strip implement approaches such as wifi, dining spaces and art/interpretation.



VICTORIA PARK

POS	Hawthorne Reserve	
Size	0.95Ha	
Hierarchy/Function/Setting	Local / Passive / Traditional	
Approach 3: Improve Quality to Existing POS		
Recommendation		Comment
Undertake a masterplan for this Public Open Space that considers the needs of the local community.		
Public Open Space for sporting use	✗	
Public Open Space for environmental use	✗	
Tree Coverage	✓	Achieve 40% Tree Canopy Cover.
Reduction of Turf	✓	Remove Turf in areas that are not intended for actives use, specifically on steep slopes. Replace with locally native vegetation.
Reduce Water Use	✗	
Heritage Value	✗	
Play	✓	Retain section of turf to provide level playing fields for informal games and sports. Upgrades to playground to support older children / young adult independent play, such as basketball hoops, table tennis or similar.
Active Transport	✗	
Wayfinding	✗	
Dog Walking	✓	Suitable for use as dog park if clashes occur with sporting uses in other local parks.
Community Ownership	✓	Implement community engagement program to encourage ongoing ownership of park, development of park infrastructure and to improve social and mental health of nearby residents.
Events	✗	
Safety	✗	
Supporting Local Economy	✗	



VICTORIA PARK

POS	Raphael Park	
Size	5.9Ha	
Hierarchy/Function/Setting	District/ Active/ Traditional Note: Park is used by local schools.	
Approach 3: Improve Quality to Existing POS		
Recommendation		Comment
Public Open Space for sporting use	✓	Highly utilised in winter by formal sports clubs, appears to have some summer availability. Additional Public Open Space for sporting use on this oval should be managed alongside use by local schools.
Public Open Space for environmental use	✓	As a POS on an Environmental Park Street the south-west boundary of the site should strengthen the Park street approach.
Tree Coverage	✓	Achieve 30% Tree Canopy Cover.
Reduction of Turf	✓	Consolidate turf to active spaces and replace underutilised areas with mulch/ garden bed.
Reduce Water Use	✓	Install Smart Irrigation System.
Heritage Value	✗	
Play	✓	Expansion of play space to incorporate nature play elements aimed at children 0–10 to support use by both school children and to encourage parents and carers who may have younger children to utilise the space before and after school.
Active Transport	✓	Provide facilities to support active transport to and from the park.
Wayfinding	✓	Wayfinding should be implemented to support the Active and Environmental Park Street approach to the south-west of the POS.
Dog Walking	✓	Monitor ongoing use as a formal dog park for potential clashes with sporting and school use.
Community Ownership	✗	
Events	✗	
Safety	✗	
Supporting Local Economy	✗	



VICTORIA PARK

POS	Asquith Reserve	
Size	0.24Ha	
Hierarchy/Function/Setting	Micro/ Passive / Traditional	
Approach 3: Improve Quality to Existing POS		
Recommendation		Comment
Public Open Space for sporting use	✗	
Public Open Space for environmental use	✗	
Tree Coverage	✓	Achieve +60% Tree Canopy Cover.
Reduction of Turf	✓	Remove turf and replace with water sensitive garden beds.
Reduce Water Use	✗	
Heritage Value	✓	The site contains the ToVP Windmill & Wishing Well which are listed on the state heritage register (place number: 03898). The windmill was built in 1938 to advertise roof tiles and previously also included a Lion, which was removed due to vandalism. Given the limitations of recreational use on this POS it is recommended that artistic exploration of this heritage is considered.
Play	✗	
Active Transport	✗	
Wayfinding	✗	
Dog Walking	✗	
Community Ownership	✗	
Events	✗	
Safety	✗	
Supporting Local Economy	✗	



VICTORIA PARK

POS	Canning Highway Verge	
Size	0.46Ha	
Hierarchy/Function/Setting	Local/ Passive / Traditional	
Approach 3: Improve Quality to Existing POS		
Recommendation		Comment
Public Open Space for sporting use	✗	
Public Open Space for environmental use	✗	
Tree Coverage	✓	Increase tree canopy to achieve coverage over 100% of site.
Reduction of Turf	✓	Remove all turf and replace with garden bed and mulch.
Reduce Water Use	✗	
Heritage Value	✗	
Play	✗	
Active Transport	✗	
Wayfinding	✓	Implement art/signage as wayfinding given prominent location.
Dog Walking	✓	
Community Ownership	✓	
Events	✓	
Safety	✓	
Supporting Local Economy	✓	



VICTORIA PARK

POS	McCallum Park & Taylor Reserve	
Size	10.53Ha & 7.5HA respectively	
Hierarchy/Function/Setting	District / Active – Events / Traditional	
Approach 3: Improve Quality to Existing POS		
Recommendation		Comment
The existing masterplan for Taylor Reserve and McCallum Park is supported by this strategy for implementation. For consideration during implementation are the following:		
Public Open Space for sporting use	✓	Pending development of the Hype Court with the community.
Public Open Space for environmental use	✓	Protect environmental value given river bank environment. This POS will form the end of the Environmental Park Street and should reflect this through wayfinding, signage and art.
Tree Coverage	✓	Achieve +60% Tree Canopy Cover.
Reduction of Turf	✓	Replaced proposed turf bank in the northern section to vegetation to align with vegetated river banks approach.
Reduce Water Use	✗	
Heritage Value	✓	Integrate heritage relevant to the River (Aboriginal and Colonial).
Play	✗	
Active Transport	✗	
Wayfinding	✓	Implement a wayfinding approach that is in line with the broader approach for the river foreshore area.
Dog Walking	✗	
Community Ownership	✗	
Events	✓	Reinforce space as event space and consider small scale events such as Food Trucks and local markets.
Safety	✓	Review lighting, sight lines and implement CPTED principles given isolated location.
Supporting Local Economy	✗	



VICTORIA PARK

POS	Sunbury Reserve	
Size	0.17Ha	
Hierarchy/Function/Setting	Micro/ Passive / Traditional	
Approach 3: Improve Quality to Existing POS		
Recommendation		Comment
Public Open Space for sporting use	✗	
Public Open Space for environmental use	✗	
Tree Coverage	✓	Achieve 40% Tree Canopy Cover.
Reduction of Turf	✓	Replace turf under trees with mulch/garden bed.
Reduce Water Use	✗	
Heritage Value	✗	
Play	✓	Relocate pathway to boundary of park and creating central open turf for active informal play.
Active Transport	✗	
Wayfinding	✗	
Dog Walking	✗	
Community Ownership	✓	Implement community engagement program to encourage ongoing ownership of park, development of park infrastructure and to improve social and mental health of nearby residents. Work with community group to develop approaches to active recreation in the park which may include community gathering spaces, bike tracks for younger children or soccer goal posts.
Events	✓	
Safety	✓	
Supporting Local Economy	✓	



VICTORIA PARK

POS	Duncan Reserve	
Size	0.22Ha	
Hierarchy/Function/Setting	Micro/ Passive / Traditional	
Approach 3: Improve Quality to Existing POS		
Recommendation		Comment
Public Open Space for sporting use	✓	
Public Open Space for environmental use	✗	
Tree Coverage	✓	Achieve +60% Tree Canopy Cover.
Reduction of Turf	✓	Consolidate turf into single usable space, remove turf from under trees and in non-active areas and replace with native vegetation.
Reduce Water Use	✗	
Heritage Value	✗	
Play	✓	Future upgrade to playground to consider use by schools close by, and parents/carers before and after school, specifically young children.
Active Transport	✗	
Wayfinding	✗	
Dog Walking	✗	
Community Ownership	✓	Implement community engagement program to encourage ongoing ownership of park, development of park infrastructure and to improve social and mental health of nearby residents.
Events	✗	
Safety	✗	
Supporting Local Economy	✗	



VICTORIA PARK

POS	Memorial Gardens	
Size	0.43Ha	
Hierarchy/Function/Setting	Local/ Passive / Traditional	
Approach 3: Improve Quality to Existing POS		
Recommendation		Comment
The Memorial Gardens are well maintained and provide shady respite along the Café Strip. It is recommended that a concept plan be prepared to guide future upgrades of this open space which takes into account the Streets Ahead document prepared by the Vic Park Collective.		
Public Open Space for sporting use	✗	
Public Open Space for environmental use	✗	
Tree Coverage	✓	Achieve 40% Tree Canopy Cover.
Reduction of Turf	✗	
Reduce Water Use	✗	
Heritage Value	✓	Acknowledge and enhance the heritage function of the space.
Play	✓	Given location next to cafés and shops consider a play space for small children or families.
Active Transport	✓	Integrate active transport infrastructure to support use as an Active Park Street.
Wayfinding	✓	As a POS situated on the proposed Active Park Street interpretive wayfinding and signage should integrate the space to the broader Park Street.
Dog Walking	✗	
Community Ownership	✗	
Events	✗	
Safety	✗	
Supporting Economy	Local	✓ As an Active Park street adjacent the cafe strip implement approaches such as wifi, dining spaces and art/interpretation.



EAST VICTORIA PARK

EAST VICTORIA PARK

POS	Higgins Park	
Size	5.75Ha	
Hierarchy/Function/Setting	District / Active / Traditional	
Approach 3: Improve Quality to Existing POS		
Recommendation		Comment
Note: this POS is currently undergoing a masterplan process.		
Public Open Space for sporting use	✓	Ensure ongoing use of this facility for Public Open Space for sporting use, as the site is currently very well utilised.
Public Open Space for environmental use	✗	
Tree Coverage	✓	Achieve 30% Tree Canopy Cover.
Reduction of Turf	✓	Remove turf from sloped boundary areas and replace with locally native garden beds.
Reduce Water Use	✓	Install Smart Irrigation System
Heritage Value	✗	
Play	✗	
Active Transport	✓	Inclusion of infrastructure such as safe bike locks, lighting, water fountains and shelter.
Wayfinding	✗	
Dog Walking	✗	
Community Ownership	✗	
Events	✓	Implement event strategy for the park to consider event activation opportunities and associated upgrades to infrastructure and management that would be required.
Safety	✗	
Supporting Local Economy	✗	



EAST VICTORIA PARK

POS	Playfield Reserve	
Size	0.8Ha	
Hierarchy/Function/Setting	Local/ Passive / Traditional-Bushland	
Approach 3: Improve Quality to Existing POS		
Recommendation		Comment
Note: this POS is currently undergoing a masterplan process.		
Public Open Space for sporting use	✗	
Public Open Space for environmental use	✗	
Tree Coverage	✓	Achieve 40% Tree Canopy Cover.
Reduction of Turf	✓	Consolidate turf into single usable space and remove turf from under trees and in non-active areas, replace with native vegetation.
Reduce Water Use	✗	
Heritage Value	✗	
Play	✓	Incorporate adventure play facilities aimed at older children. Include supporting infrastructure such as shelter, seating and tables to support parent/carer use of the POS.
Active Transport	✗	
Wayfinding	✗	
Dog Walking	✗	
Community Ownership	✓	Implement community engagement program to encourage ongoing ownership of park, development of park infrastructure and to improve social and mental health of nearby residents.
Events	✗	
Safety	✗	
Supporting Local Economy	✗	



EAST VICTORIA PARK

POS	John MacMillan Park	
Size	1.5Ha	
Hierarchy/Function/Setting	Neighbourhood/ Active-Events / Traditional	
Approach 3: Improve Quality to Existing POS		
Recommendation		Comment
Note: this POS is currently undergoing a masterplan process.		
Public Open Space for sporting use	✓	Given POS size consider future formal sporting use.
Public Open Space for environmental use	✗	
Tree Coverage	✓	Achieve 40% Tree Canopy Cover.
Reduction of Turf	✓	Consolidate turf to areas of active use. Replace underutilised turf with native vegetation or, where too shady, use mulch.
Reduce Water Use	✗	
Heritage Value	✓	Provide interpretation of the figs within the POS.
Play	✓	Given location next to shopping precinct and Albany Highway Café Strip upgrade playground to support active adventure play for older children 10-14.
Active Transport	✗	
Wayfinding	✗	
Dog Walking	✓	Encourage ongoing use as dog park given less clashes with Public Open Space for sporting use.
Community Ownership	✓	Implement community engagement program to encourage ongoing ownership of park, development of park infrastructure and to improve social and mental health of nearby residents.
Events	✓	Support ongoing use of John McMillan Park for events.
Safety	✓	Sight-lines from the car park, to the POS are being improved with the current works.
Supporting Local Economy	✓	Install wifi, shady seating and other facilities to support extended community use.



EAST VICTORIA PARK

POS	Manners Reserve	
Size	0.74Ha	
Hierarchy/Function/Setting	Local/ Passive / Traditional	
Approach 3: Improve Quality to Existing POS		
Recommendation		Comment
Undertake a masterplan for this Public Open Space that considers the needs of the local community.		
Public Open Space for sporting use	✗	
Public Open Space for environmental use	✗	
Tree Coverage	✓	Achieve 40% Tree Canopy Cover.
Reduction of Turf	✓	Remove turf under trees and to non-active or difficult to manage areas. Replace turf with native vegetation or, where too shady, use mulch.
Reduce Water Use	✗	
Heritage Value	✗	
Play	✓	Consolidate turf to areas of active use; consider retaining areas to create level turf areas for informal ball sports.
Active Transport	✗	
Wayfinding	✗	
Dog Walking	✓	Encourage ongoing use as dog park given less clashes with Public Open Space for sporting use.
Community Ownership	✓	Utilise the CRG along with local neighbours to develop a masterplan for the POS.
Events	✗	
Safety	✗	
Supporting Local Economy	✗	



EAST VICTORIA PARK

POS	Mazzini Reserve	
Size	0.65Ha	
Hierarchy/Function/Setting	Local / Passive / Traditional	
Approach 3: Improve Quality to Existing POS		
Recommendation		Comment
Undertake a masterplan for this Public Open Space that considers the needs of the local community.		
Public Open Space for sporting use	✗	
Public Open Space for environmental use	✗	
Tree Coverage	✓	Achieve 40% Tree Canopy Cover.
Reduction of Turf	✓	Remove turf under trees and to non-active or difficult to manage areas. Replace turf with native vegetation or, where too shady, mulch.
Reduce Water Use	✗	
Heritage Value	✗	
Play	✓	Consolidate turf to areas of active use; consider retaining areas to create level turf areas for informal ball sports.
Active Transport	✗	
Wayfinding	✗	
Dog Walking	✓	Encourage ongoing use as dog park given less clashes with Public Open Space for sporting use.
Community Ownership	✓	Utilise the CRG along with local neighbours to develop a masterplan for the POS.
Events	✗	
Safety	✗	
Supporting Local Economy	✗	



EAST VICTORIA PARK

POS	Hill View Bushland	
Size	1.01Ha	
Hierarchy/Function/Setting	Local / Environmental / Bushland	
Approach 3: Improve Quality to Existing POS		
Recommendation		Comment
This Public Open Space is valuable remnant Banksia woodland and should be retained and managed as required.		



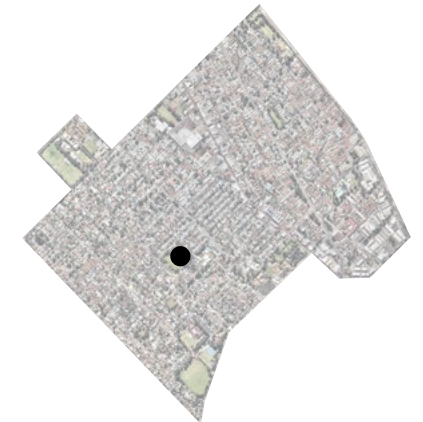
EAST VICTORIA PARK

POS	Edward Millen Reserve	
Size	3.12Ha	
Hierarchy/Function/Setting	Neighbourhood/ Passive / Traditional	
Approach 3: Improve Quality to Existing POS		
Recommendation		Comment
<p>A masterplan is currently being developed for the Edward Millen Reserve. This strategy supports the development of the Public Open Space in line with the briefing document provided to consultants. Special consideration should be made to:</p> <ul style="list-style-type: none"> - Implement event strategy for the park to consider event activation opportunities and associated upgrades to infrastructure and management that would be required, - Opportunity for landscape to provide interpretation of the sites heritage; and - The POS location along the Cafe Strip Active Park Street. 		



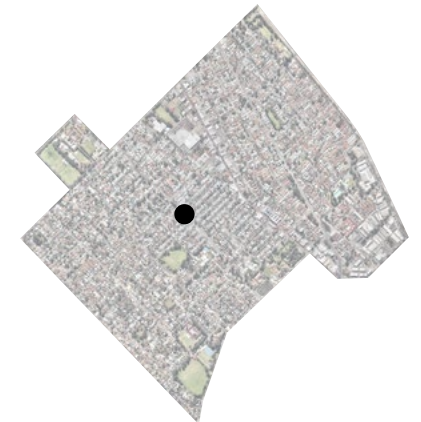
EAST VICTORIA PARK

POS	Fraser Park	
Size	3.3Ha	
Hierarchy/Function/Setting	Neighbourhood/ Active / Traditional	
Approach 3: Improve Quality to Existing POS		
Recommendation		Comment
Public Open Space for sporting use	✓	Ensure ongoing use of this facility for Public Open Space for sporting use, considering opportunities to encourage increased in Public Open Space for sporting use through winter and summer use that aligns with current user needs and ability to upkeep turf quality.
Public Open Space for environmental use	✗	
Tree Coverage	✓	Achieve 30% Tree Canopy Cover.
Reduction of Turf	✓	Remove turf from sloped boundary areas and replace with locally native garden beds.
Reduce Water Use	✓	As a large open turf field this reserve has potential to utilise significant water. Manage water consumption through the implementation of Smart Irrigation System, reduction of turf to surrounds and planting locally endemic species.
Heritage Value	✗	
Play	✗	
Active Transport	✓	Inclusion of infrastructure such as safe bike locks, lighting, water fountains and shelter.
Wayfinding	✗	
Dog Walking	✗	
Community Ownership	✗	
Events	✗	
Safety	✗	
Supporting Local Economy	✗	



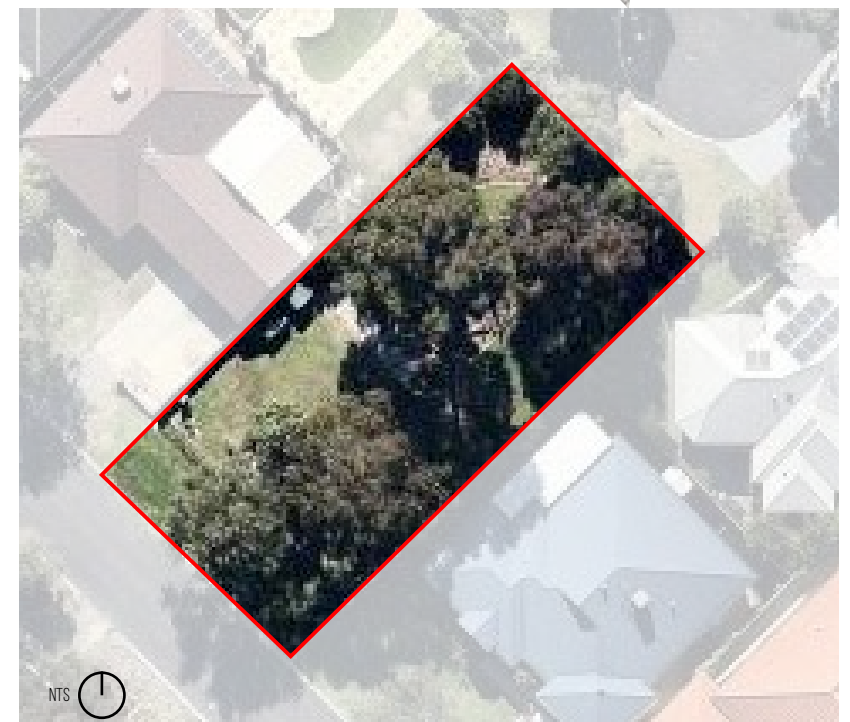
EAST VICTORIA PARK

POS	Alec Bell Park	
Size	0.08Ha	
Hierarchy/Function/Setting	Micro/ Passive / Traditional	
Approach 3: Improve Quality to Existing POS		
Recommendation		Comment
Public Open Space for sporting use	✗	
Public Open Space for environmental use	✗	
Tree Coverage	✓	Achieve 40% Tree Canopy Cover.
Reduction of Turf	✓	Consolidate turf into single usable space and remove turf from under trees and in non-active areas, replace with native vegetation.
Reduce Water Use	✗	
Heritage Value	✗	
Play	✓	Upgrade playground to for use by babies and toddlers given the site is fenced. Include supporting infrastructure such as shelter, seating and tables to support parent/ carer use of the POS.
Active Transport	✗	
Wayfinding	✗	
Dog Walking	✗	
Community Ownership	✓	Implement community engagement program to encourage ongoing ownership of park, development of park infrastructure and to improve social and mental health of nearby residents.
Events	✗	
Safety	✗	
Supporting Local Economy	✗	



EAST VICTORIA PARK

POS	Devenish Reserve	
Size	0.08Ha	
Hierarchy/Function/Setting	Micro/ Passive / Traditional	
Approach 3: Improve Quality to Existing POS		
Recommendation		Comment
<p>A small Public Open Space retrofitted into a residential lot, infrastructure to this park looks relatively new and high quality. No works to this Public Open Space are required, however given the recommendations of this strategy to retrofit other lots/basins for Micro-Park use it is suggested that a small case study of this park be undertaken to gauge community uptake and opinion of a park this size and with these features. Outcomes should be used to guide development of drainage basin lots, especially those adjacent to residential lots.</p>		



EAST VICTORIA PARK

POS	Victoria Heights Park	
Size	0.86Ha	
Hierarchy/Function/Setting	Local/ Passive / Traditional	
Approach 3: Improve Quality to Existing POS		
Recommendation		Comment
Victoria Heights is a good quality park with large canopy trees and densely planted garden beds.		
Public Open Space for sporting use	✗	
Public Open Space for environmental use	✗	
Tree Coverage	✓	Achieve 40% Tree Canopy Cover.
Reduction of Turf	✗	
Reduce Water Use	✗	
Heritage Value	✗	
Play	✓	Opportunity to level areas of turf to support independent informal sports.
Active Transport	✗	
Wayfinding	✗	
Dog Walking	✗	
Community Ownership	✓	Implement community engagement program to encourage ongoing ownership of park, development of park infrastructure and to improve social and mental health of nearby residents.
Events	✗	
Safety	✗	
Supporting Local Economy	✗	



EAST VICTORIA PARK

POS	Isaia Corner	
Size	0.12Ha	
Hierarchy/Function/Setting	Micro/ Passive / Traditional	
Approach 3: Improve Quality to Existing POS		
Recommendation		Comment
Public Open Space for sporting use	✗	
Public Open Space for environmental use	✗	
Tree Coverage	✓	Achieve 40% Tree Canopy Cover.
Reduction of Turf	✓	Consolidate turf into single usable space and incorporate native garden beds to boundary to hedge against road.
Reduce Water Use	✗	
Heritage Value	✗	
Play	✗	
Active Transport	✓	Integrate active transport infrastructure to support use as an Active Park Street.
Wayfinding	✓	As a POS situated on the proposed Active Park Street interpretive wayfinding and signage should integrate the space to the broader Park Street.
Dog Walking	✗	
Community Ownership	✗	
Events	✗	
Safety	✗	
Supporting Local Economy	✓	As an Active Park street adjacent the cafe strip implement approaches such as wifi, dining spaces and art/interpretation.



EAST VICTORIA PARK

POS	John Bissett Park	
Size	1.42Ha	
Hierarchy/Function/Setting	Neighbourhood/ Passive / Traditional	
Approach 3: Improve Quality to Existing POS		
Recommendation		Comment
Masterplan site to consolidate recreational infrastructure, with the intention to remove underutilised turf, provide clear sight lines and connected active uses.		
Public Open Space for sporting use	✗	
Public Open Space for environmental use	✗	
Tree Coverage	✓	Achieve 40% Tree Canopy Cover.
Reduction of Turf	✓	Consolidate turf to areas of active use. Remove turf under trees and to non-active or difficult to manage areas. Replace turf with native vegetation or, where too shady, use mulch.
Reduce Water Use	✗	
Heritage Value	✗	
Play	✓	Upgrade skate park.
Active Transport	✗	
Wayfinding	✗	
Dog Walking	✓	Encourage ongoing use as dog park given less clashes with Public Open Space for sporting use.
Community Ownership	✓	Utilise the CRG along with local neighbours to develop a masterplan for the POS.
Events	✗	
Safety	✗	
Supporting Local Economy	✗	



EAST VICTORIA PARK

POS	Mint Street Reserves	
Size	1.55Ha	
Hierarchy/Function/Setting	Neighbourhood/ Passive / Traditional	
Approach 3: Improve Quality to Existing POS		
Recommendation		Comment
Public Open Space for sporting use	✗	
Public Open Space for environmental use	✗	
Tree Coverage	✓	Achieve 40% Tree Canopy Cover.
Reduction of Turf	✓	This land is effectively road verge to a key feeder road, it is not feasible to utilise for recreational purpose. As such it is recommended that it is completely revegetated with endemic species and shade trees.
Reduce Water Use	✗	
Heritage Value	✗	
Play	✗	
Active Transport	✗	
Wayfinding	✓	Implement art/signage as wayfinding given prominent location.
Dog Walking	✗	
Community Ownership	✗	
Events	✗	
Safety	✓	Review lighting, sight lines and implement CPTED principles given this is a key pedestrian link.
Supporting Local Economy	✗	



EAST VICTORIA PARK

POS	Kate Street Reserve	
Size	1.05Ha	
Hierarchy/Function/Setting	Local/ Passive / Traditional	
Approach 3: Improve Quality to Existing POS		
Recommendation		Comment
Public Open Space for sporting use	✗	
Public Open Space for environmental use	✗	
Tree Coverage	✓	Achieve 40% Tree Canopy Cover.
Reduction of Turf	✓	Consolidate turf to areas of active use. Remove turf under trees and to non-active or difficult to manage areas. Replace turf with native vegetation or, where too shady, use mulch.
Reduce Water Use	✗	
Heritage Value	✗	
Play	✗	
Active Transport	✗	
Wayfinding	✗	
Dog Walking	✓	Encourage ongoing use as dog park given less clashes with Public Open Space for sporting use.
Community Ownership	✓	Implement community engagement program to encourage ongoing ownership of park, development of park infrastructure and to improve social and mental health of nearby residents.
Events	✗	
Safety	✗	
Supporting Local Economy	✗	



EAST VICTORIA PARK

POS	Shepperton Road Verge	
Size	0.9Ha	
Hierarchy/Function/Setting	Micro/ Passive / Traditional	
Approach 3: Improve Quality to Existing POS		
Recommendation		Comment
Public Open Space for sporting use	✗	
Public Open Space for environmental use	✗	
Tree Coverage	✓	Achieve 40% Tree Canopy Cover.
Reduction of Turf	✓	This land is effectively road verge to a key feeder road, it is not feasible to utilise for recreational purpose. As such it is recommended that it is completely revegetated with endemic species and shade trees.
Reduce Water Use	✗	
Heritage Value	✗	
Play	✗	
Active Transport	✗	
Wayfinding	✓	Implement art/signage as wayfinding given prominent location.
Dog Walking	✗	
Community Ownership	✗	
Events	✗	
Safety	✗	
Supporting Local Economy	✗	



EAST VICTORIA PARK

POS	Somerset Park	
Size	0.4Ha	
Hierarchy/Function/Setting	Local/ Passive / Traditional	
Approach 3: Improve Quality to Existing POS		
Recommendation		Comment
Public Open Space for sporting use		
Public Open Space for environmental use	✘	
Tree Coverage	✓	Achieve 40% Tree Canopy Cover.
Reduction of Turf	✘	
Reduce Water Use	✘	
Heritage Value	✘	
Play	✓	Given the location next to a car park this Public Open Space could be considered for a destination facility such as a water play, a large adventure playground or similar.
Active Transport	✘	
Wayfinding	✘	
Dog Walking	✘	
Community Ownership	✘	
Events	✘	
Safety	✓	The fence to the south of the park creates CEPTED issues and consideration for alternative, permeable treatments to this edge should be considered.
Supporting Local Economy	✘	



LATHLAIN

LATHLAIN

POS	J.A. Lee Reserve	
Size	0.05Ha	
Hierarchy/Function/Setting	Neighbourhood/ Active / Traditional	
Approach 3: Improve Quality to Existing POS		
Recommendation		Comment
Public Open Space for sporting use	✓	Ensure ongoing use of this facility for Public Open Space for sporting use, considering opportunities to encourage summer use and exercise by means of fitness equipment. The shape of J.A. Lee Reserve may restrict opportunity for diversification of sporting use, however consideration for increasing winter use through female or children's teams and/or other complimentary sports (Ultimate Frisbee, Touch Football etc.).
Public Open Space for environmental use	✗	
Tree Coverage	✓	Achieve 30% Tree Canopy Cover.
Reduction of Turf	✓	Install Smart Irrigation System
Reduce Water Use	✗	
Heritage Value	✗	
Play	✗	
Active Transport	✓	Inclusion of infrastructure such as safe bike locks, lighting, water fountains and shelter.
Wayfinding	✗	
Dog Walking	✗	
Community Ownership	✗	
Events	✗	
Safety	✗	
Supporting Local Economy	✗	



LATHLAIN

POS	Rayment Park	
Size	0.9Ha	
Hierarchy/Function/Setting	Local / Passive / Traditional	
Approach 3: Improve Quality to Existing POS		
Recommendation		Comment
Rayment Park has undergone recent upgrades inclusive of reduction in turf, a new nature playground, recreational facilities, dog exercise area and other supporting infrastructure there are no recommended changes or upgrades required to this space.		
Public Open Space for sporting use	✗	
Public Open Space for environmental use	✗	
Tree Coverage	✓	Achieve 40% Tree Canopy Cover.
Reduction of Turf	✗	
Reduce Water Use	✗	
Heritage Value	✗	
Play	✗	
Active Transport	✗	
Wayfinding	✓	Consider wayfinding within this park to support the ongoing development of this precinct as a central hub to Lathlain.
Dog Walking	✗	
Community Ownership	✗	
Events	✗	
Safety	✗	
Supporting Local Economy	✗	



LATHLAIN

POS	Rutland Reserve	
Size	0.06Ha	
Hierarchy/Function/Setting	Micro / Passive / Traditional	
Approach 3: Improve Quality to Existing POS		
Recommendation		Comment
Rutland Reserve has a unique land tenure status, being part road reserve, private and community managed.		



LATHLAIN

POS	Lathlain Park Community Activity Space	
Size	6.45Ha	
Hierarchy/Function/ Setting	District / Active-Events / Traditional	
Approach 3: Improve Quality to Existing POS		
Recommendation		Comment
Note: this POS is currently undergoing a masterplan process.		



LATHLAIN

POS	Forster Avenue Reserve	
Size	0.2Ha	
Hierarchy/Function/Setting	Micro / Passive / Traditional	
Approach 3: Improve Quality to Existing POS		
Recommendation		Comment
The use of this site for recreational Public Open Space purpose is not recommended due to poor CEPTED and accessibility. As such it is recommended that subject to community engagement, that the site be completely re-vegetated with endemic species to support local bird life in a manner that takes into account CPTED principles.		



CARLISLE

CARLISLE

Millers Crossing

Recommendations:

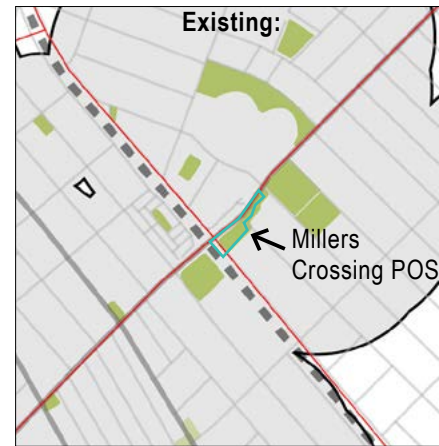
Millers Crossing was space retained by the state government for future road widening. This use is no longer required and has been offered for purchase to the Town. To assist with this decision the Public Open Space strategy has considered the retention of this space as POS.

With the development of Tom Wright Park (Zone 2X) the community will continue to have pedestrian access to local parks, i.e. no additional gaps will occur. It is noted that utilising a population calculation Carlisle is undersupplied by POS.

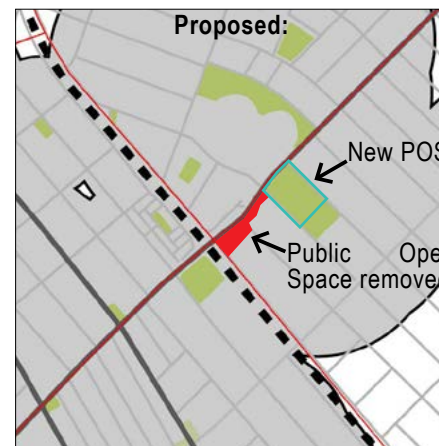
Millers Crossing has some significant trees, circled on map adjacent, both native and exotic species, and a good quality embankment vegetation to the north of the space. Other than bench seats there is no significant infrastructure on site.

It is strongly recommended that the Town work with the State Government to advocate for the requirement to retain all mature trees on this lot should it be developed into the future.

To date Millers Park has been considered Public Open Space by the community and maintained as such by the council. It should be noted that the community may oppose the development of this site.



- Existing Millers Crossing Public Open Space
- Walkable 'ped-shed'



- Millers Crossing Public Open Space removed
- New Public Open Space added
- Walkable 'ped-shed' unchanged



Significant trees to be retained where possible

CARLISLE

POS	Tom Wright Park	
Size	1.97Ha	
Hierarchy/Function/Setting	Neighbourhood / Passive / Traditional	
Approach 3: Improve Quality to Existing POS		
Recommendation		Comment
<p>The Tom Wright Park is proposed to be extended through the old Bowls Club site. These works are captured in the Community Activity Zone Design Report for Lathlain Precinct. The strategy supports the recommendations made for Tom Wright redevelopment with the following to be considered during design development;</p> <p>Ensure Open Turf areas are sized and shaped to support in Public Open Space for sporting use.</p> <p>Given the number of existing and proposed dog parks in the city review the need for the fenced dog space proposed.</p>		



CARLISLE

POS	Gemini Way Sump
Size	0.08Ha
Hierarchy/Function/Setting	Micro/ Passive / Traditional
Approach 3: Improve Quality to Existing POS	
<p>A Micro Park retrofitted into a residential lot, infrastructure to this park looks relatively new. Given the recommendations of this strategy to retrofit other lots/basins for Micro-Park use it is suggested that a small case study of this park be undertaken to gauge community uptake and opinion of a park this size and with these features. Outcomes should be used to guide development of drainage basin lots, especially those adjacent to residential lots.</p>	



CARLISLE

POS	Fletcher Park	
Size	4.23Ha	
Hierarchy/Function/Setting	Neighbourhood/ Active / Traditional	
Approach 3: Improve Quality to Existing POS		
Recommendation		Comment
Public Open Space for sporting use	✓	Ensure ongoing use of this facility for Public Open Space for sporting use, considering opportunities to encourage summer use. Fletcher Park is currently at capacity for sporting use and ongoing management of turf should be considered.
Public Open Space for environmental use	✗	
Tree Coverage	✓	Achieve 30% Tree Canopy Cover.
Reduction of Turf	✗	
Reduce Water Use	✓	Integrate Smart Irrigation Technology
Heritage Value	✗	
Play	✗	
Active Transport	✓	Inclusion of infrastructure such as safe bike locks, lighting, water fountains and shelter.
Wayfinding	✗	
Dog Walking	✗	
Community Ownership	✗	
Events	✓	Implement event strategy for the park to consider event activation opportunities and associated upgrades to infrastructure and management that would be required.
Safety	✗	
Supporting Local Economy	✗	



CARLISLE

POS	Orrong Road Verge	
Size	0.4Ha	
Hierarchy/Function/Setting	Local/ Passive / Traditional	
Approach 3: Improve Quality to Existing POS		
Recommendation		Comment
Current state government planning indicates potentially resume part of this verge by Main Roads. This should be taken into account prior to works being undertaken.		
Public Open Space for sporting use	✗	
Public Open Space for environmental use	✗	
Tree Coverage	✓	Achieve 100% Tree Canopy Cover.
Reduction of Turf	✓	This land is effectively road verge to a key feeder road, it is not feasible to utilise for recreational purpose. As such it is recommended that it is completely revegetated with endemic species and shade trees.
Reduce Water Use	✗	
Heritage Value	✗	
Play	✗	
Active Transport	✗	
Wayfinding	✓	Implement art/signage as wayfinding given prominent location.
Dog Walking	✗	
Community Ownership	✗	
Events	✗	
Safety	✗	
Supporting Local Economy	✗	



CARLISLE

POS	Carlisle Reserve	
Size	3.8Ha	
Hierarchy/Function/Setting	Neighbourhood/ Active / Traditional	
Approach 3: Improve Quality to Existing POS		
Recommendation		Comment
Public Open Space for sporting use	✓	Ensure ongoing use of this facility for Public Open Space for sporting use, considering opportunities to encourage increased winter and summer use that aligns with current user needs and ability to upkeep turf quality.
Public Open Space for environmental use	✗	
Tree Coverage	✓	Achieve 30% Tree Canopy Cover.
Reduction of Turf	✗	
Reduce Water Use	✓	Integrate Smart Irrigation Technology
Heritage Value	✗	
Play	✗	
Active Transport	✓	Inclusion of infrastructure such as safe bike locks, lighting, water fountains and shelter.
Wayfinding	✗	
Dog Walking	✗	
Community Ownership	✗	
Events	✗	
Safety	✗	
Supporting Local Economy	✗	



CARLISLE

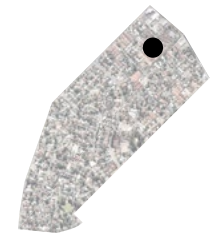
POS	Parnham Park	
Size	2.05Ha	
Hierarchy/Function/Setting	Neighbourhood/ Active / Traditional	
Approach 3: Improve Quality to Existing POS		
Recommendation		Comment
Public Open Space for sporting use	✓	Ensure ongoing use of this facility for Public Open Space for sporting use, considering opportunities to encourage increased winter and summer use that aligns with current user needs and ability to upkeep turf quality.
Public Open Space for environmental use	✗	
Tree Coverage	✓	Achieve 30% Tree Canopy Cover.
Reduction of Turf	✗	
Reduce Water Use	✓	Integrate Smart Irrigation Technology
Heritage Value	✗	
Play	✗	
Active Transport	✓	Inclusion of infrastructure such as safe bike locks, lighting, water fountains and shelter.
Wayfinding	✗	
Dog Walking	✗	
Community Ownership	✗	
Events	✓	Implement event strategy for the park to consider event activation opportunities and associated upgrades to infrastructure and management that would be required.
Safety	✗	
Supporting Local Economy	✗	



ST. JAMES

ST. JAMES

POS	Alday Street Reserve	
Size	0.14Ha	
Hierarchy/Function/Setting	Micro/ Passive / Traditional-Bushland	
Approach 3: Improve Quality to Existing POS		
Recommendation		Comment
Public Open Space for sporting use	✗	
Public Open Space for environmental use	✗	
Tree Coverage	✓	Achieve 40% Tree Canopy Cover.
Reduction of Turf	✓	Consolidate turf into single usable space and remove turf from under trees and in non-active areas, replace with native vegetation.
Reduce Water Use	✗	
Heritage Value	✗	
Play	✗	
Active Transport	✗	
Wayfinding	✗	
Dog Walking	✗	
Community Ownership	✓	Implement community engagement program to encourage ongoing ownership of park, development of park infrastructure and to improve social and mental health of nearby residents.
Events	✗	
Safety	✗	
Supporting Local Economy	✗	



ST. JAMES

POS	Beaconsfield Street/ Wyndham Street	
Size	0.19Ha	
Hierarchy/Function/ Setting	Micro / Passive / Traditional	
Approach 3: Improve Quality to Existing POS		
Recommendation		Comment
Public Open Space for sporting use	✓	
Public Open Space for environmental use	✗	
Tree Coverage	✓	Achieve 40% Tree Canopy Cover.
Reduction of Turf	✓	Consolidate turf into single usable space and remove turf from under trees and in non-active areas, replace with native vegetation.
Reduce Water Use	✗	
Heritage Value	✗	
Play	✗	
Active Transport	✗	
Wayfinding	✗	
Dog Walking	✗	
Community Ownership	✓	Implement community engagement program to encourage ongoing ownership of park, development of park infrastructure and to improve social and mental health of nearby residents.
Events	✗	
Safety	✗	
Supporting Local Economy	✗	



ST. JAMES

POS	Rotary Park	
Size	0.71Ha	
Hierarchy/Function/Setting	Local/ Passive / Traditional	
Approach 3: Improve Quality to Existing POS		
Recommendation		Comment
Rotary Park is under-serviced in comparison to other Public Open Space within the Town. Aside from existing mature trees, bench seats and basic playground facilities there is no infrastructure or vegetation on site. Undertake a masterplan for this Public Open Space that considers the needs of the local community.		
Public Open Space for sporting use	✗	
Public Open Space for environmental use	✗	
Tree Coverage	✓	Achieve 40% Tree Canopy Cover.
Reduction of Turf	✓	Remove turf under trees and to non-active or difficult to manage areas. Replace turf with native vegetation or, where too shady, use mulch.
Reduce Water Use	✗	
Heritage Value	✗	
Play	✓	Create level turf areas for informal ball sports.
Active Transport	✗	
Wayfinding	✗	
Dog Walking	✓	Encourage ongoing use as dog park given less clashes with Public Open Space for sporting use.
Community Ownership	✓	Utilise the CRG along with local neighbours to develop a masterplan for the POS. The process should encourage community ownership of park, development and implementation of park infrastructure and to improve social and mental health of nearby residents.
Events	✗	
Safety	✗	
Supporting Local Economy	✗	



ST. JAMES

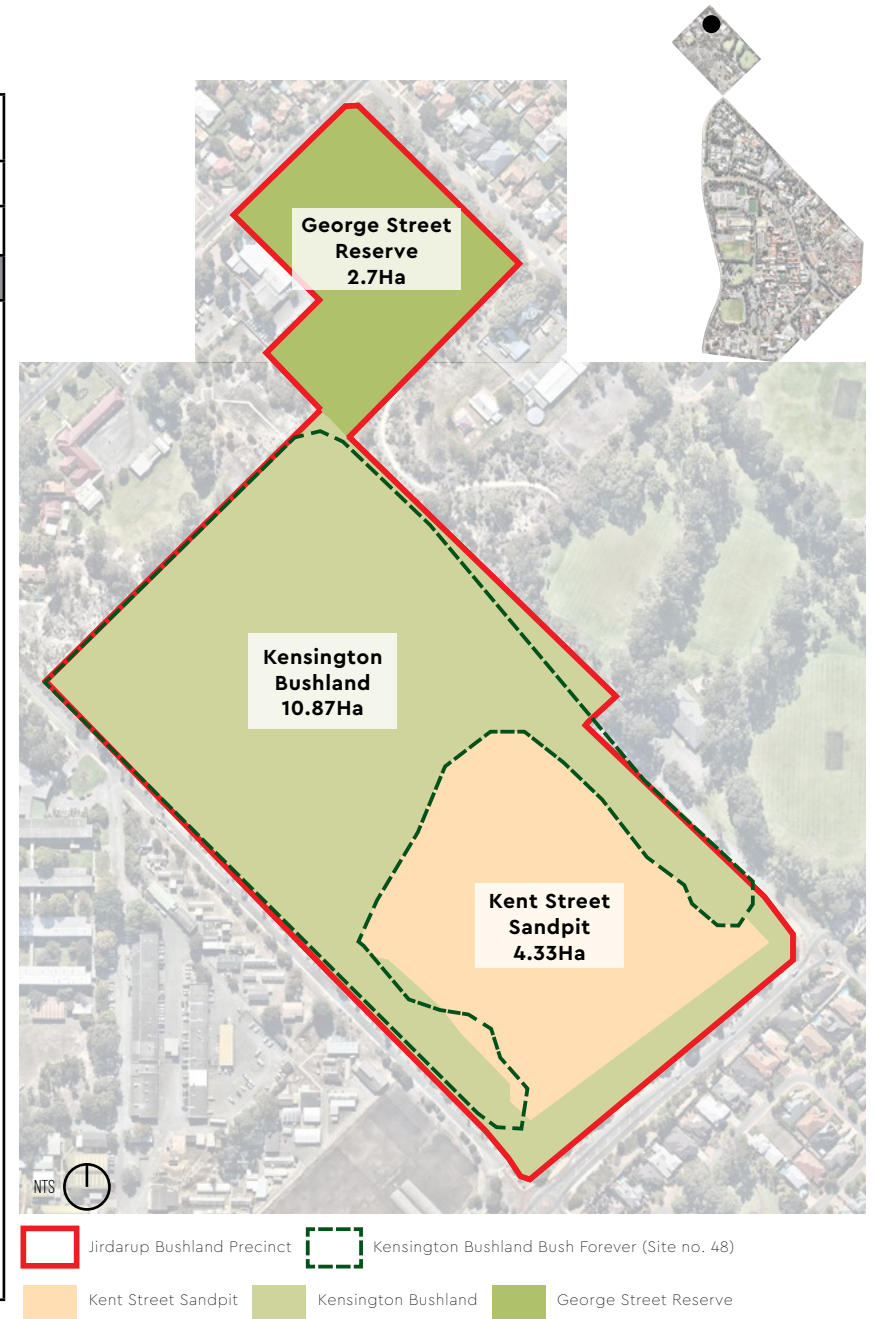
POS	Houghton Park	
Size	1.08Ha	
Hierarchy/Function/Setting	Neighbourhood/ Passive / Traditional	
Approach 3: Improve Quality to Existing POS		
Recommendation		Comment
Public Open Space for sporting use	✓	Ensure ongoing use of this facility for Public Open Space for sporting use.
Public Open Space for environmental use	✗	
Tree Coverage	✓	Achieve 40% Tree Canopy Cover.
Reduction of Turf	✓	Remove turf from boundary areas and replace with locally native garden beds.
Reduce Water Use	✓	Integrate Smart Irrigation Technology
Heritage Value	✗	
Play	✗	
Active Transport	✓	Inclusion of infrastructure such as safe bike locks, lighting, water fountains and shelter.
Wayfinding	✗	
Dog Walking	✗	
Community Ownership	✗	
Events	✗	
Safety	✗	
Supporting Local Economy	✗	



CURTIN UNIVERSITY & BENTLEY

CURTIN UNIVERSITY & BENTLEY

POS	Jirdarup Bushland Precinct
Size	17.9Ha
Hierarchy/Function/Setting	District/ Environmental / Bushland
Approach 3: Improve Quality to Existing POS	
<p>The Jirdarup Bushland Precinct comprises of sub precincts Kensington Bushland, George Street Reserve and Kent Street Sandpit. The sub precinct areas are as follows:</p> <p>Kensington Bushland: 10.87Ha (Kensington Bushland Bush Forever Site no. 48: 9.1Ha)</p> <p>George Street Reserve: 2.7Ha</p> <p>Kent Street Sandpit: 4.33Ha</p> <p>A management plan exists for the both the Kensington Bushland sub precinct and George Street Reserve precinct. All works for these sub precinct should be in accordance with the relevant management plan.</p> <p>The Kent Street Sandpit sub precinct incorporates a former quarry site which is not considered to be usable public open space in its present state. The future use of this site will be the subject of the preparation of a report to rehabilitate and re-vegetate the Kent Street Sand Pit ensuring the recommended options for the site:</p> <p>a) Is consistent with its zoning as a Parks and Recreation Reserve under the provisions of Town Planning Scheme No.1.</p> <p>b) Considers the past recommendations and decisions made in relation to the Kent Street Sand Pit site.</p> <p>c) Culminates in a plan for the Kent Street Sand Pit site including (but not limited to):</p> <ol style="list-style-type: none"> i. Design considerations (if any) ii. Site preparatory works iii. Environmental considerations iv. Community engagement v. Funding, staging and delivery considerations <p>To truly bring the Jirdarup Bushland Precinct together, it is recommended that when appropriate, the management plan for each sub precinct is brought together to form one management plan. This would allow the Town to consider the health of the precinct as a whole, as well as enabling it to continue to function as the most environmental significant bushland in the Town of Victoria Park.</p>	



CURTIN UNIVERSITY & BENTLEY

POS	Harold Rossiter Park	
Size	8.1Ha	
Hierarchy/Function/Setting	District/ Active / Traditional	
Approach 3: Improve Quality to Existing POS		
Recommendation		Comment
Undertake a masterplan for this Public Open Space that considers the needs of the local community.		
Public Open Space for sporting use	✓	Ensure ongoing use of this facility for Public Open Space for sporting use, investigating options for use in Winter. Consider upgrades to sport facilities to encourage female sporting teams.
Public Open Space for environmental use	✓	All works to Harold Rossiter Park should consider neighbouring Public Open Space with Public Open Space for environmental use. Lighting and uses should be sympathetic to flora and fauna management of the reserve. These works will also support the Environmental Park Street which will run to the south of the site.
Tree Coverage	✓	Achieve 30% Tree Canopy Cover.
Reduction of Turf	✓	Remove turf from boundary areas and replace with locally native garden beds.
Reduce Water Use	✓	Integrate Smart Irrigation Technology
Heritage Value	✗	
Play	✗	
Active Transport	✓	Inclusion of infrastructure such as safe bike locks, lighting, water fountains and shelter.
Wayfinding	✗	
Dog Walking	✓	Monitor ongoing use as a formal dog park for potential clashes with sporting use.
Community Ownership	✗	
Events	✗	
Safety	✗	
Supporting Local Economy	✗	



CURTIN UNIVERSITY & BENTLEY

POS	Kent Street Verge	
Size	3Ha	
Hierarchy/Function/Setting	Neighbourhood/ Passive / Traditional	
Approach 3: Improve Quality to Existing POS		
Recommendation		Comment
This land is effectively road verge to a key feeder road, it is not feasible to utilise for recreational purpose. As such it is recommended that it is completely revegetated.		
Public Open Space for sporting use	✗	
Public Open Space for environmental use	✗	
Tree Coverage	✓	Achieve 100% Tree Canopy Cover.
Reduction of Turf	✓	Remove turf, replace with endemic species and shade trees.
Reduce Water Use	✗	
Heritage Value	✗	
Play	✗	
Active Transport	✗	
Wayfinding	✓	Implement art/signage as wayfinding given prominent location.
Dog Walking	✗	
Community Ownership	✗	
Events	✗	
Safety	✗	
Supporting Local Economy	✗	



WELSHPOOL

WELSHPOOL

POS	Forward Reserve	
Size	0.48Ha	
Hierarchy/Function/Setting	Local/ Passive / Traditional	
Approach 3: Improve Quality to Existing POS		
Recommendation		Comment
Public Open Space for sporting use	✗	
Public Open Space for environmental use	✗	
Tree Coverage	✓	Achieve 30% Tree Canopy Cover.
Reduction of Turf	✓	Consolidate turf into single usable space and remove turf from under trees and in non-active areas, replace with native vegetation.
Reduce Water Use	✗	
Heritage Value	✗	
Play	✓	Seating nodes and adult recreational facilities, such as table tennis or outdoor gym to support use of space by workers of adjoining industrial area.
Active Transport	✓	Inclusion of infrastructure (safe bike locks, lighting, water fountains and shelter.
Wayfinding	✗	
Dog Walking	✓	Provide a formal dog park exercise area due to lack of conflicting park uses.
Community Ownership	✓	Implement community engagement program to encourage ongoing ownership of park, development of park infrastructure and to improve social and mental health of nearby residents.
Events	✗	
Safety	✗	
Supporting Local Economy	✗	

