



# LATHLAIN PARK ZONE 1

LATHLAIN PARK ADVISORY GROUP PRESENTATION

APRIL 2023



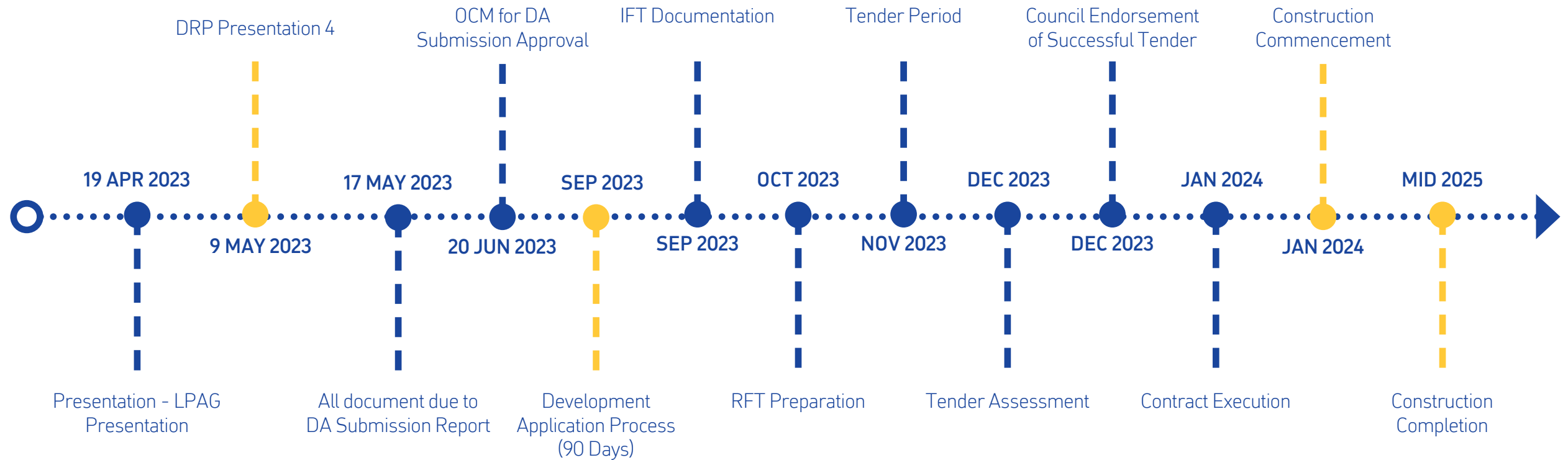




# AGENDA

- Timeline
- Project Updates Since Last LPAG
- Plans, Sections and Perspectives etc
- TVP Community Space
- Internal Views - Including Lobby Redesign
- Sun Study
- Materials and Finishes
- Percent for Art
- Sustainability

# TIMELINE



# SINCE LAST LPAG MEETING

- Presented to Perth Football Club Board
- Presented to the Town of Victoria Park Design Review Panel
- Presented to the Town of Victoria Park Concept Forum
- Meeting with Perth Football Club Project Team
- Meeting with Western Australian Football Commission on AFL Guidelines and confirmation of AFL, AFLW and WAFL requirements
- Integration of Services and Structural Design including Acoustic Report
- Incorporation of comments raised in all presentations and meetings





# UPDATES TO THE DESIGN HAVE INCLUDED

## OVAL LEVEL

- Property Store and Laundry
- Circulation amended with relocation of lifts and stairs
- Staff Amenities and Lockers Revised
- Redistribution of Storage, Dr/Physio/Drug Testing Room and PFC Archive
- Addition of Sensory/ Prayer Room
- Integration of Structure, Services Information



# UPDATES TO THE DESIGN HAVE INCLUDED

## **GODDARD STREET LEVEL**

- Lobby made smaller with reconsideration of Game Day/Non Game Day use
- Confirmed and Revised Toilets with the inclusion of a Parents and Babies Room
- Added the Kitchenette and Server to Community Space
- Revised the Entry to both Function Rooms
- Consideration around potential uses of the Community Space
- Integration of Structure, Services Information





# UPDATES TO THE DESIGN HAVE INCLUDED

## UPPER LEVEL

- Reconfigured Office, Kitchen and Glazing
- Reconfigured Coaches Boxes, Media, Radio etc
- Integration of Structure, Services Information

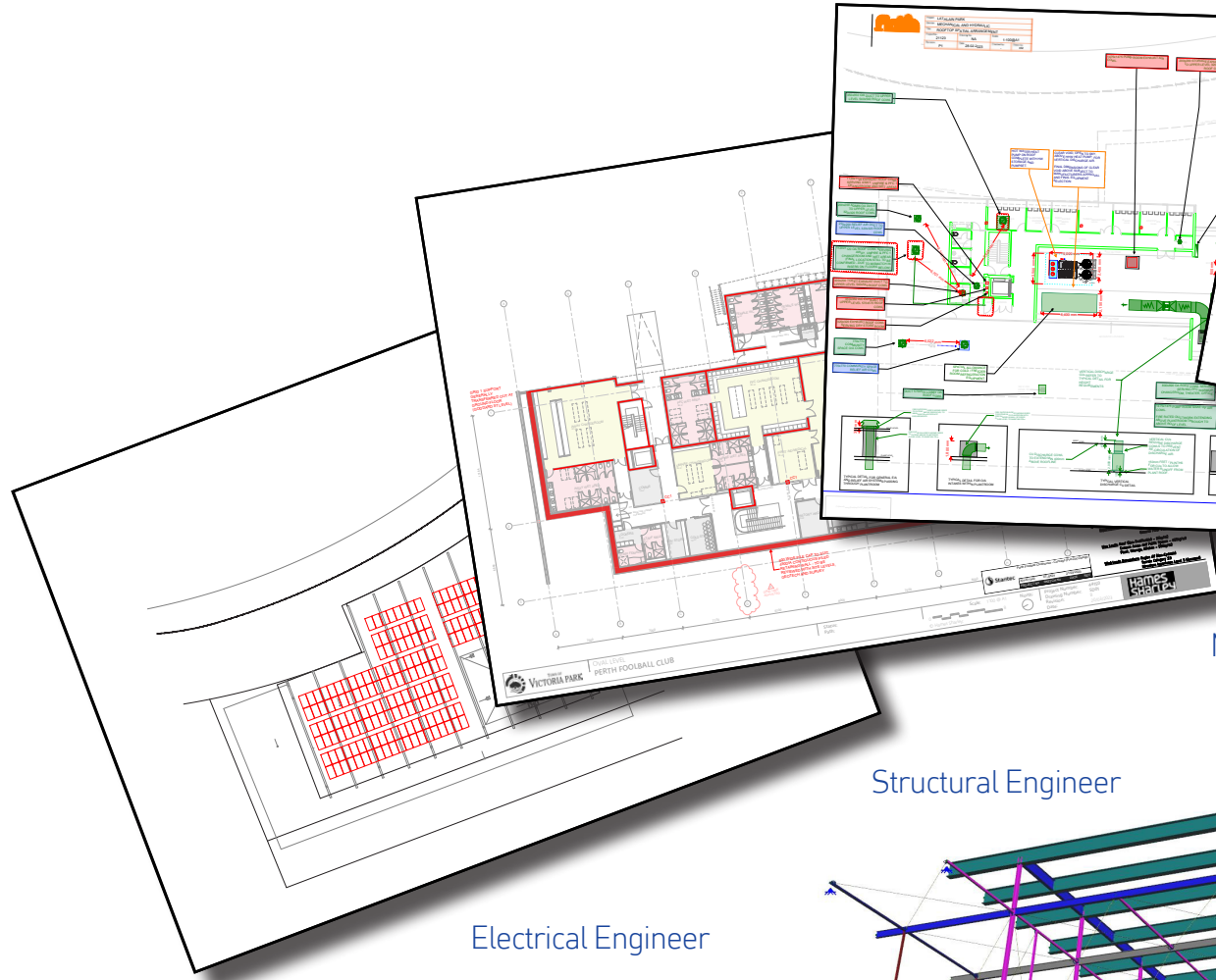


# CURRENTLY BEING UPDATED

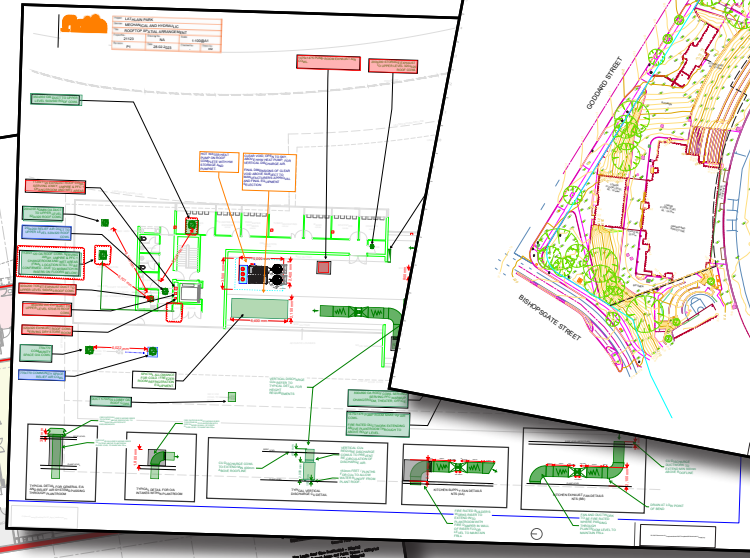
- Landscaping Design including Drop Off and Parking Spaces
- Ambulance/Property Store Vehicle Access
- Seating and Redistribution of Oval Level Toilets
- OB Compound Requirements (Awaiting comments from WAFC)
- Patron Entrance at Southern End of Building (Awaiting comments from WAFC)
- Roof Extent to the Southern End of Building
- Camera Compound (Awaiting comments from WAFC)



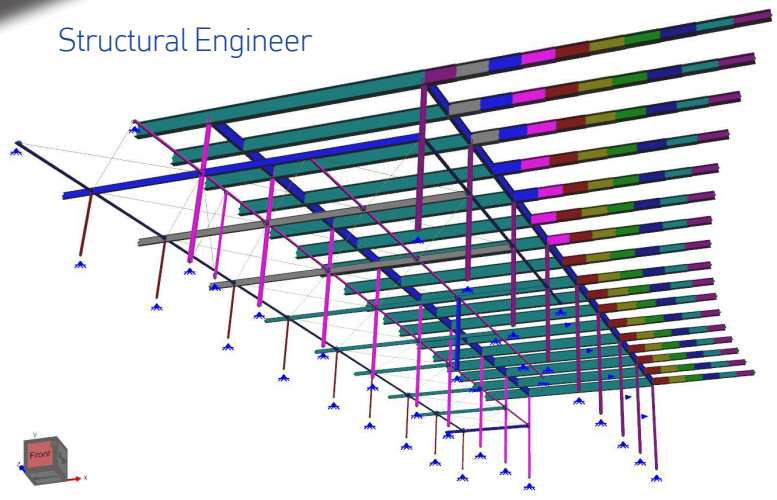
# PROCESS



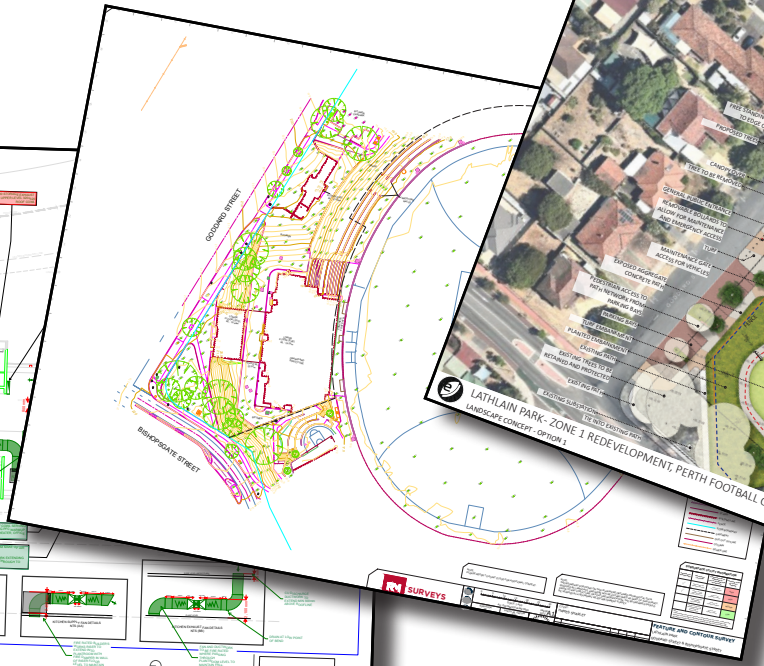
Electrical Engineer



Mechanical Engineer



Structural Engineer



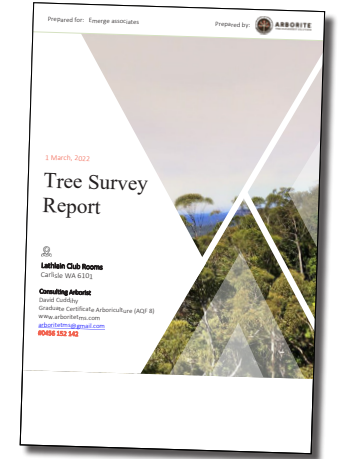
Surveyor



Landscape Architect



Acoustic Report

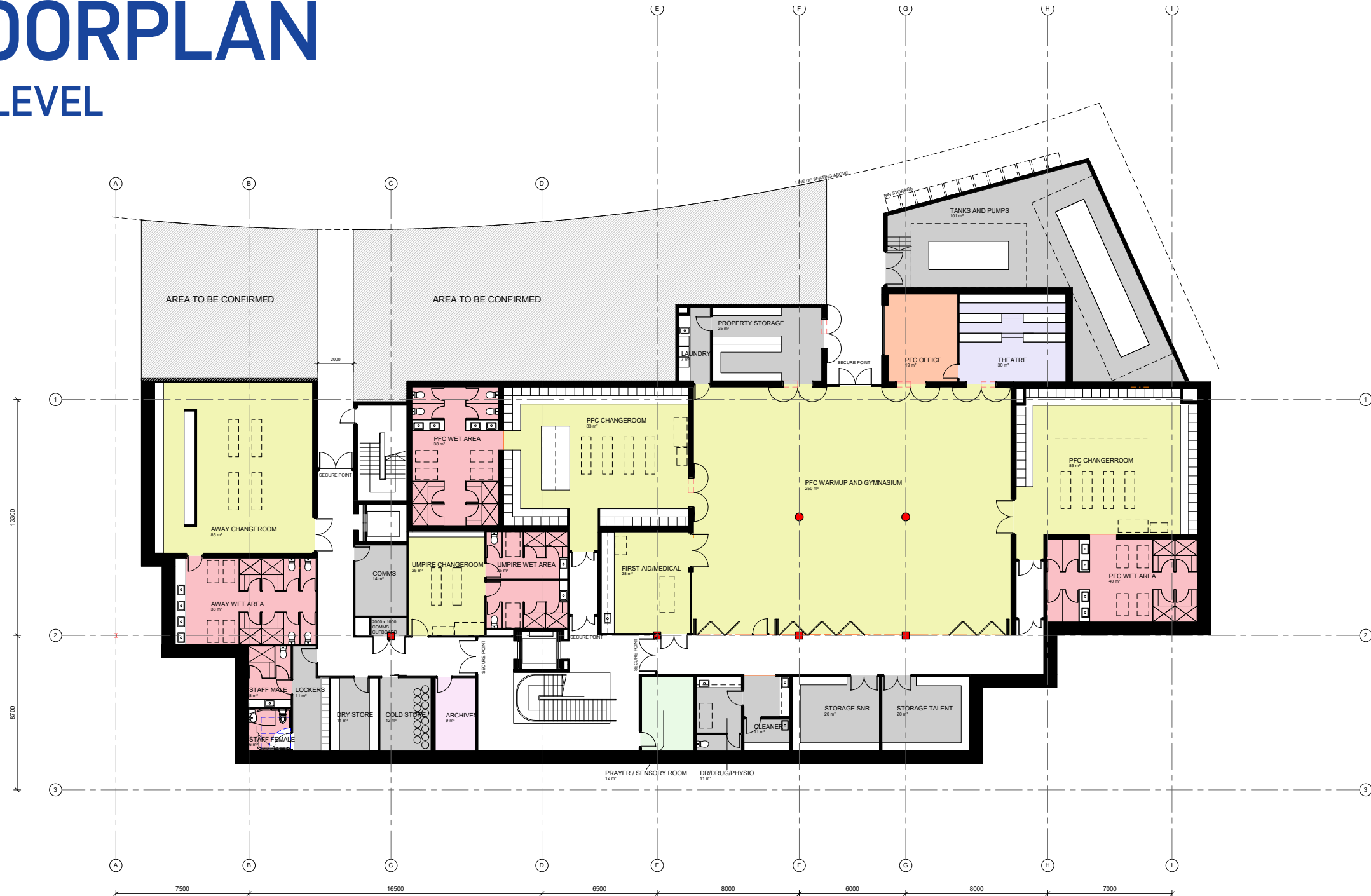


Arborist Report



# FLOORPLAN

## OVAL LEVEL

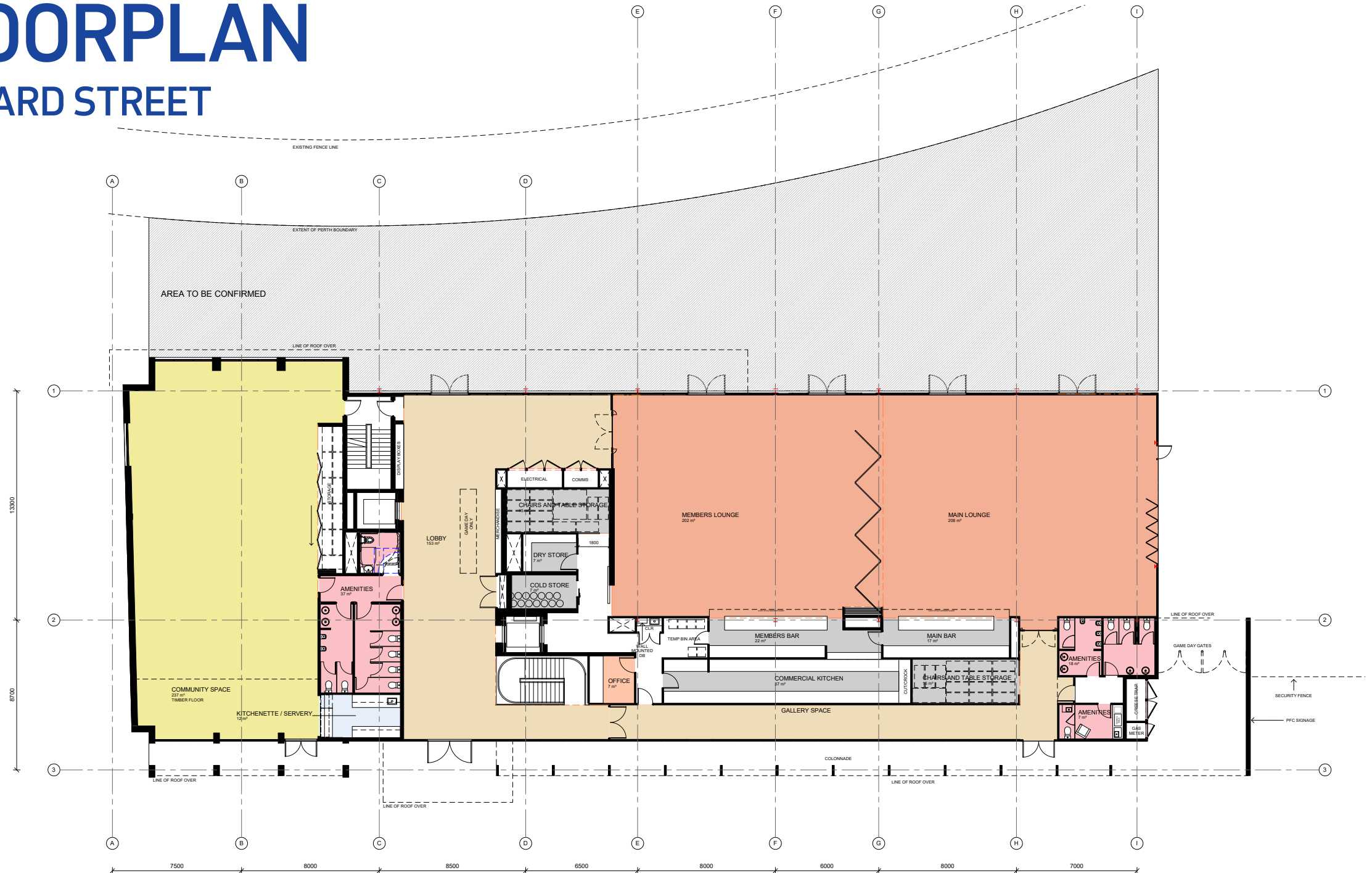






# FLOORPLAN

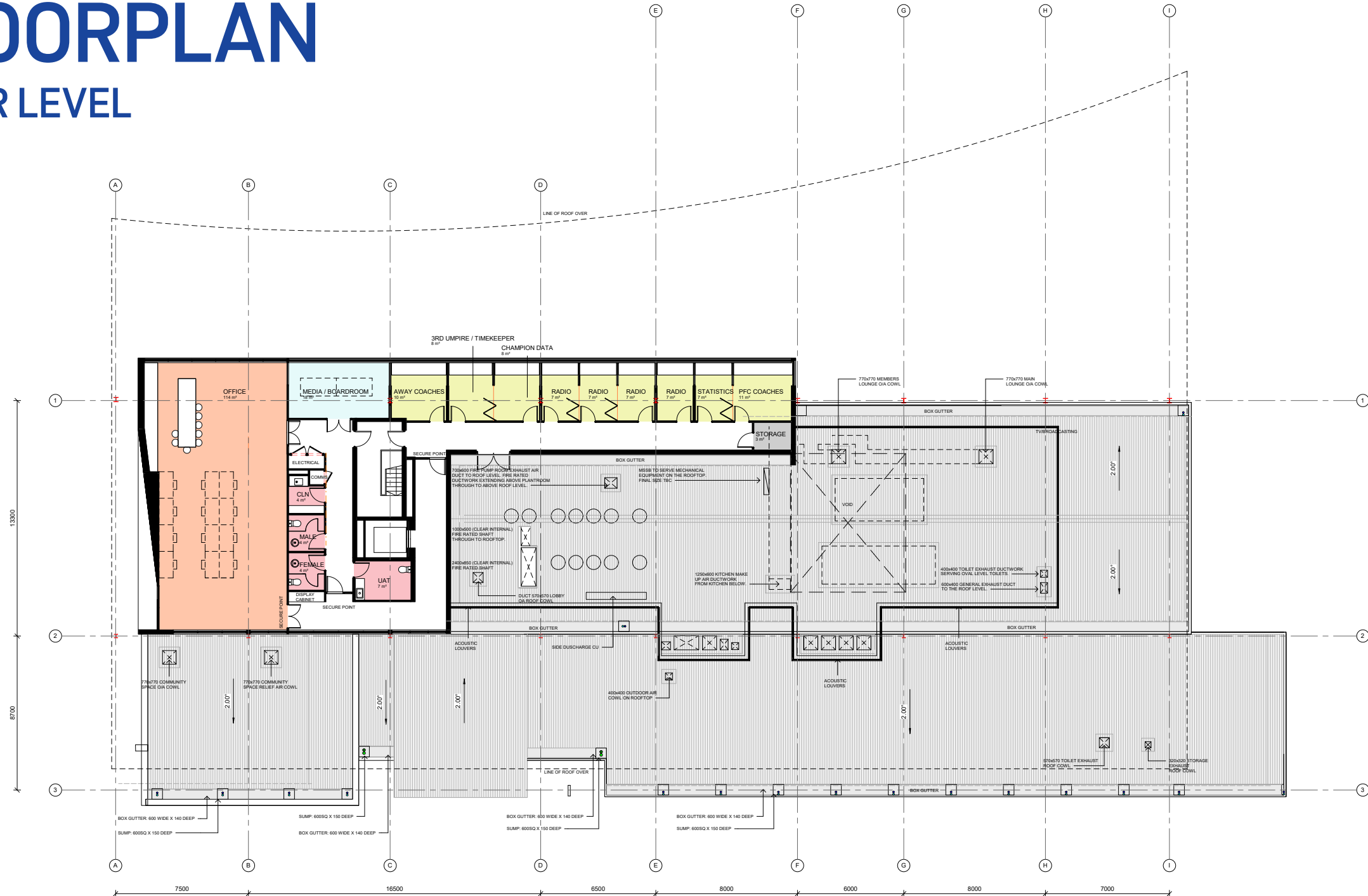
## GODDARD STREET



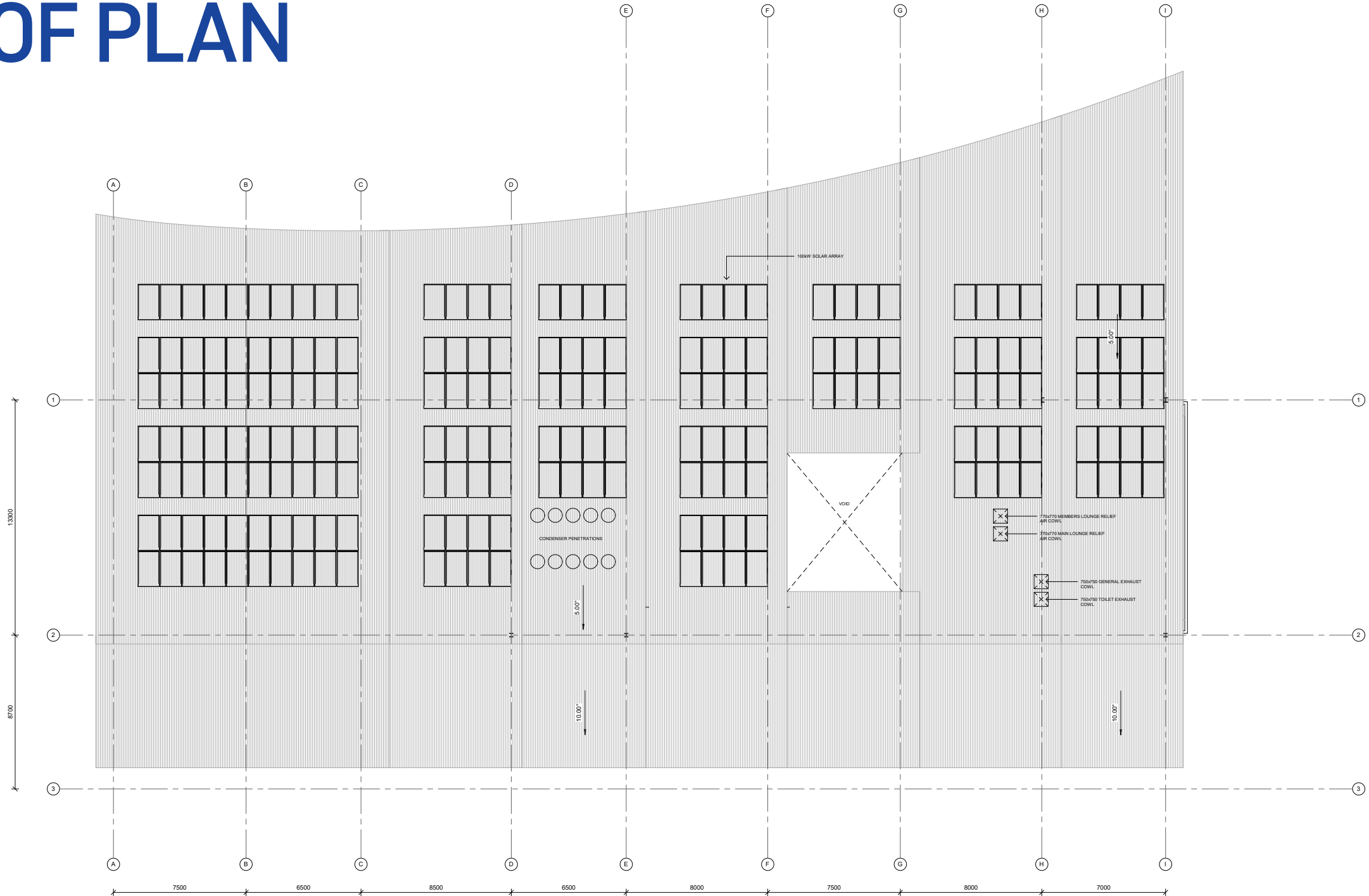


# FLOORPLAN

## UPPER LEVEL



# ROOF PLAN

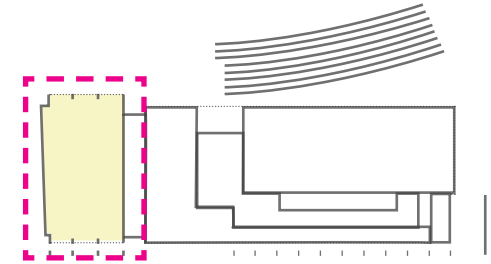




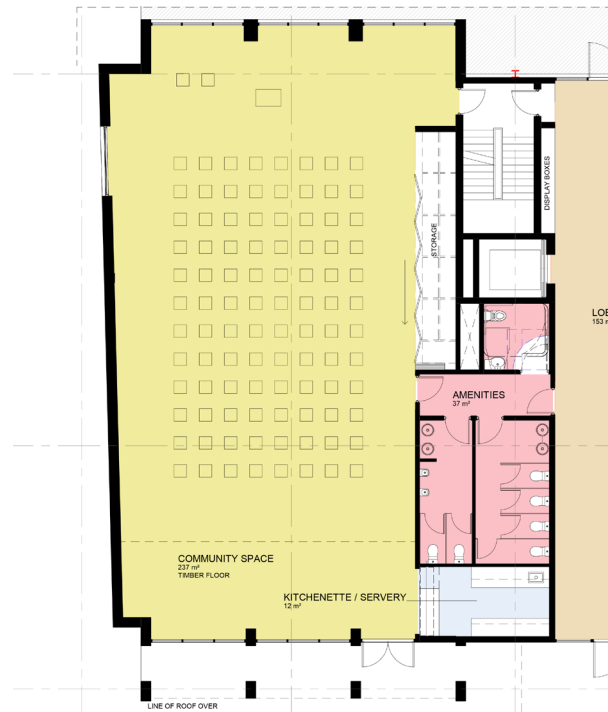
# COMMUNITY SPACE POTENTIAL USES

## DESIGN BRIEF

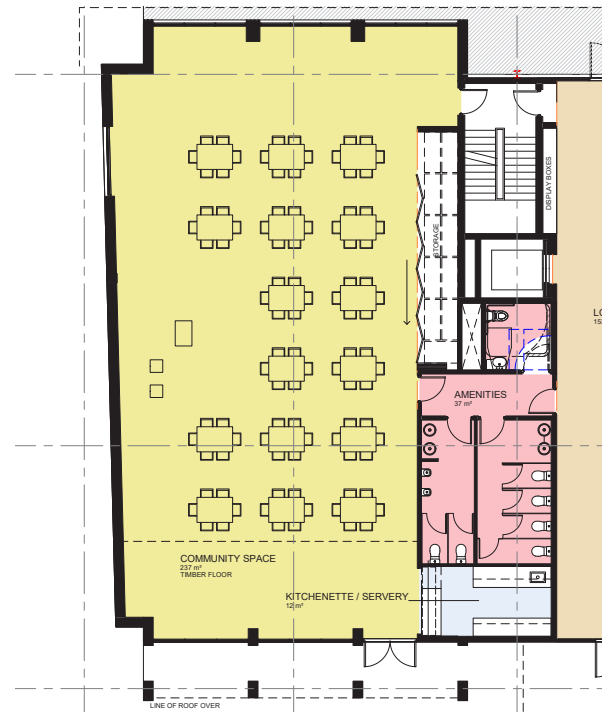
- 1) Seminar / presentation of 100 people
- 2) Community engagement workshop with desks etc
- 3) Community group function (end of season junior sporting event, fundraising event eg quiz night, etc)
- 4) Health classes eg yoga or dancing large classes (full space)



KEY PLAN



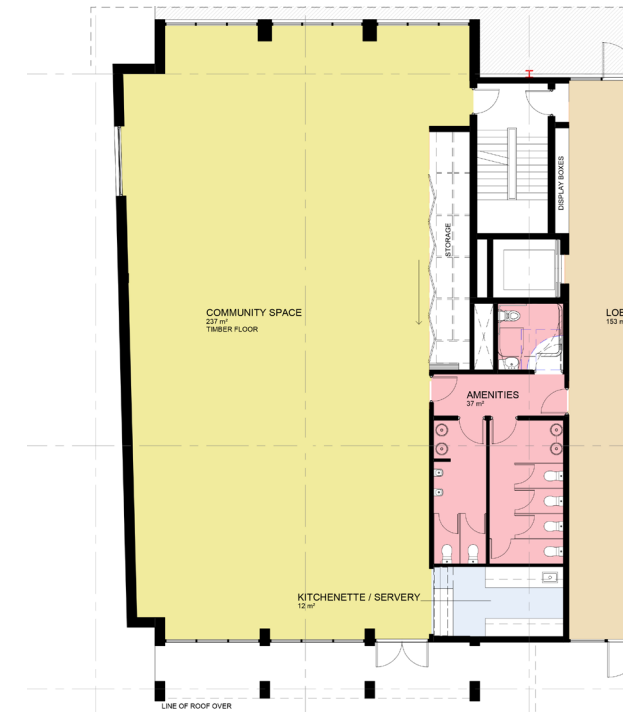
Option 1



Option 2



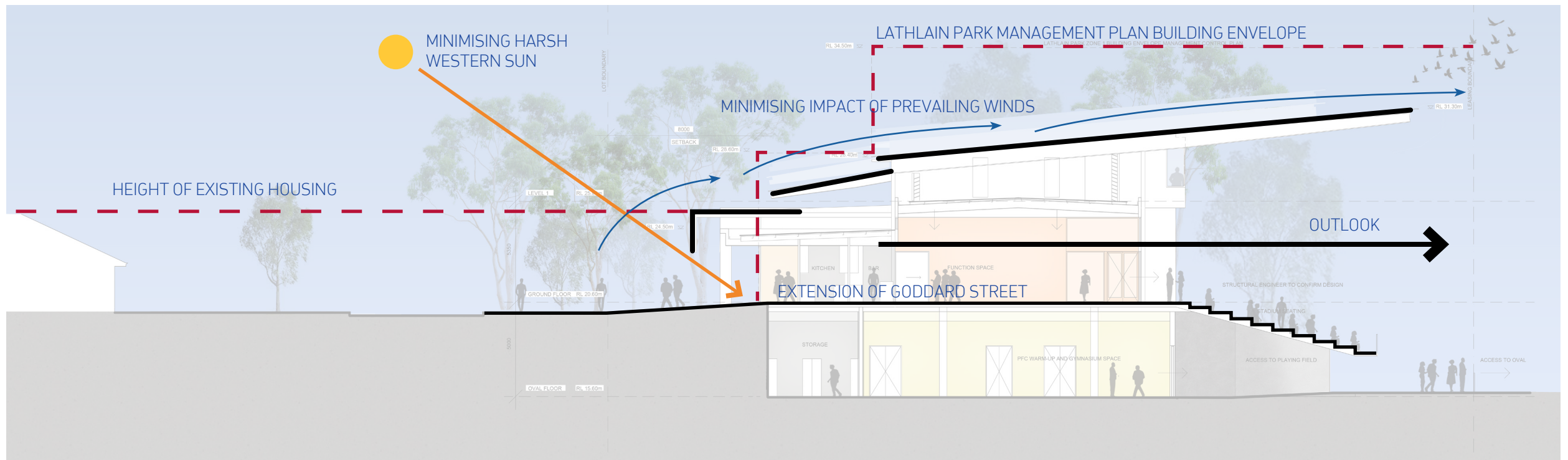
Option 3



Option 4



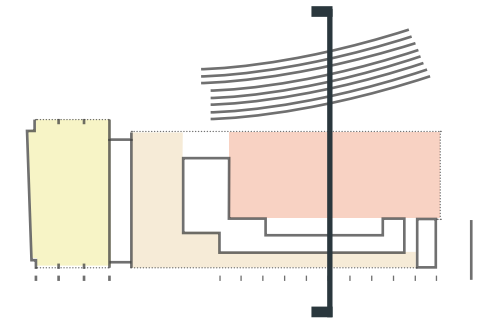
# SECTION STUDY



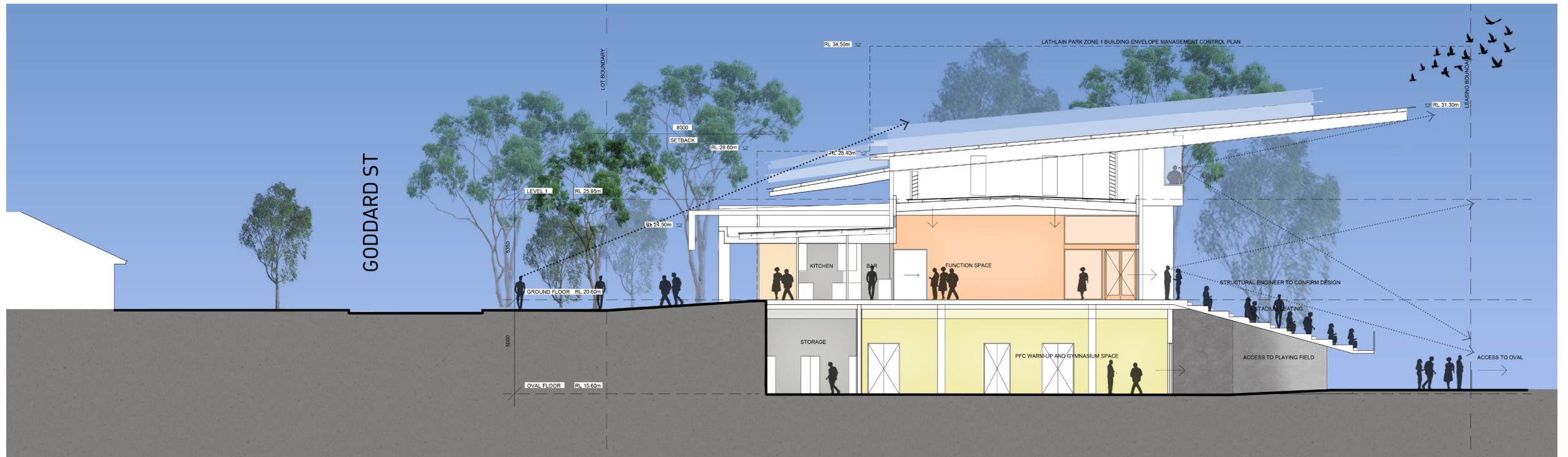


# SECTION C

## THROUGH FUNCTION ROOMS



KEY PLAN







# CONTEXT AND CHARACTER





# MATERIALS

## EXISTING MATERIALS



## PROPOSED MATERIAL PALETTE



WHITE PAINTED STEELWORK



LIGHT SEALED CONCRETE



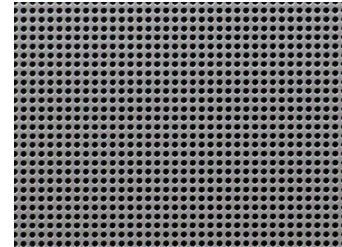
DARK SEALED CONCRETE



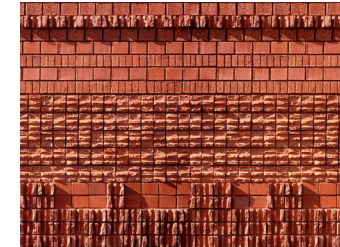
DARK BRUSHED SHEET METAL



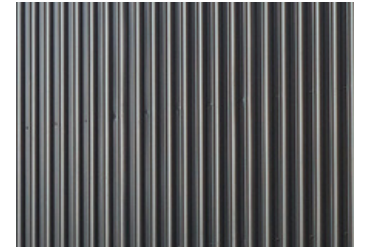
BLACK LOUVRES



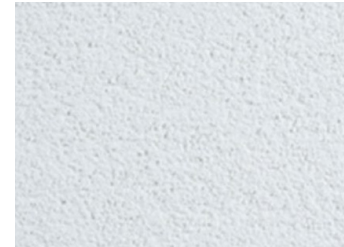
PERFORATED METAL SHEETING



BRICKS WITH PATTERN TEXTURE



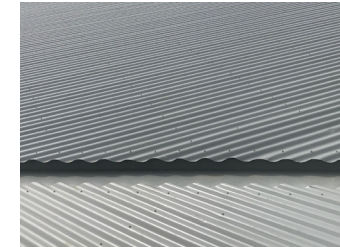
DARK METAL CLADDING



WHITE RENDER



TERRACOTTA PAINT FINISH



LIGHT AND DARK ROOF SHEETING



WHITE LOUVRES



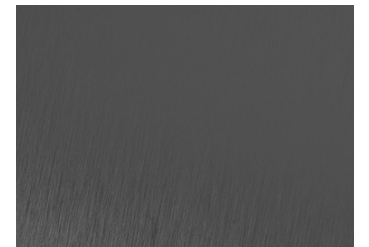
GLAZING



METAL CLADDING - EXPOSED JOINTS



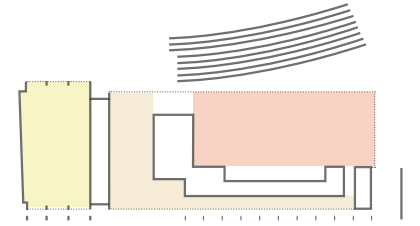
GALVANISED SHEET METAL



DARK ANODISED WINDOW FRAMES



# PERSPECTIVES



Community Space Entry

Media Bays

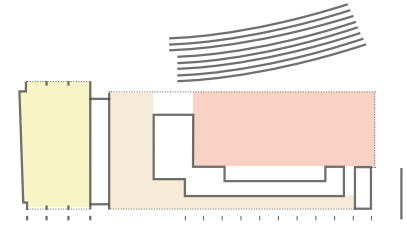
Perth Football Club Entry

Club Parking Bays

Game Day Entry



# PERSPECTIVES



Solar Panels

Perth Football Club Entry

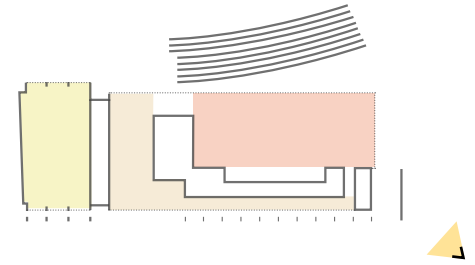
Club Parking Bays

Game Day Entry

External Spectator Area



# PERSPECTIVES



Club Parking Bays

Game Day Entry

Potential Signage Opportunity

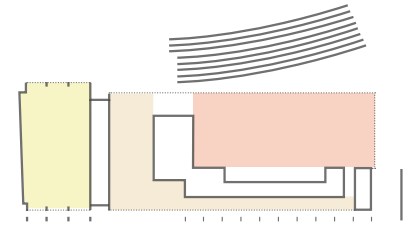
Access To Function Space

Security Fence

External Spectator Area



# PERSPECTIVES



Community  
Space Entry

Media Bays  
Potential Public  
Art Location

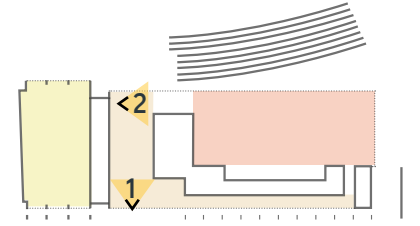
Perth Football Club Entry

Gallery Space





# INDICATIVE PERSPECTIVES



FOYER SPACE (1)



FOYER SPACE (1)

- 1) Merchandise Area,
- 2) Display Boxes,
- 3) Reception Desk
- 4) Check-in Kiosk
- 5) Lift Access

FOYER SPACE (2)



FOYER SPACE (2)

- 1) View to Oval and WCE Building beyond
- 2) Access to seating
- 3) Access to function rooms



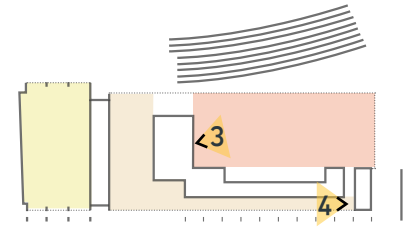
# INDICATIVE PERSPECTIVES

FUNCTION ROOMS (3)



FUNCTION ROOMS (3)

- 1) Access to Southern Landscaping,
- 2) Transom for potential fixing of projector screen
- 3) Floor Boxes for connection for temporary TV / Sound Equipment
- 4) Tilt Doors to close down bar areas when in use



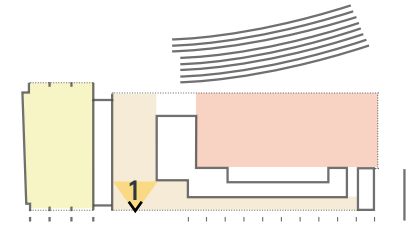
GALLERY SPACE (4)



GALLERY SPACE (4)

- 1) Hanging Space.
- 2) View to Goddard street
- 3) Direct Access to Function Room and Foyer

# LOBBY CONFIGURATION



## GAME DAY



- 1) Cabinetry opens to sell merchandise
- 2) Temporary tables brought in to sell merchandise

## NON-GAME DAY



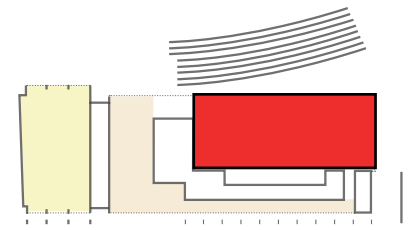
- 1) Cabinetry doors closed
- 2) Tables removed
- 3) iPad consoles fixed to wall for check in





# INTERNAL SUN STUDY

## FUNCTION SPACE



21ST MARCH EQUINOX SUNRISE 7am



21ST JUNE WINTER SOLSTICE SUNRISE 8am



21ST MARCH EQUINOX 9am



21ST JUNE WINTER SOLSTICE 9.30am

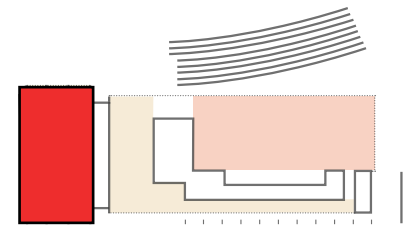






# INTERNAL SUN STUDY

## TVP COMMUNITY SPACE



21ST MARCH EQUINOX SUNRISE 7am



21ST JUNE WINTER SOLSTICE SUNRISE 8am



21ST MARCH EQUINOX 10am

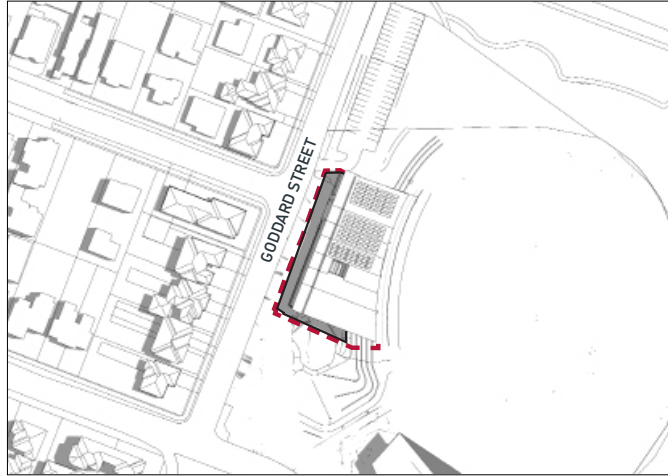


21ST JUNE WINTER SOLSTICE 10am

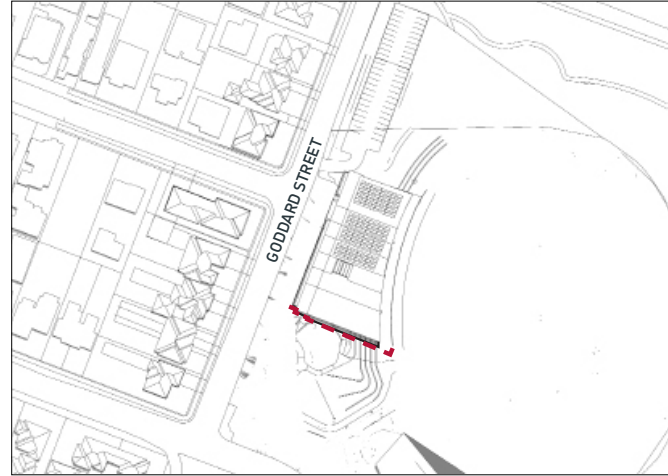




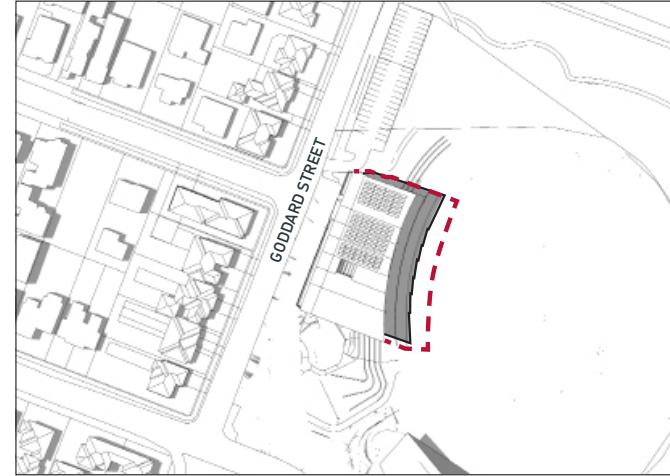
# OVERSHADOWING



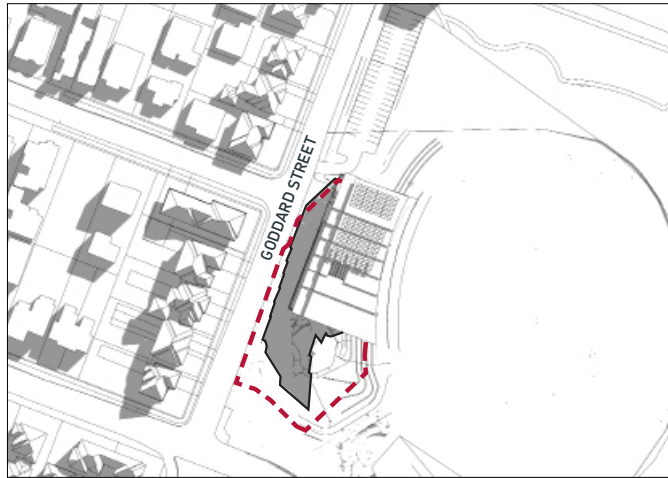
9AM SUMMER



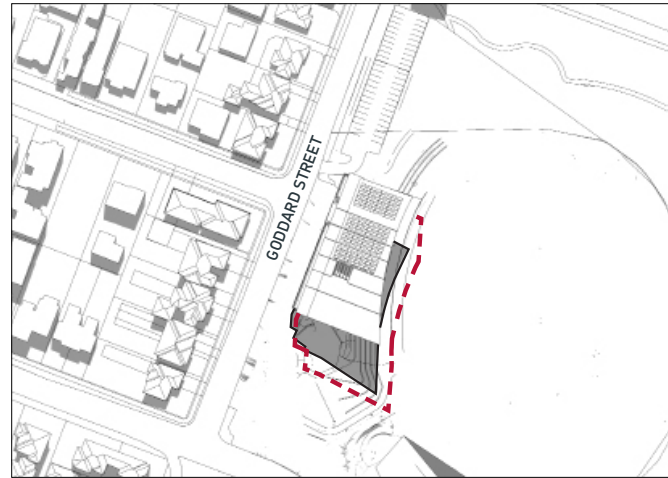
MIDDAY SUMMER



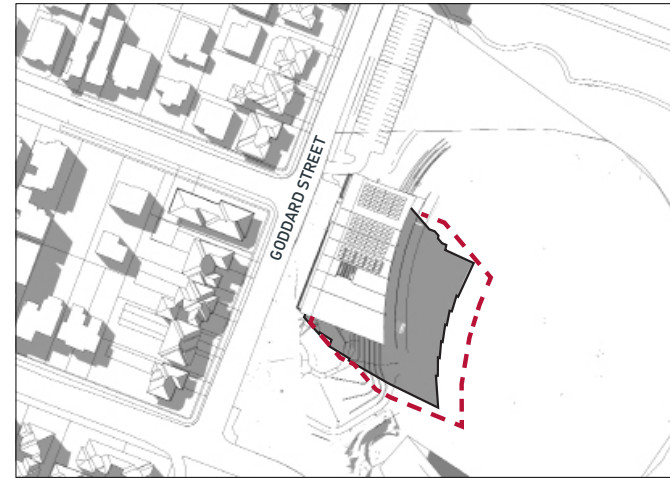
3PM SUMMER



9AM WINTER



MIDDAY WINTER



3PM WINTER



## LEGEND

— PERMISSIBLE BUILDING ENVELOPE

- - - PROPOSED BUILDING ENVELOPE



# PUBLIC ART STRATEGY

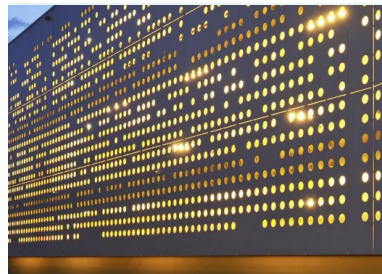
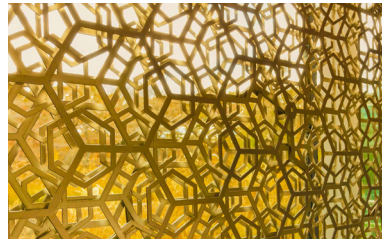
This project will be provided Public Art in line with the requirements of the Town of Victoria Park Public Art Strategy.

There are potentially two commissions of Public Art that may occur for this project. As yet no brief has been provided by the Town of Victoria Park however the opposite indicates potential opportunities this project provides.

The first Public Art commission may be provided as an integrated art screen located on the building and fronting Goddard Street as indicated on the perspectives opposite. This location is the most public and easily identifiable location with visual sightline from the Corner of Bishops Gate and Goddard Street and at the culmination of Staines Street and Goddard Street. No clear theme has been set for the Public Art. An artist will be selected by the Town of Victoria Park prior to issuing of the Builders License.

The second Public Art commission may be engraved into the paving directly outside the entry to the building on Goddard Street with the public art extending along the footpath. This location is the most public and easily identifiable location with visual sightline from the Corner of Bishops Gate and Goddard Street and at the culmination of Staines Street and Goddard Street. No clear theme has been set for the Public Art however this commission may be able to tell stories of the area along with significant events which may have occurred throughout the development of Lathlain Park area. An artist will be selected by the Town of Victoria Park prior to issuing of the Builders License.

The Perth Football Club Board have indicated an interest in being a part of the Public Art process.



Potential Public Art Location

Potential Public Art Location



Potential Public Art Location

# SUSTAINABILITY

The Green Star Positive Category consists of 4 credits with 'minimum expectations' of which the criteria are listed below:

- Credit 21 Upfront Carbon Emissions: The building's upfront carbon emissions are at least 10% less than those of a reference building.
- Credit 22 Energy Use: The building's energy use is at least 10% less than a reference building.
- Credit 23 Energy Source: The building provides a Zero Carbon Action Plan (A narrative describing a timeline and upgrade pathway for the building to operate as fossil fuel free)
- Credit 25 Water Use: The building installs efficient water fixtures (WELS ratings of 5 stars for taps, urinals and dishwashers; 4 stars for toilets and clothes washing machines; and 3 stars for showers)



Together let's enable  
communities to flourish.

↗ Learn more at  
[www.hamessharley.com.au](http://www.hamessharley.com.au)

