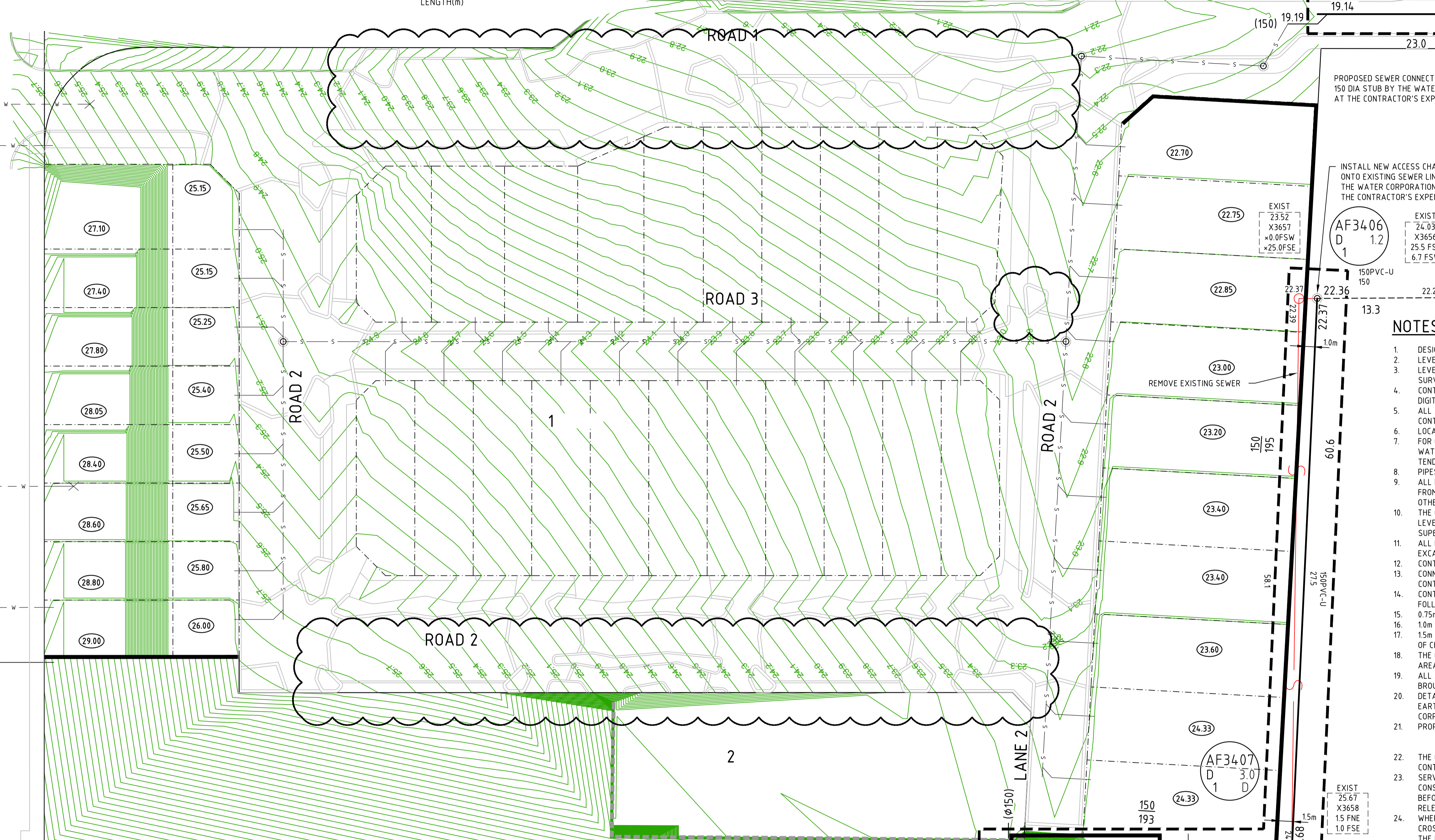


LEGEND

- PROPOSED SEWER
- PROPOSED INTERNAL SEWER
- EXISTING SEWERS
- LIMIT OF WORKS BOUNDARY
- PROPOSED RETAINING WALL
- EXISTING RETAINING WALL
- PROPOSED DESIGN CONTOUR (0.1m INTERVAL)
- EXISTING SURFACE CONTOUR (0.25m INTERVAL)
- PROPOSED DRAINAGE
- EXISTING WATER
- FINISHED FLOOR LEVEL (FFL)

LEGEND CONT.

- DIL 22.98
- SIL 22.61
- CL 0.20
- AA6680
- EXIST AA6680
- PIPE DIA - CLASS
- GRADE
- LL
- LENGTH(m)
- PROPOSED SEWERS WITH NOTATION.
- DRAINAGE INVERT LEVEL (DIL)
- SEWER INVERT LEVEL (SIL)
- CLEARANCE BETWEEN PIPES (CL)
- ACCESS CHAMBERS AS ABOVE WITH GATIC TYPE COVER.
- CLASS OF COVER, ACCESS CHAMBER DEPTH
- ACCESS CHAMBER TYPE, D = DROP.
- EXISTING ACCESS CHAMBER
- ACCESS CHAMBER NUMBER.



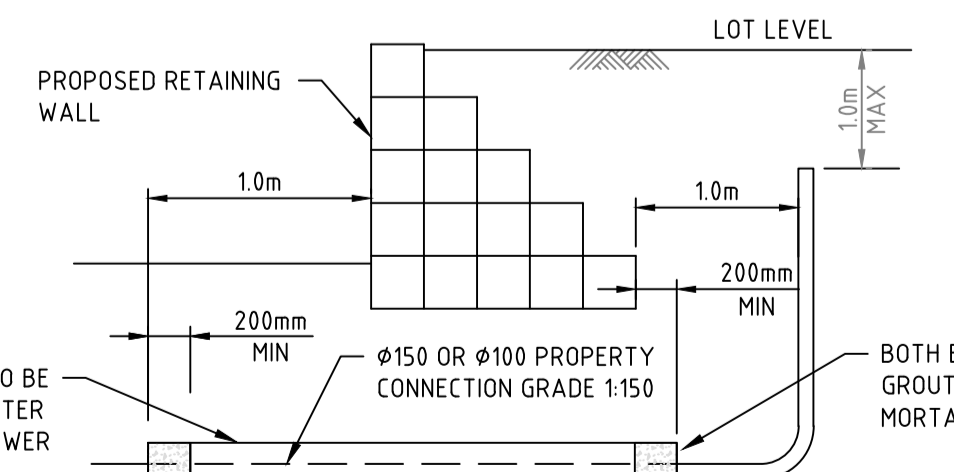
PROPOSED SEWER CONNECTION TO EXISTING 150 DIA STUB BY THE WATER CORPORATION AT THE CONTRACTOR'S EXPENSE.

INSTALL NEW ACCESS CHAMBER ONTO EXISTING SEWER LINE BY THE WATER CORPORATION AT THE CONTRACTOR'S EXPENSE.

INSTALL TEMPORARY PLUG TO ISOLATE EXISTING LIVE SEWER.

NOTES

1. DESIGN CONTOUR INTERVAL IS 0.10m
2. LEVELS ARE REDUCED FROM A.H.D.
3. LEVEL INFORMATION HAS BEEN TAKEN FROM WATER CORPORATION BASE SHEETS AND SITE SURVEY BY TOTAL PROJECT CONSULTANTS
4. CONTRACTORS SETOUT OF SEWER RETICULATION SHALL NOT BE DONE FROM SCALING OR DIGITAL DRAWING.
5. ALL ACCESS CHAMBER DEPTHS ARE SHOWN FOR WATER CORPORATION INFORMATION ONLY. THE CONTRACTOR SHALL CONFIRM THE DEPTH OF THE ACCESS CHAMBER PRIOR TO MANUFACTURING.
6. LOCAL AUTHORITY: VICTORIA PARK
7. FOR CONSTRUCTION PURPOSES THE TENDERER SHALL MAKE HIS OWN ASSESSMENT OF GROUND WATER AND ITS LIKELY AFFECT ON THE WORKS AND MAKE ALL DUE ALLOWANCE IN THE LUMP SUM TENDER.
8. PIPES SHALL BE UPVC, CLASS SN 8 SOLVENT CEMENT JOINT, UNLESS OTHERWISE SHOWN.
9. ALL MAINS, ACCESS CHAMBERS AND INSPECTION OPENINGS SHALL BE LAID ON A 1.0m ALIGNMENT FROM BOUNDARIES WITHIN LOTS AND ON A 3.5m ALIGNMENT WITHIN ROAD RESERVES UNLESS OTHERWISE SHOWN.
10. THE CONTRACTOR SHALL VERIFY / CONFIRM THE EXISTING SEWER PIPE ALIGNMENT AND INVERT LEVELS PRIOR TO EXTENDING THE NEW SEWER MAIN. ANY DISCREPANCIES TO BE REPORTED TO THE SUPERINTENDENT IMMEDIATELY.
11. ALL EARTHWORKS SHOWN ON THE DRAWINGS SHALL BE COMPLETED PRIOR TO ANY SEWER EXCAVATION.
12. CONTRACTOR TO MAINTAIN PHYSICAL BREAK BETWEEN EXISTING AND NEW SEWER SYSTEM.
13. CONNECTION TO EXISTING MAINS SHALL BE MADE BY THE WATER CORPORATION AT THE CONTRACTOR'S EXPENSE.
14. THE CONTRACTOR SHALL NOTIFY THE SUPERINTENDENT PRIOR TO CONSTRUCTION WHEN THE FOLLOWING COVER CAN NOT BE OBTAINED:
0.75m TO TOP OF SEWER WHERE NOT SUBJECT TO VEHICULAR TRAFFIC.
1.0m IN ROAD RESERVE AND R.O.W.'S AND NOT LESS THAN 0.75m BELOW CROWN OF ROAD.
1.5m WHERE DEVIATING FROM STANDARD ALIGNMENT IN A ROAD RESERVE CONSISTING OF A SERIES OF CHORDS AND WHEN CROSSING ROAD RESERVE AT AN ANGLE BETWEEN 45 AND 90 DEGREES.
15. THE CONTRACTOR SHALL LIMIT THE MOVEMENT OF EQUIPMENT AND MANPOWER TO THE MINIMUM AREA NECESSARY AND PROTECT ALL VEGETATION ON SITE.
16. ALL JUNCTIONS SHALL BE 150mm DIA, BROUGHT IN A MINIMUM OF 0.5m INSIDE THE LOT, AND BROUGHT UP TO WITHIN 1.0m OF THE SURFACE.
17. DETAILS ON THIS DRAWING SHALL BE READ IN CONJUNCTION WITH THE COMMON TRENCH, EARTHWORKS AND ROADWORKS DRAWINGS, THE SPECIFICATION AND APPLICABLE WATER CORPORATION STANDARD DRAWINGS FOR THESE WORKS.
18. PROPOSED ACCESS CHAMBERS AND MAINTENANCE SHAFTS
ACCESS CHAMBERS - TYPE 1
MAINTENANCE SHAFT - 0
19. THE CONTRACTOR SHALL SUBMIT TO THE SUPERINTENDENT COPIES OF ISOLATION PLUGS AND CONTRACTOR'S PIPE LAYING CERTIFICATE PRIOR TO COMMENCEMENT OF WORK.
20. SERVICES SUCH AS WATER, GAS, ELECTRICITY AND DRAINAGE MAY BE ENCOUNTERED DURING CONSTRUCTION OF THE WORKS. SERVICE INFORMATION SHOWN ON DRAWINGS IS INDICATIVE ONLY. BEFORE WORKS COMMENCE THE LOCATION OF SUCH SERVICES SHALL BE OBTAINED FROM THE RELEVANT AUTHORITIES.
21. WHERE A SEWER LINE INTERSECTS WITH A STORMWATER DRAINAGE LINE AND THE SEWER CROSSEVER THE DRAIN THEN THE SEWER SHALL HAVE A TIMBER PILE AND KEEL PROVIDED FOR THE FULL EXTENT NECESSARY TO SUPPORT THE SEWER DURING EXCAVATION OF THE DRAIN.



RETAINING WALL NOTE:
HOUSE JUNCTIONS UNDER SINGLE RETAINING WALLS TO BE ENCASED IN PIPE SLEEVE AND EXTENDED 15m INTO THE LOT.
NOTE:
WHERE RETAINING WALL >1.0m HIGH, ONE PILE 300mm BELOW INVERT OF JUNCTION IS TO BE PROVIDED EITHER SIDE OF JUNCTION.

CONTRACTOR IS TO BORE NEW CONNECTION THROUGH EXISTING RETAINING WALL AND REPAIR AS DIRECTED

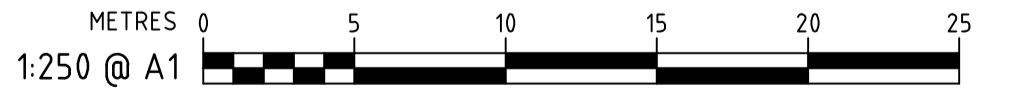
REMOVE REDUNDANT PIPEWORK AND REPLACE EXISTING ACCESS CHAMBER TO SUIT NEW DESIGN LEVELS SHOWN AT THE CONTRACTOR'S EXPENSE.

PROVIDE NEW INLET STUB AT INVERT LEVEL 22.69 FOR FUTURE CONNECTION TO LOT 4.

WARNING
BWARE OF UNDERGROUND SERVICES
The location of underground cables are approximate only and their exact position should be checked on site. No guarantee is given that all existing cables and services are shown. Locate all underground cables and services before commencement of work. Refer to Worksafe Regulation 3.21.

DIAL 1100 BEFORE YOU DIG

ISSUED FOR CONSTRUCTION



THIS PLAN IS ACCEPTED AS COMPLYING WITH OVERALL SCHEME PLANNING.
COMPLIANCE WITH RELEVANT DESIGN STANDARDS AND MANUALS REMAINS THE RESPONSIBILITY OF THE DESIGN ENGINEER.
NO WORKS ARE TO COMMENCE ON SITE UNTIL START-UP MEETING REQUIREMENTS HAVE BEEN MADE WITH THE RELEVANT ASSET INSPECTOR. REFER DEVELOPER'S MANUAL FOR CONTACT DETAILS.
FOR: MANAGER LAND SERVICING

NN19-203-001-01A

REV No.	DATE	DRAFTING CHECK	DESIGN REVIEW	REV'D P.MGR	APP'D P.DIR	AMENDMENT
4	24.08.21	JB	GA	GA	GA	CARBAYS & KERBING AMENDED
3	17.08.21	JB	GA	GA	GA	CARBAYS & KERBING AMENDED
2	09.08.21	JB	GA	GA	GA	CARBAYS AMENDED
1	24.06.21	JB	GA	GA	GA	WALLS AMENDED
0	01.06.21	JB	GA	GA	GA	ISSUED FOR CONSTRUCTION

REV No.	DATE	DRAFTING CHECK	DESIGN REVIEW	REV'D P.MGR	APP'D P.DIR	AMENDMENT

Serling Consulting (Australia) Pty Ltd
 12 QUEENSLIFF COURT
 KALLAROO WA 6025
 Telephone 0421 617 518
 office@serling.com.au

SERLING CONSULTING
 INNOVATIVE ENGINEERING SOLUTIONS

The concepts and information contained in this document are the copyright of Serling Consulting (Australia) Pty. Ltd. Use or copying of the document in whole or in part without the written permission of Serling Consulting (Australia) Pty. Ltd. constitutes an infringement of copyright.

CLIENT			
BERWICK EVP PTY LTD			
PROJECT			
384 BERWICK STREET, EAST VICTORIA PARK			
DRAFTER	DRAFTING CHECK	REVIEWED PROJECT MANAGER	APPROVED PROJECT DIRECTOR
J. BARRAM	G. ALEXANDER		
DESIGNED	DESIGN REVIEW		
J. BARRAM	G. ALEXANDER		

TITLE				
WASTEWATER RETICULATION PLAN				
SHEET	DATUM	WAPC No.	PROJECT No.	DRAWING No.
		159500	SC00213.100	C201
SCALE				REVISION
1:250				4