



B2SQUARED

Generation 2 Guide
Victoria Park WA

Written by: Jules Kabore
Ph: 0419523904
jules.r.kabore@gmail.com
IUNOX.com

About Us

Established in early 2020, IUNOX is an emerging Melbourne-based design firm specialising in human and product centered design. IUNOX strives to better the world through highly personalised and thoughtful design, as well as a deep connection with our clients.

Quick Information

The current stage of the project we are in is the prototype / development stage. The unit we will send out will not be commercially ready at this stage. As we develop this project with you, information in this document is likely to change as you customise your solution. This project is intended to be a test for both of us. We want you to find out if its a good solution for your community with an initial small investment while we're developing and learning from the project to produce a better final outcome.

Expected delivery dates: Mid November with install expected in during Late November.
Expected Cost per unit will be around \$2200 per unit.

Document contents

This document contains a brief guide of the costs, timeframe, and considerations related to installing a B2Squared Generation 2 unit at Koolbardi Park Carlisle WA.

Problem

As late night noise generates complaints from local communities, the B2 Squared prototype hopes to solve the issue by preventing use beyond the allocated times. This unit hopes to be installed and tested over a short and long period whilst observing the reactions and opinions of the local communities.

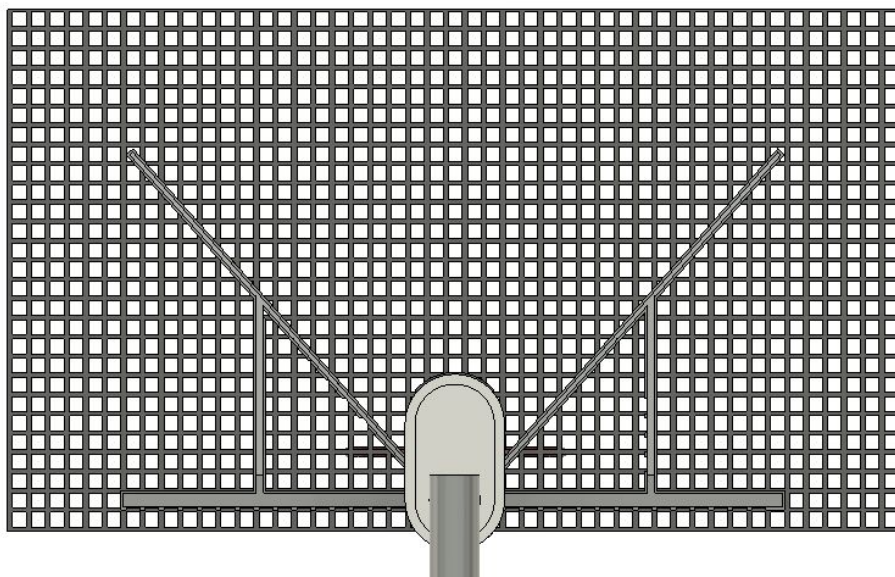
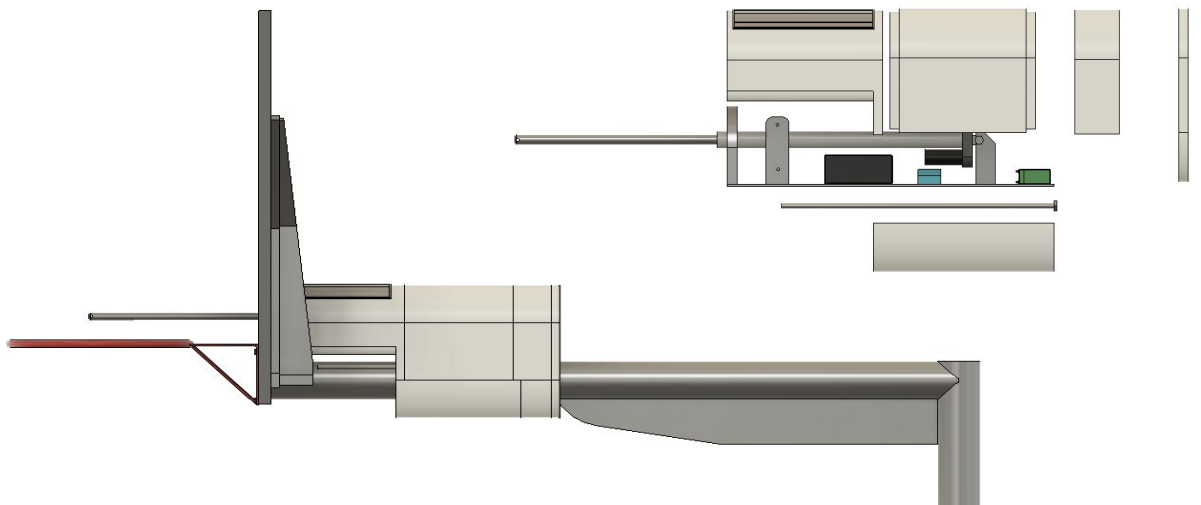


B2SQUARED

Generation 2 Proposal
Victoria Park WA

Solution

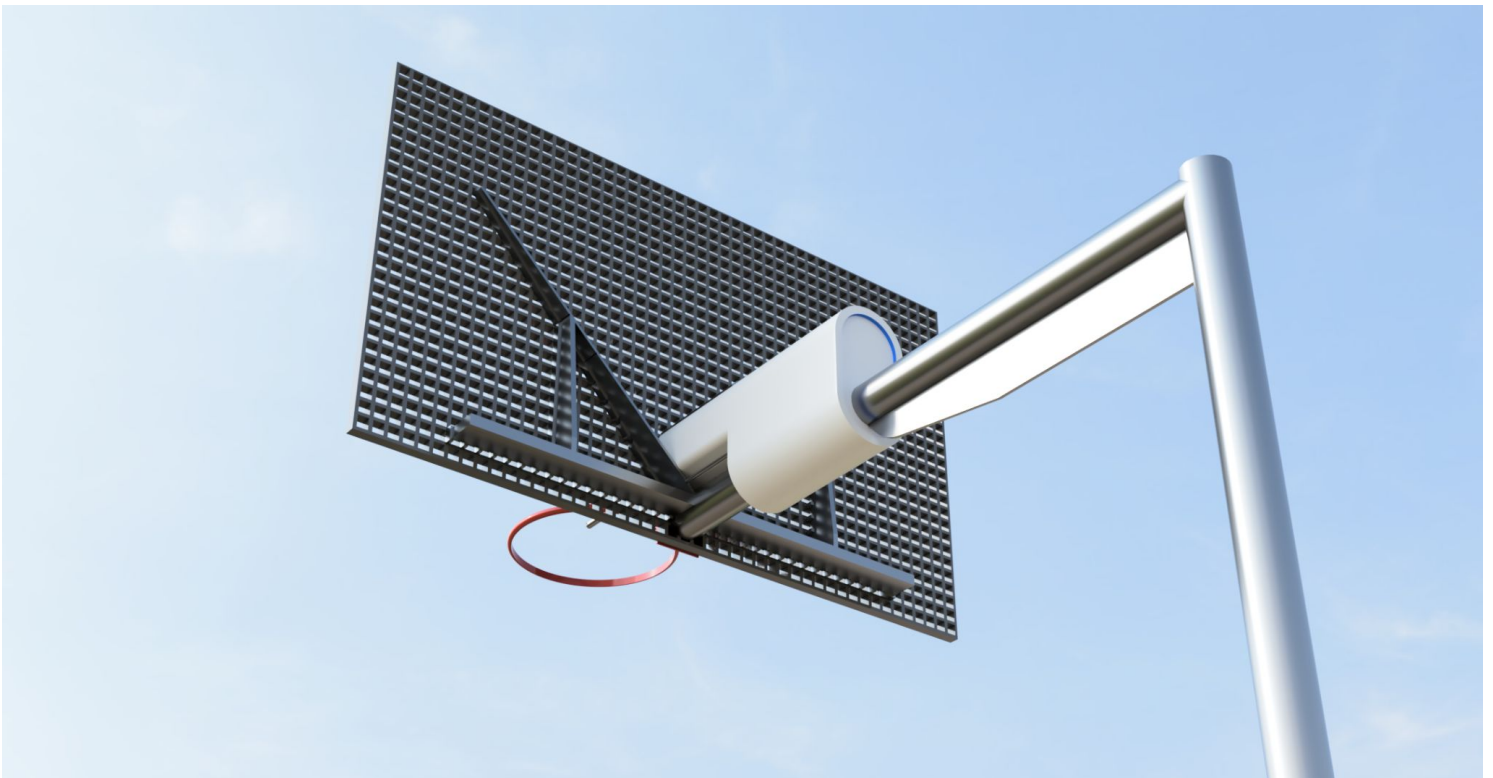
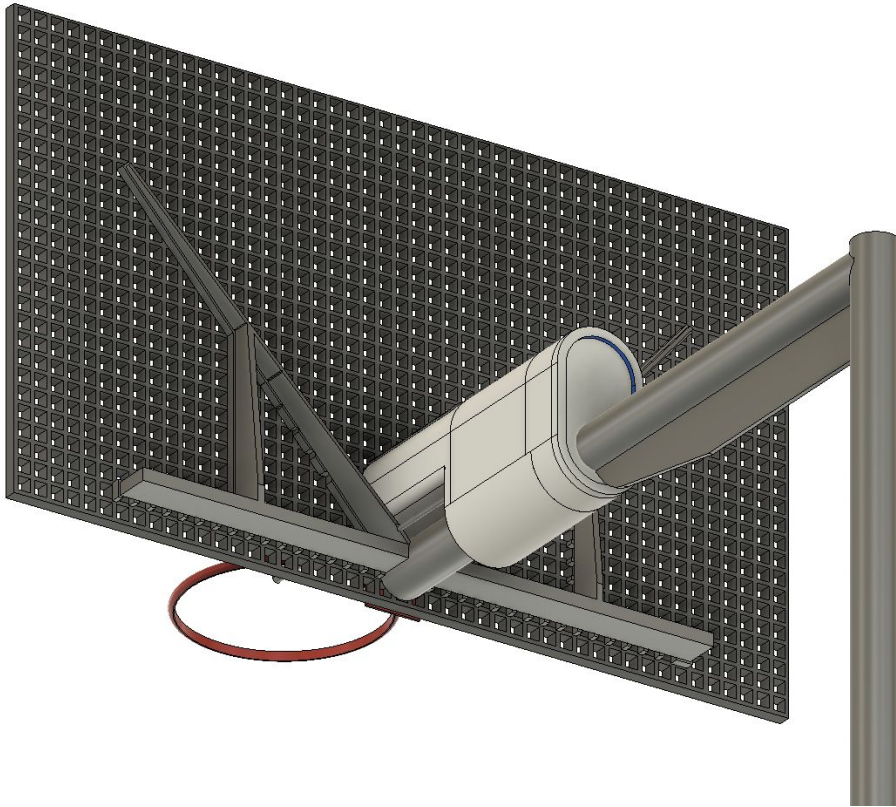
BSquared is the second iteration of the basketball project developed in collaboration with Moorland council. Generation 2's main features are an extending rod connected to a user programmable timer circuit. The design is made to be stand alone and off the grid, as it is completely powered by a solar panel and internal lithium Ion Battery. Generation 2 is a smaller, more refined version of the original. Each unit is individually designed to be installed around your specific backboards. This current iteration shown is made for a Trueline backboard and pole. The featured design can be personalised with either client's chosen logo, text or graphics.





B2SQUARED

Generation 2 Proposal
Victoria Park WA

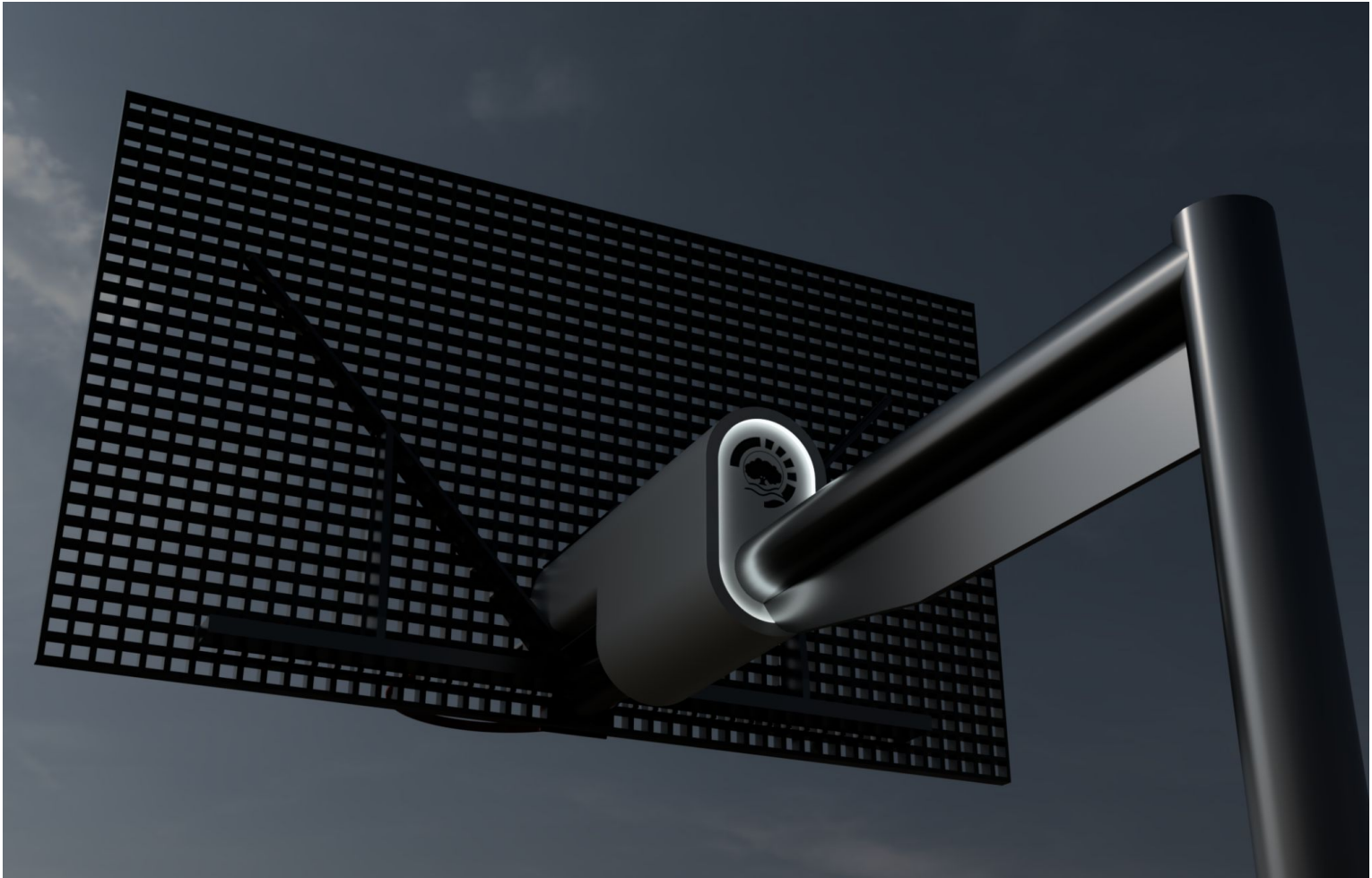


Computer generated render of potential design



B2SQUARED

Generation 2 Proposal
Victoria Park WA



Computer generated render of potential design with optional custom logo

Solution Continued

This design is only a prototype and is designed to be temporarily installed and tested. At this current stage its not intended to be a permanent fixture but we hope to leave and test it for as long as we can. This simplified design is intended to explore the validity of the solution within your local community. Seeking opinions from local communities throughout the trial will be essential for both parties in development of a solution.

The design will come partially assembled, with the design being fully reassembled around the pole of the basketball pole and board. It is designed to be able to be assembled with little additional knowledge. As we may not be Initially physically present to instal the unit at Victoria Park, we have designed to be installed either by council technicians or additionally with electronic or in person support from one of our team members. As we continue to expand our capacity, installation and maintenance will be done by IUNOX.



B2SQUARED

Generation 2 Proposal
Victoria Park WA

Intended TimeLine

We expect to have the **prototypes ready towards the end of November** with installation to take place at your discretion. We would encourage the timeline below in order to give the design the best chance to flourish. This timeline is designed to allow refinement over the duration of the trial.





B2SQUARED

Generation 2 Proposal
Victoria Park WA

Repairability

All parts will be under warranty during the trial of the design in the event that some parts of the prototype fail. This particular design has been developed with quick and easy repairability in mind. Based off our initial tests, the parts don't have a high rate of failure but its a consideration that we have to factor. Due to the fact that we are Melbourne- based we may be unavailable to repair units in person, so for this reason, the design will be largely modular and easily repairable. Technical support will be provided electronically by our team and we will provide all the resources we can.

Cost

The cost of a generation 2 unit will be around \$2200 for the initial units including GST. This will also cover any support during the installation and the duration of the trial. The cost will also include shipping through a vendor such as Auspost or DHL (FedEx). The costs will be paid in two parts, the first (\$1200) being upon confirmation of order and the other upon the dispatch of the unit (\$1000). Costs may change as we negotiate and customise the solution for your use case.

PR

During this trial, you may gain interest from local news organisations and community groups who are interested in the project. We would be happy to support you and facilitate interviews when we can if it is beneficial for your organisation. Each instance would have to be organised ahead of time with our team and we would most likely have to communicate electronically.

Current Project Stage

We are currently at the stage of developing and installing the second prototype within Moorland Council at Bush Reserve. This initial test will allow us to better refine the design that we will provide to you in late November. The units we send out in November will still be a prototype, but highly refined. We intend to hold an information event in late July or early August to gauge interest and facilitate discussions on orders. If you want to discuss the solution before then, please let us know at enquire@iunox.com.



B2SQUARED

Generation 2 Guide
Victoria Park WA

Written by: Jules Kabore
Ph: 0419523904
jules.r.kabore@gmail.com
IUNOX.com

Conclusion

We would like to thank you for your interest and patience with this project. At this stage we were pretty flexible in terms of details so if there is anything you want to change please let us know. If we move ahead and instal a unit at Koolbardi Park, we will try our best to be physically present but we have ensured that we can also engage electronically. As we were still new to this and are developing, we would like to reiterate how much we appreciate the continued interest and support of this project. We will try our hardest to develop the best solution we can while growing with you.

Thank you again,

- Jules Kaboré
Founder