

DP 33096



<b>TYPE</b>	FREEHOLD
<b>PURPOSE</b>	CONVERSION
<b>CERTIFICATE OF TITLE</b>	VOLUME 28 FOLIO 385A 809 51
<b>COMPILED FROM</b>	P 4377(2) & TRANSFER 6684/1934

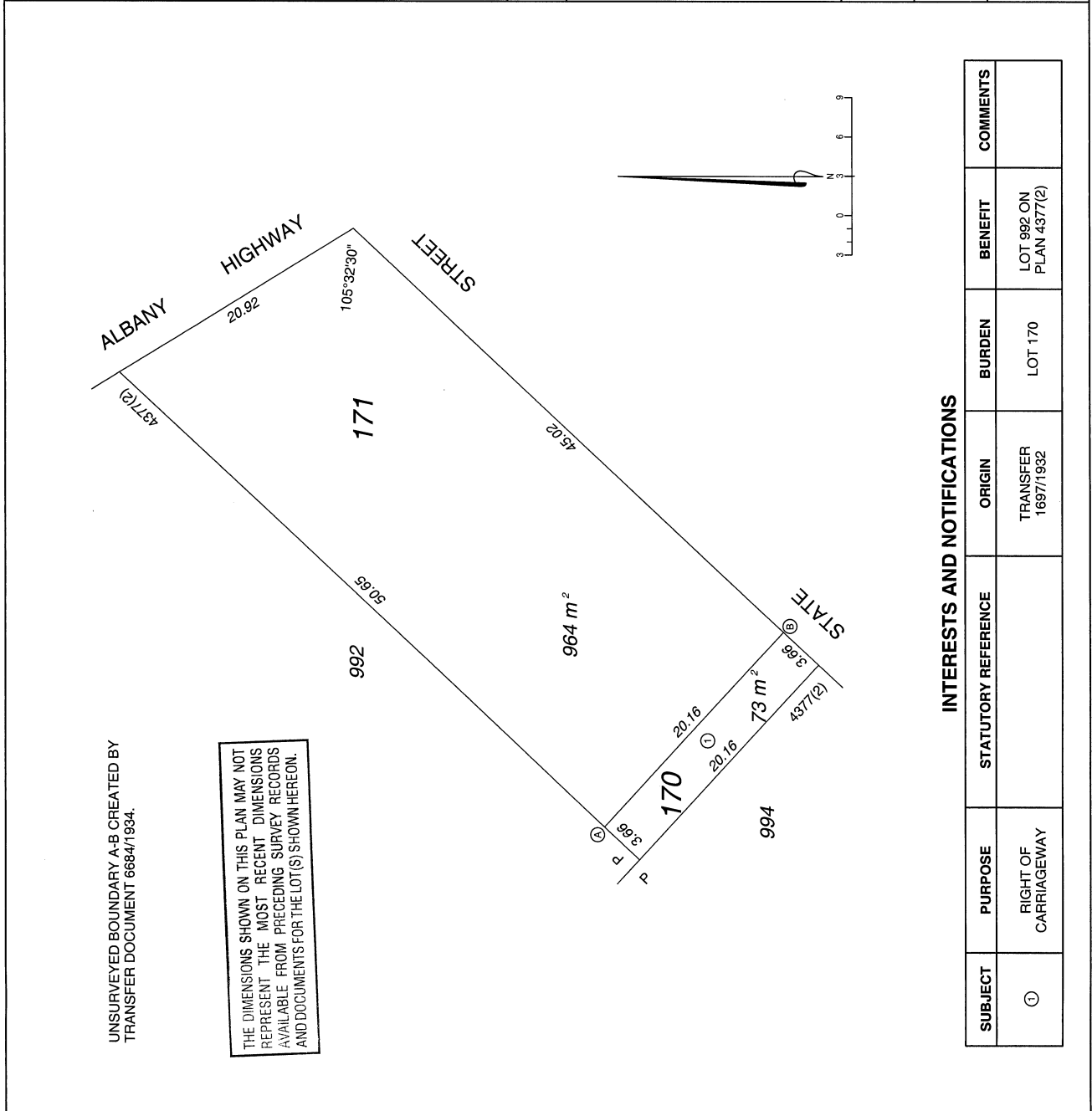
<b>DISTRICT</b>	SWAN	<b>DOLA FILE</b>	
<b>TOWNSITE</b>		<b>LOCAL AUTHORITY</b>	TOWN OF VICTORIA PARK
<b>LOCALITY</b>		<b>LOCALITY</b>	VICTORIA PARK
<b>FORMER TENURE</b>	PT LOTS 993 ON PLAN 4377(2)	<b>RECORDED</b>	
<b>INDEX</b>	28/385A 809/51	<b>ON</b>	RACHEL WALES PREPARED BY 31.10.2002 DATE
<b>CSD REFERENCE</b>	GART-CSD/DP33096.CSD	<b>PUBLIC</b>	G. D. FONG CHECKED BY 07.11.02 DATE

**CREATED FOR**

ALLOCATION OF LOT NUMBERS FOR TITLE DESCRIPTION PURPOSES TO THOSE PARTS OF LOT 993 ON PLAN 4377(2) CREATED BY SUBDIVISION BY TRANSFER 6684/1934.  
THE PARCEL INITIALLY CREATED BY TRANSFER 6684/1934 HAS BEEN DESIGNATED LOT 171 HEREON.

THIS PLAN PROVIDES A GRAPHIC REPRESENTATION OF EXISTING LOT(S) AND ALLOCATES WHOLE LOT(S) LAND DESCRIPTIONS FOR THE CONVERSION TO A DIGITAL REGISTER.

<b>SCALE</b>	1:300	<b>DEPOSITED PLAN</b>	<b>33096</b>
ALL DISTANCES ARE IN METRES		<b>SHEET</b>	1 OF 1
		<b>EDITION</b>	1
		<b>VERSION</b>	1



**INTERESTS AND NOTIFICATIONS**

SUBJECT	PURPOSE	STATUTORY REFERENCE	ORIGIN	BURDEN	BENEFIT	COMMENTS
①	RIGHT OF CARRIAGEWAY		TRANSFER 1697/1932	LOT 170	LOT 992 ON PLAN 4377(2)	