

## **Appendix H - Architectural Drawings for Oats Street Train Station (Plans, Elevations, Typical Sections) prepared by ALUA**



# VICTORIA PARK TO CANNING LEVEL CROSSING REMOVAL PROGRAM

## OATS STREET STATION - ARCHITECTURAL

### PACKAGE 1



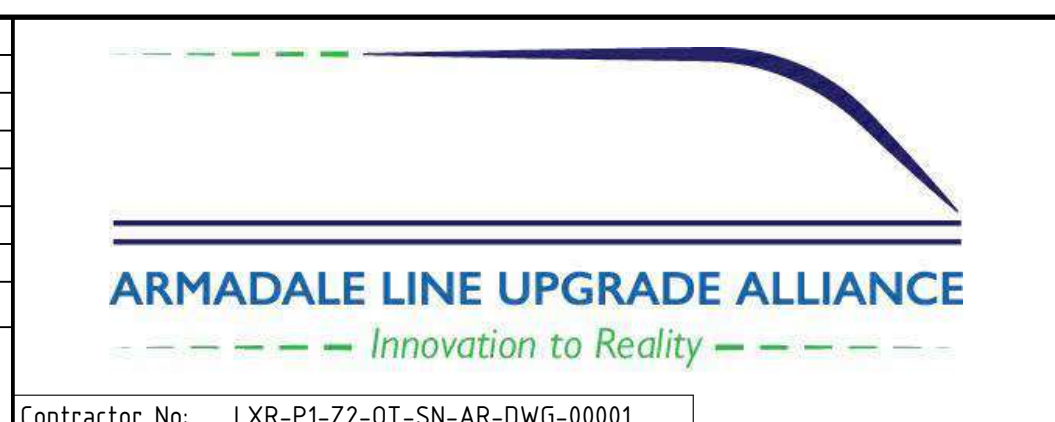
PRINT IN COLOUR

FOR INFORMATION

REV	DATE	AMENDMENT	DSN	DRN	CHK	APP
A02	13.12.22	DEVELOPMENT APPLICATION	HAS	HAS	JPD	BH
A01	21.11.22	ISSUED FOR INTERMEDIATE DETAILED DESIGN	HAS	HAS	JPD	BH
A	21.07.22	ISSUED FOR REFERENCE DESIGN	HAS	HAS	JPD	IS

ORIG SIZE	0 10 20 30 40 50 100mm	This document must not be copied without PTA's written permission, and the contents thereof must not be imparted to a third party nor be used for any unauthorised purpose.
A1	AT ORIGINAL PLOT SIZE	



VALIDATION	REFERENCES
SIGNATURE	
DATE	
DATE APPROVED	

SCALE	DESIGNED HASSELL
DATUM	DRAWN HASSELL
HORIZONTAL: PCG20	CHECKED J.P. DAVIES
VERTICAL: AHD71	APPROVED B. HOY
	DATE 21/07/22

VICTORIA PARK TO CANNING LEVEL CROSSING REMOVAL	
OATS STREET - ARCHITECTURAL STATION WIDE COVER SHEET	
PTA Drawing No: 04-A-71-AR0015	Rev: A02

Government of Western Australia Public Transport Authority	
OATS STREET - ARCHITECTURAL STATION WIDE COVER SHEET	
PTA Drawing No: 04-A-71-AR0015	Rev: A02



DRAWING LIST		
ALUA DRAWING NUMBER	PTA DRAWING NUMBER	SHEET NAME
LXR-P1-ZZ-OT-SN-AR-DWG-00001	04-A-71-AR0015	COVER SHEET
LXR-P1-ZZ-OT-SN-AR-DWG-00002	04-A-71-AR0016	DRAWING LIST
LXR-P1-ZZ-OT-SN-AR-DWG-00003	04-A-71-AR0017	SYMBOLOLOGY
LXR-P1-ZZ-OT-SN-AR-DWG-00004	04-A-71-AR0018	ABBREVIATIONS
LXR-P1-ZZ-OT-SN-AR-DWG-00005	04-A-71-AR0019	NOTES AND LEGENDS
LXR-P1-ZZ-OT-SN-AR-DWG-00006	04-A-71-AR0020	AXONOMETRIC
LXR-P1-ZZ-OT-SN-AR-DWG-00007	04-A-71-AR0021	RENDER IMAGE - EXTERNAL VIEW
LXR-P1-ZZ-OT-SN-AR-DWG-00008	04-A-71-AR0022	RENDER IMAGE - INTERNAL VIEW
LXR-P1-ZZ-OT-SN-AR-DWG-00010	04-A-71-AR0025	LOCALITY PLAN
LXR-P1-ZZ-OT-SN-AR-DWG-00011	04-A-71-AR0026	SITE PLAN
LXR-P1-ZZ-OT-SN-AR-DWG-00100	04-A-71-AR0027	GA PLANS
LXR-P1-ZZ-OT-SN-AR-DWG-00101	04-A-71-AR0028	GA ROOF PLANS
LXR-P1-ZZ-OT-SN-AR-DWG-00102	04-A-71-AR0029	GA REFLECTED CEILING PLANS
LXR-P1-ZZ-OT-SN-AR-DWG-00103	04-A-71-AR0030	GA ELEVATIONS
LXR-P1-ZZ-OT-SN-AR-DWG-00104	04-A-71-AR0031	GA LONG SECTIONS
LXR-P1-ZZ-OT-SN-AR-DWG-00105	04-A-71-AR0032	GA CROSS SECTION
LXR-P1-ZZ-OT-SN-AR-DWG-00120	04-A-71-AR0033	CONCOURSE PLAN - ZONE A
LXR-P1-ZZ-OT-SN-AR-DWG-00121	04-A-71-AR0034	CONCOURSE PLAN - ZONE B
LXR-P1-ZZ-OT-SN-AR-DWG-00122	04-A-71-AR0035	CONCOURSE PLAN - ZONE C
LXR-P1-ZZ-OT-SN-AR-DWG-00123	04-A-71-AR0036	PLATFORM PLAN - ZONE A
LXR-P1-ZZ-OT-SN-AR-DWG-00124	04-A-71-AR0037	PLATFORM PLAN - ZONE B
LXR-P1-ZZ-OT-SN-AR-DWG-00125	04-A-71-AR0038	PLATFORM PLAN - ZONE C
LXR-P1-ZZ-OT-SN-AR-DWG-00130	04-A-71-AR0039	CONCOURSE ROOF PLAN - ZONE A
LXR-P1-ZZ-OT-SN-AR-DWG-00131	04-A-71-AR0040	CONCOURSE ROOF PLAN - ZONE B
LXR-P1-ZZ-OT-SN-AR-DWG-00132	04-A-71-AR0041	CONCOURSE ROOF PLAN - ZONE C
LXR-P1-ZZ-OT-SN-AR-DWG-00133	04-A-71-AR0042	PLATFORM ROOF PLAN - ZONE A
LXR-P1-ZZ-OT-SN-AR-DWG-00134	04-A-71-AR0043	PLATFORM ROOF PLAN - ZONE B
LXR-P1-ZZ-OT-SN-AR-DWG-00140	04-A-71-AR0045	RCP - CONCOURSE - ZONE A
LXR-P1-ZZ-OT-SN-AR-DWG-00141	04-A-71-AR0046	RCP - CONCOURSE - ZONE B
LXR-P1-ZZ-OT-SN-AR-DWG-00142	04-A-71-AR0047	RCP - CONCOURSE - ZONE C
LXR-P1-ZZ-OT-SN-AR-DWG-00143	04-A-71-AR0048	RCP - VIADUCT SOFFIT - ZONE A
LXR-P1-ZZ-OT-SN-AR-DWG-00144	04-A-71-AR0049	RCP - VIADUCT SOFFIT - ZONE B
LXR-P1-ZZ-OT-SN-AR-DWG-00145	04-A-71-AR0050	RCP - VIADUCT SOFFIT - ZONE C
LXR-P1-ZZ-OT-SN-AR-DWG-00146	04-A-71-AR0051	RCP - PLATFORM - ZONE A
LXR-P1-ZZ-OT-SN-AR-DWG-00147	04-A-71-AR0052	RCP - PLATFORM - ZONE B
LXR-P1-ZZ-OT-SN-AR-DWG-00150	04-A-71-AR0054	ELEVATIONS - STATION - WEST - SHEET 1
LXR-P1-ZZ-OT-SN-AR-DWG-00151	04-A-71-AR0055	ELEVATIONS - STATION - WEST - SHEET 2
LXR-P1-ZZ-OT-SN-AR-DWG-00152	04-A-71-AR0056	ELEVATIONS - STATION - EAST - SHEET 1
LXR-P1-ZZ-OT-SN-AR-DWG-00153	04-A-71-AR0057	ELEVATIONS - STATION - EAST - SHEET 2
LXR-P1-ZZ-OT-SN-AR-DWG-00154	04-A-71-AR0058	ELEVATIONS - NORTH AND SOUTH ENTRIES
LXR-P1-ZZ-OT-SN-AR-DWG-00155	04-A-71-AR0059	ELEVATIONS - BUILDING FACADES - SHEET 1
LXR-P1-ZZ-OT-SN-AR-DWG-00156	04-A-71-AR0060	ELEVATIONS - BUILDING FACADES - SHEET 2
LXR-P1-ZZ-OT-SN-AR-DWG-00157	04-A-71-AR0061	ELEVATIONS - BUILDING FACADES - SHEET 3
LXR-P1-ZZ-OT-SN-AR-DWG-00158	04-A-71-AR0062	ELEVATIONS - BUILDING FACADES - SHEET 4
LXR-P1-ZZ-OT-SN-AR-DWG-00159	04-A-71-AR0063	ELEVATIONS - BUILDING FACADES - SHEET 5
LXR-P1-ZZ-OT-SN-AR-DWG-00160	04-A-71-AR0064	SECTIONS - LONG - SHEET 1
LXR-P1-ZZ-OT-SN-AR-DWG-00161	04-A-71-AR0065	SECTIONS - LONG - SHEET 2
LXR-P1-ZZ-OT-SN-AR-DWG-00162	04-A-71-AR0066	SECTIONS - LONG - SHEET 3
LXR-P1-ZZ-OT-SN-AR-DWG-00163	04-A-71-AR0067	SECTIONS - LONG - SHEET 4
LXR-P1-ZZ-OT-SN-AR-DWG-00164	04-A-71-AR0068	SECTIONS - CROSS - SHEET 1
LXR-P1-ZZ-OT-SN-AR-DWG-00165	04-A-71-AR0069	SECTIONS - CROSS - SHEET 2
LXR-P1-ZZ-OT-SN-AR-DWG-00166	04-A-71-AR0070	SECTIONS - CROSS - SHEET 3
LXR-P1-ZZ-OT-SN-AR-DWG-00167	04-A-71-AR0071	SECTIONS - CROSS - SHEET 4
LXR-P1-ZZ-OT-SN-AR-DWG-00168	04-A-71-AR0072	SECTIONS - CROSS - SHEET 5
LXR-P1-ZZ-OT-SN-AR-DWG-00190	04-A-71-AR0075	LIFT 1 PLANS AND ELEVATIONS
LXR-P1-ZZ-OT-SN-AR-DWG-00191	04-A-71-AR0076	LIFT 1 SECTIONS
LXR-P1-ZZ-OT-SN-AR-DWG-00192	04-A-71-AR0077	LIFT 2 PLANS AND ELEVATIONS

DRAWING LIST		
ALUA DRAWING NUMBER	PTA DRAWING NUMBER	SHEET NAME
LXR-P1-ZZ-OT-SN-AR-DWG-00193	04-A-71-AR0078	LIFT 2 SECTIONS
LXR-P1-ZZ-OT-SN-AR-DWG-00194	04-A-71-AR0079	LIFT 3 PLANS AND ELEVATIONS
LXR-P1-ZZ-OT-SN-AR-DWG-00195	04-A-71-AR0080	LIFT 3 SECTIONS
LXR-P1-ZZ-OT-SN-AR-DWG-00196	04-A-71-AR0081	LIFT 4 PLANS AND ELEVATIONS
LXR-P1-ZZ-OT-SN-AR-DWG-00197	04-A-71-AR0082	LIFT 4 SECTIONS
LXR-P1-ZZ-OT-SN-AR-DWG-00198	04-A-71-AR0083	LIFT DETAILS - SHEET 1
LXR-P1-ZZ-OT-SN-AR-DWG-00199	04-A-71-AR0084	LIFT DETAILS - SHEET 2
LXR-P1-ZZ-OT-SN-AR-DWG-00200	04-A-71-AR0085	ESCALATOR DETAILS - SHEET 1
LXR-P1-ZZ-OT-SN-AR-DWG-00201	04-A-71-AR0086	ESCALATOR DETAILS - SHEET 2
LXR-P1-ZZ-OT-SN-AR-DWG-00202	04-A-71-AR0087	ESCALATOR DETAILS - SHEET 3
LXR-P1-ZZ-OT-SN-AR-DWG-00203	04-A-71-AR0088	ESCALATOR DETAILS - SHEET 4
LXR-P1-ZZ-OT-SN-AR-DWG-00210	04-A-71-AR0090	STAIR 1 PLANS
LXR-P1-ZZ-OT-SN-AR-DWG-00211	04-A-71-AR0091	STAIR 1 ELEVATIONS
LXR-P1-ZZ-OT-SN-AR-DWG-00212	04-A-71-AR0092	STAIR 1 SECTIONS
LXR-P1-ZZ-OT-SN-AR-DWG-00213	04-A-71-AR0093	STAIR 2 PLANS
LXR-P1-ZZ-OT-SN-AR-DWG-00214	04-A-71-AR0094	STAIR 2 ELEVATIONS
LXR-P1-ZZ-OT-SN-AR-DWG-00215	04-A-71-AR0095	STAIR 2 SECTIONS
LXR-P1-ZZ-OT-SN-AR-DWG-00216	04-A-71-AR0096	STAIR 3 PLANS
LXR-P1-ZZ-OT-SN-AR-DWG-00217	04-A-71-AR0097	STAIR 3 ELEVATIONS
LXR-P1-ZZ-OT-SN-AR-DWG-00218	04-A-71-AR0098	STAIR 3 SECTIONS
LXR-P1-ZZ-OT-SN-AR-DWG-00219	04-A-71-AR0099	STAIR 4 PLANS
LXR-P1-ZZ-OT-SN-AR-DWG-00220	04-A-71-AR0100	STAIR 4 ELEVATIONS
LXR-P1-ZZ-OT-SN-AR-DWG-00221	04-A-71-AR0101	STAIR 4 SECTIONS
LXR-P1-ZZ-OT-SN-AR-DWG-00225	04-A-71-AR0102	STAIR DETAILS - SHEET 1
LXR-P1-ZZ-OT-SN-AR-DWG-00226	04-A-71-AR0103	STAIR DETAILS - SHEET 2
LXR-P1-ZZ-OT-SN-AR-DWG-00230	04-A-71-AR0105	BALUSTRADE DETAILS - SHEET 1
LXR-P1-ZZ-OT-SN-AR-DWG-00231	04-A-71-AR0106	BALUSTRADE DETAILS - SHEET 2
LXR-P1-ZZ-OT-SN-AR-DWG-00240	04-A-71-AR0110	SCREEN SETOUT AND DETAILS - SHEET 1
LXR-P1-ZZ-OT-SN-AR-DWG-00250	04-A-71-AR0120	WALL TYPES - SHEET 1
LXR-P1-ZZ-OT-SN-AR-DWG-00251	04-A-71-AR0121	WALL TYPES - SHEET 2
LXR-P1-ZZ-OT-SN-AR-DWG-00255	04-A-71-AR0122	GLAZING SCHEDULE - SHEET 1
LXR-P1-ZZ-OT-SN-AR-DWG-00256	04-A-71-AR0123	GLAZING SCHEDULE - SHEET 2
LXR-P1-ZZ-OT-SN-AR-DWG-00260	04-A-71-AR0125	DOOR SCHEDULE
LXR-P1-ZZ-OT-SN-AR-DWG-00261	04-A-71-AR0126	DOOR DETAILS - SHEET 1
LXR-P1-ZZ-OT-SN-AR-DWG-00262	04-A-71-AR0127	DOOR DETAILS - SHEET 2
LXR-P1-ZZ-OT-SN-AR-DWG-00265	04-A-71-AR0130	LOUVRE SCHEDULE AND DETAILS
LXR-P1-ZZ-OT-SN-AR-DWG-00270	04-A-71-AR0135	GATE SCHEDULE AND DETAILS
LXR-P1-ZZ-OT-SN-AR-DWG-00273	04-A-71-AR0138	ROLLER SHUTTER DETAILS - SHEET 1
LXR-P1-ZZ-OT-SN-AR-DWG-00274	04-A-71-AR0139	ROLLER SHUTTER DETAILS - SHEET 2
LXR-P1-ZZ-OT-SN-AR-DWG-00280	04-A-71-AR0140	CONSTRUCTION DETAILS - SHEET 1
LXR-P1-ZZ-OT-SN-AR-DWG-00281	04-A-71-AR0141	CONSTRUCTION DETAILS - SHEET 2
LXR-P1-ZZ-OT-SN-AR-DWG-00282	04-A-71-AR0142	CONSTRUCTION DETAILS - SHEET 3
LXR-P1-ZZ-OT-SN-AR-DWG-00283	04-A-71-AR0143	CONSTRUCTION DETAILS - SHEET 4
LXR-P1-ZZ-OT-SN-AR-DWG-00284	04-A-71-AR0144	CONSTRUCTION DETAILS - SHEET 5
LXR-P1-ZZ-OT-SN-AR-DWG-00285	04-A-71-AR0145	CONSTRUCTION DETAILS - SHEET 6
LXR-P1-ZZ-OT-SN-AR-DWG-00286	04-A-71-AR0146	CONSTRUCTION DETAILS - SHEET 7
LXR-P1-ZZ-OT-SN-AR-DWG-00287	04-A-71-AR0147	CONSTRUCTION DETAILS - SHEET 8
LXR-P1-ZZ-OT-SN-AR-DWG-00288	04-A-71-AR0148	CONSTRUCTION DETAILS - SHEET 9
LXR-P1-ZZ-OT-SN-AR-DWG-00300	04-A-71-AR0155	ROOM LAYOUT - WET AREAS - SHEET 1
LXR-P1-ZZ-OT-SN-AR-DWG-00301	04-A-71-AR0156	ROOM LAYOUT - WET AREAS - SHEET 2
LXR-P1-ZZ-OT-SN-AR-DWG-00302	04-A-71-AR0157	ROOM LAYOUT - WET AREAS - SHEET 3
LXR-P1-ZZ-OT-SN-AR-DWG-00303	04-A-71-AR0158	ROOM LAYOUT - WET AREAS - SHEET 4
LXR-P1-ZZ-OT-SN-AR-DWG-00304	04-A-71-AR0159	ROOM LAYOUT - WET AREAS - SHEET 5
LXR-P1-ZZ-OT-SN-AR-DWG-00305	04-A-71-AR0160	ROOM LAYOUT - CSO
LXR-P1-ZZ-OT-SN-AR-DWG-00306	04-A-71-AR0161	ROOM LAYOUT - PLATFORM STAFF OFFICE 1 AND 2
LXR-P1-ZZ-OT-SN-AR-DWG-00309	04-A-71-AR0164	BUS SHELTER DETAILS

113

PRINT IN COLOUR

FOR INFORMATION

REV	DATE	AMENDMENT	DSN	DRN	CHK	APP
A02	13.12.22	DEVELOPMENT APPLICATION	HAS	HAS	JPD	BH
A01	21.11.22	ISSUED FOR INTERMEDIATE DETAILED DESIGN	HAS	HAS	JPD	BH
A	21.07.22	ISSUED FOR REFERENCE DESIGN	HAS	HAS	JPD	IS
ORIG SIZE	A1		AT ORIGINAL PLOT SIZE			



VALIDATION  
SIGNATURE  
DATE  
DATE APPROVED

REFERENCES

SCALE  
DATUM  
HORIZONTAL: PCG20  
VERTICAL: AHD71

DESIGNED HASSELL  
DRAWN HASSELL  
CHECKED J.P. DAVIES  
APPROVED B. HOY  
DATE 21/07/22

Government of Western Australia  
Public Transport Authority

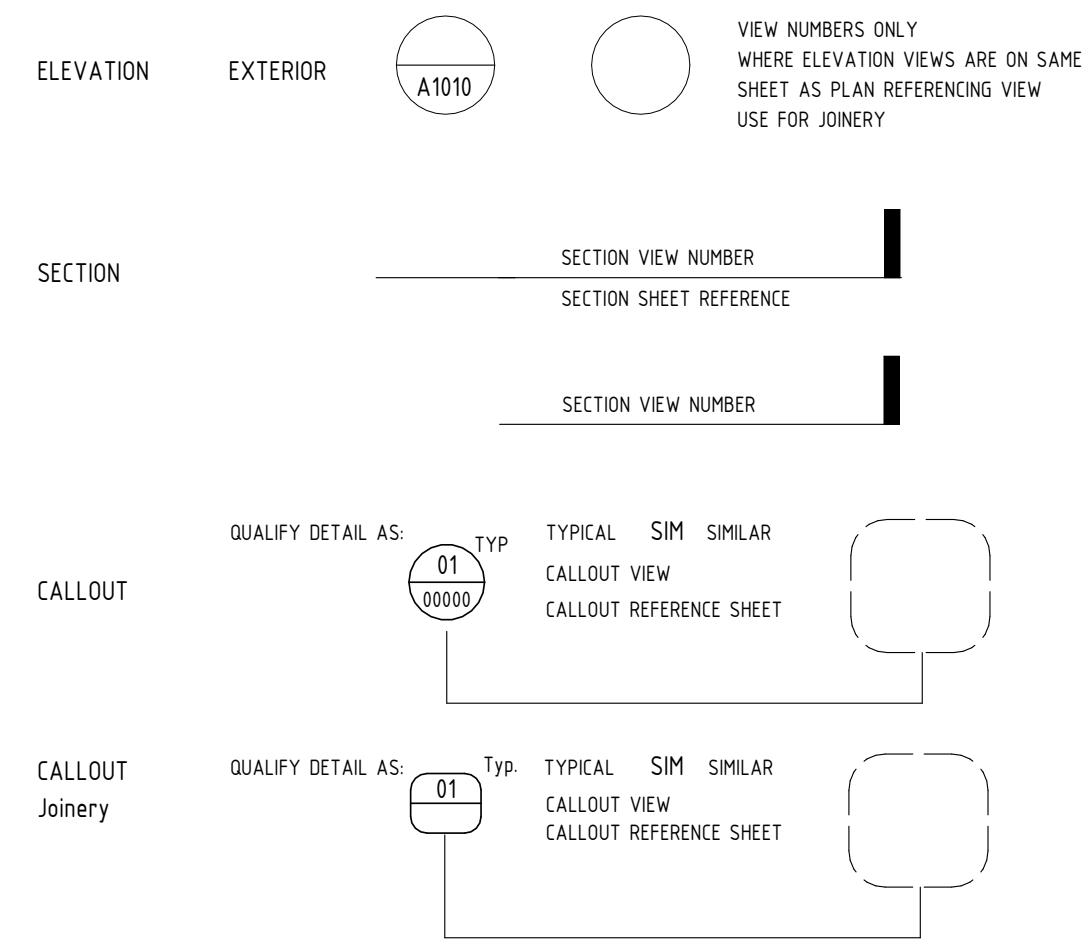
VICTORIA PARK TO CANNING  
LEVEL CROSSING REMOVAL

OATS STREET - ARCHITECTURAL  
STATION WIDE  
DRAWING LIST

PTA Drawing No: 04-A-71-AR0016 Rev: A02

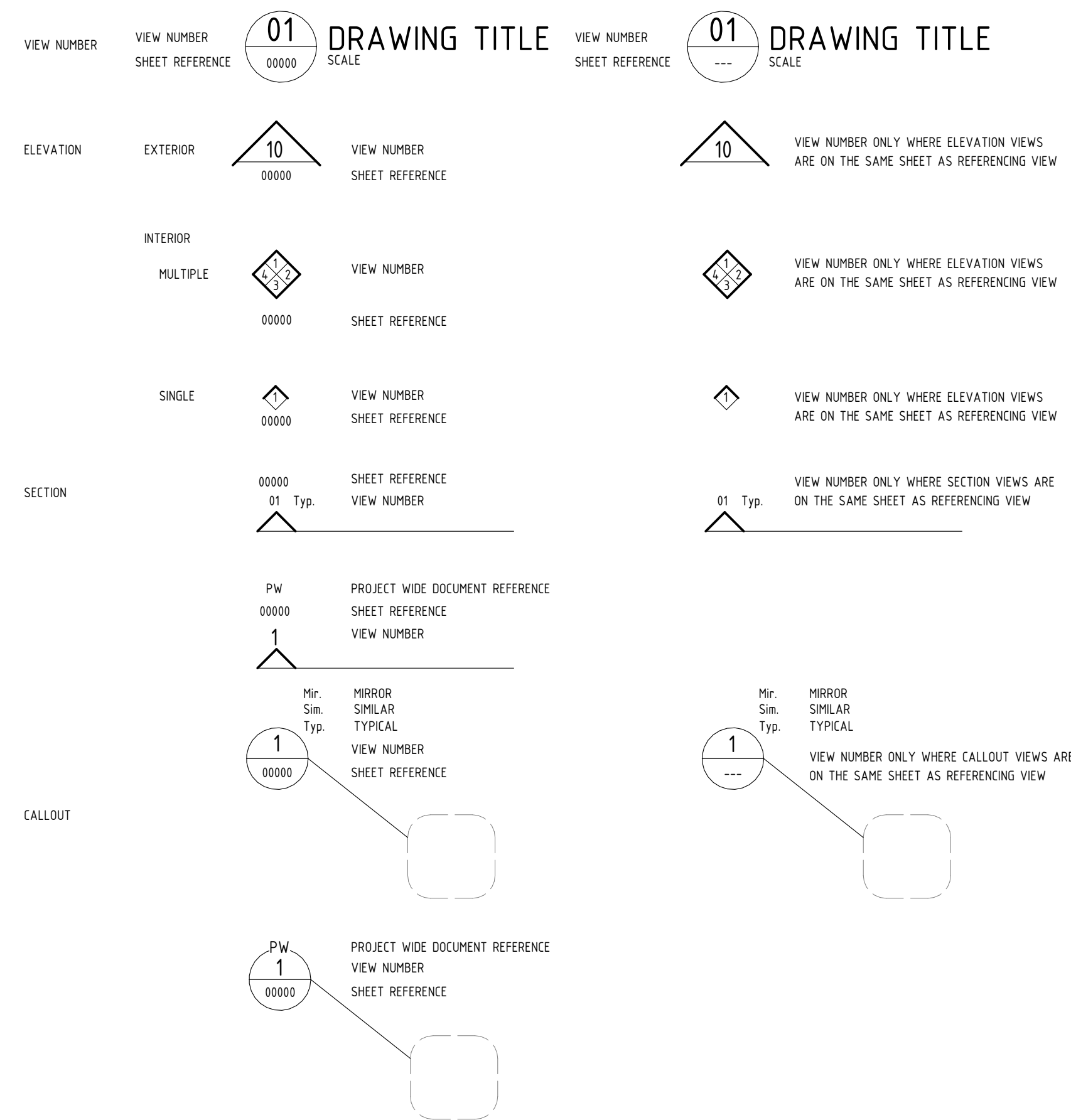
SYMBOLOLOGY

CROSS REFERENCING

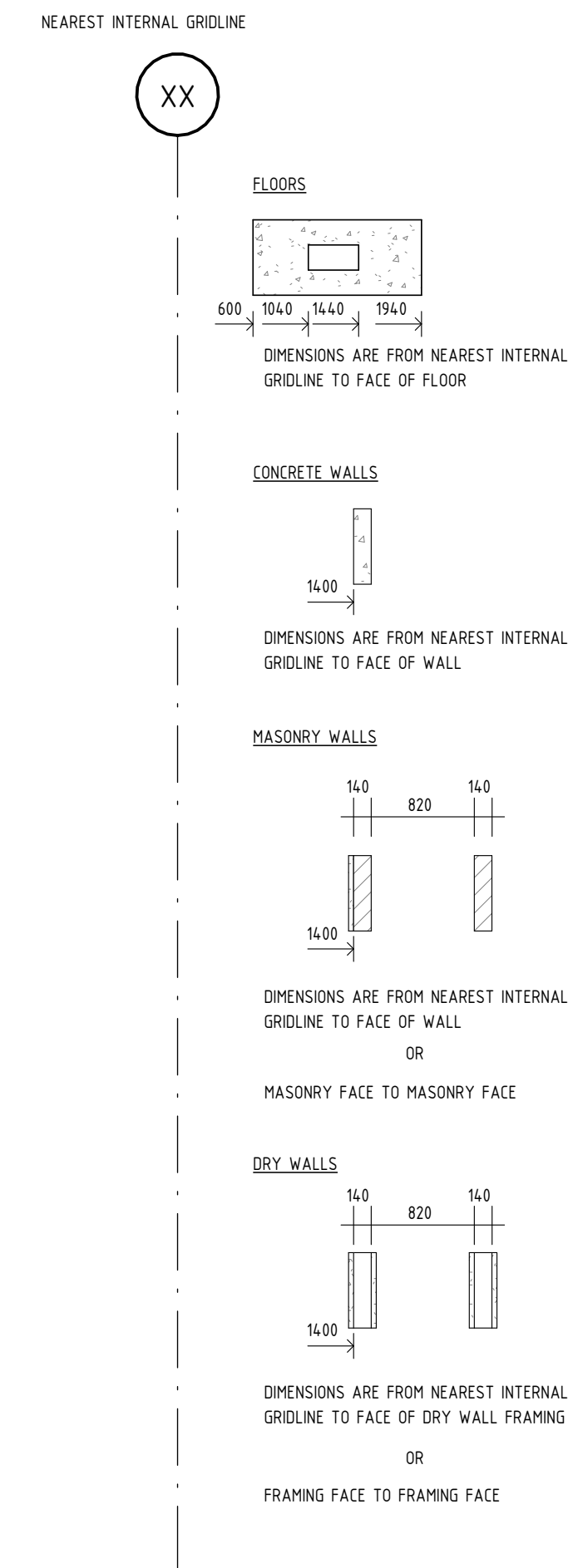


LEGENDS

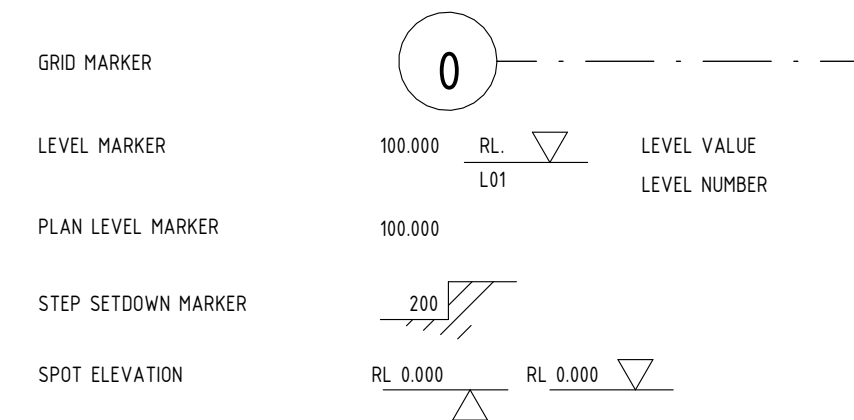
CROSS REFERENCING



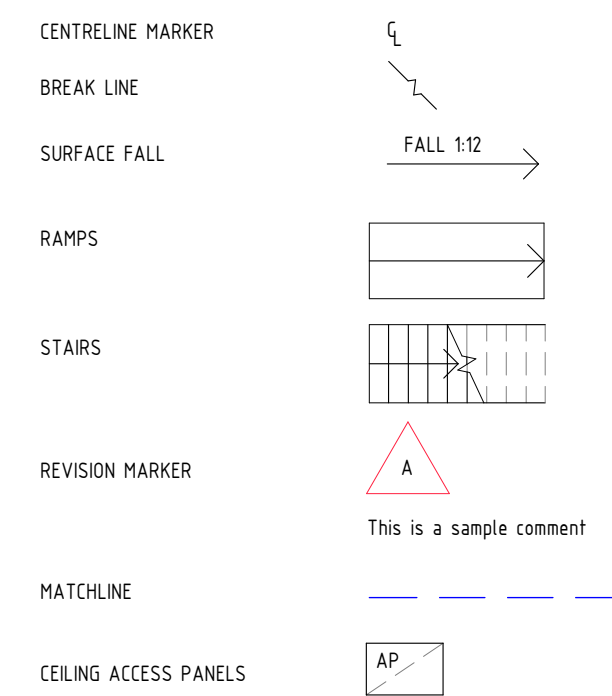
DIMENSION LEGEND



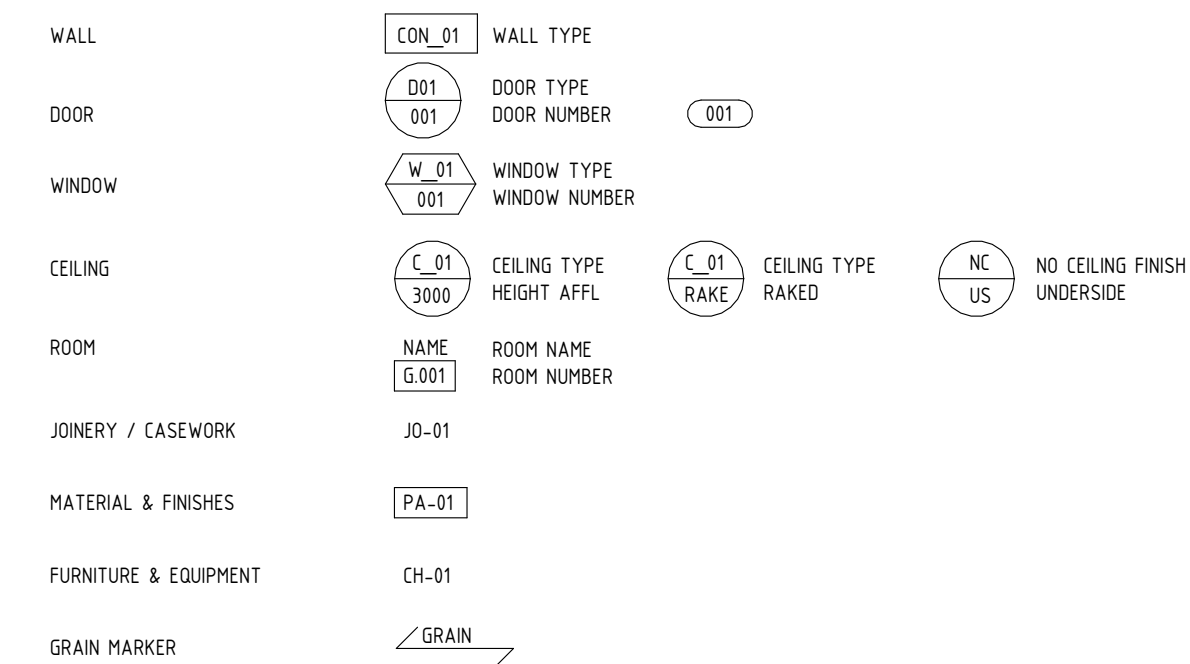
GRIDS AND LEVELS



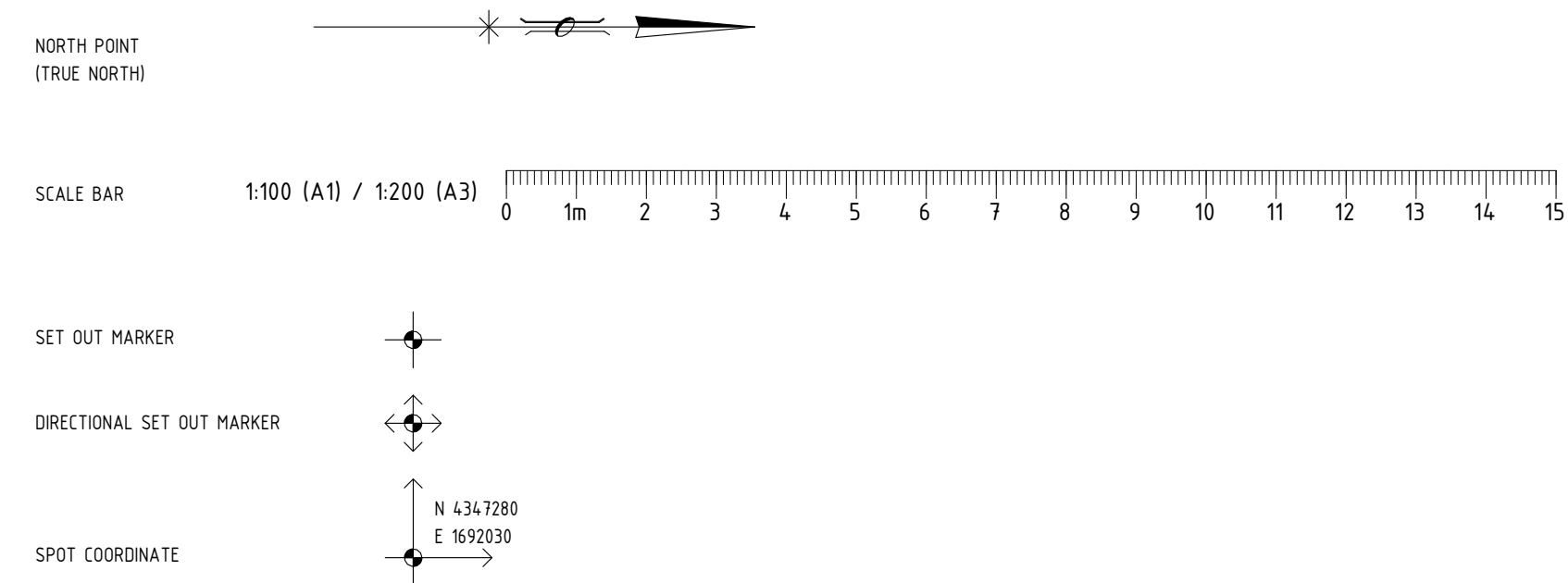
MISCELLANEOUS MARKERS



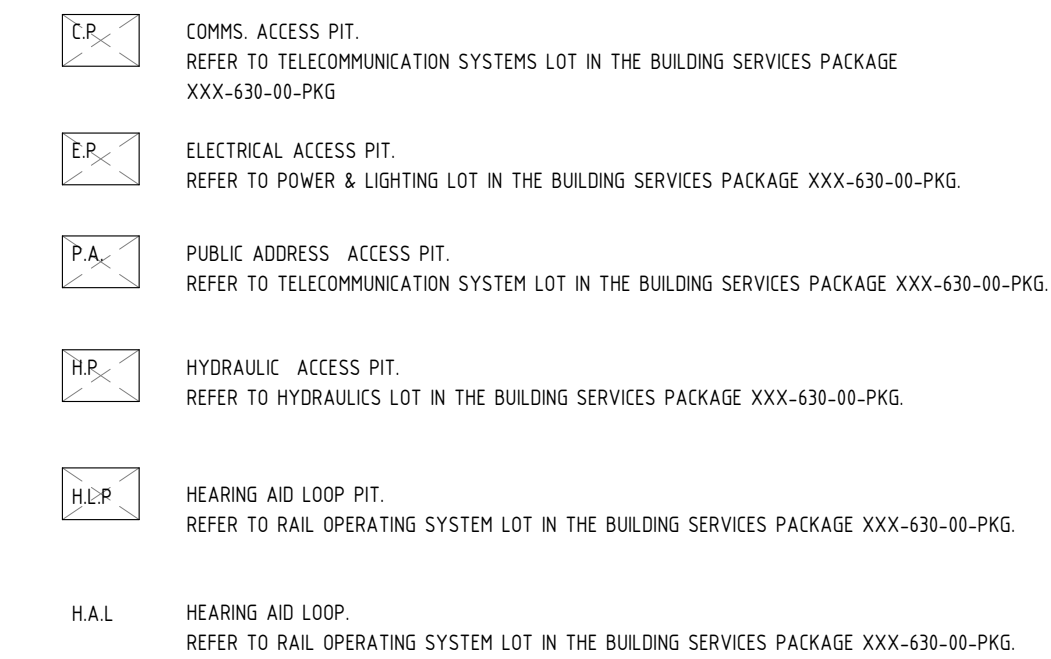
ELEMENT AND MATERIAL MARKERS



LOCATION AND SET OUT



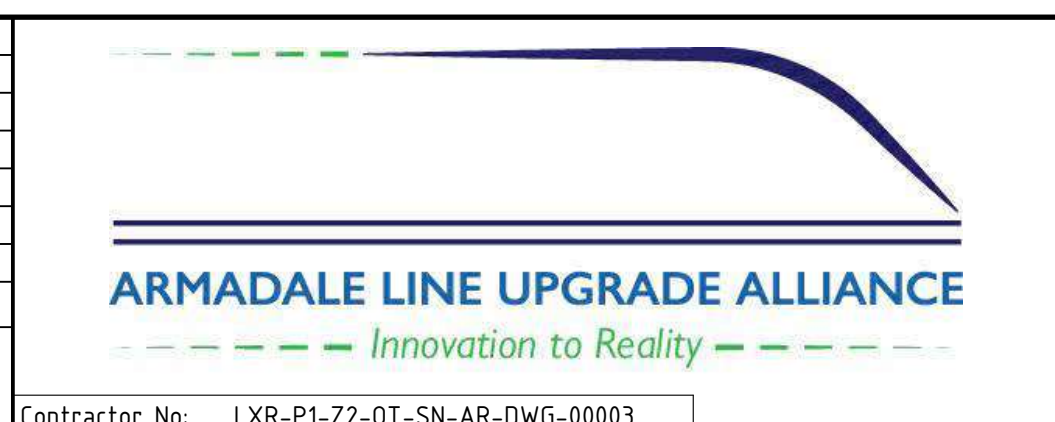
SERVICE PITS (FLOORS)



PRINT IN COLOUR

FOR INFORMATION

A02	13.12.22	DEVELOPMENT APPLICATION	HAS	HAS	JPD	BH	
A01	21.11.22	ISSUED FOR INTERMEDIATE DETAILED DESIGN	HAS	HAS	JPD	BH	
A	21.07.22	ISSUED FOR REFERENCE DESIGN	HAS	HAS	JPD	IS	
REV	DATE	AMENDMENT	DSN	DRN	CHK	APP	
ORIG SIZE	0 10 20 30 40 50 100mm		This document must not be copied without PTA's written permission, and the contents thereof must not be imparted to a third party nor be used for any unauthorised purpose.				
A1	AT ORIGINAL PLOT SIZE		Contractor No: LXR-P1-22-OT-SN-AR-DWG-00003				



VALIDATION  
SIGNATURE  
DATE  
DATE APPROVED

REFERENCES

SCALE  
1 : 50  
DATUM  
HORIZONTAL: PCG20  
VERTICAL: AHD71

DESIGNED HASSELL  
DRAWN HASSELL  
CHECKED J.P. DAVIES  
APPROVED B. HOY  
DATE 21/07/22

Government of Western Australia  
Public Transport Authority

VICTORIA PARK TO CANNING  
LEVEL CROSSING REMOVAL

OATS STREET - ARCHITECTURAL  
STATION WIDE  
SYMBOLOLOGY

PTA Drawing No: 04-A-71-AR0017 Rev: A02



**GENERAL ABBREVIATIONS**

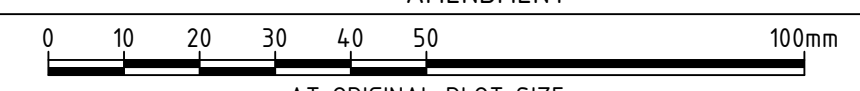
ACC	AIR CONDITIONING CONDENSER
ACL	ASSISTANCE CALL LIGHT
AF	APRON FLASHING, REFER TO SCHEDULE FOR DETAILS
AFFL	ABOVE FINISHED FLOOR LEVEL
AFG	AUTOMATIC FARE GATE
AFG	ABOVE GROUND
AM	ARCHITECTURAL METALWORK (STAIR NOSING & THRESHOLD PLATES). REFER TO SCHEDULE FOR DETAILS
AP	ACCESS PANEL
ATM	AUTOMATIC TELLER MACHINE
AVVM	ADD VALUE VENDING MACHINE
BC	BARGE CAPPING, REFER TO SCHEDULE FOR DETAILS
BCT	BABY CHANGE TABLE
BF	BARGE FLASHING, REFER TO SCHEDULE FOR DETAILS
BG	BOX GUTTER
BH	BROOM HOLDER
BN-XX	RUBBISH BIN, REFER TO FF&E SCHEDULE FOR TYPE DETAILS
BS-XX	BALLUSTRADE SYSTEM, REFER TO ARCHITECTURAL DRAWINGS FOR DETAILS
BLK-XX	BLOCKWORK, REFER TO M&F SCHEDULE FOR FINISHES, AND ARCHITECTURAL DRAWINGS FOR DETAILS
BM	BIRD MESH, REFER TO M&F SCHEDULE FOR DETAILS
BOL-XX	BOLLARD, REFER TO FF&E SCHEDULE
BP-XX	BIRD PROOFING, REFER TO FF&E SCHEDULE
BR	BACKREST (WC)
BRK	BROOM MOP RACK
CBU	CHILLED / BOILING WATER UNIT
CCTV	CLOSED CIRCUIT TELEVISION
CER	COMMUNICATION EQUIPMENT ROOM
CFC	COMPRESSED FIBRE CEMENT SHEETING
CH	COAT HOOK
CHS	CIRCULAR HOLLOW SECTION
CMJ	CONCRETE MOVEMENT JOINT
CL	CONSTRUCTION JOINT
CL	CENTRELINE
CL-XX	CILING / SOFFIT, REFER TO M&F SCHEDULE FOR TYPE DETAILS
CO-XX	CONCRETE FINISH, REFER TO M&F SCHEDULE FOR TYPE DETAILS
COL	COLUMN
CON-XX	CONCRETE WALL TYPE, REFER TO M&F SCHEDULE FOR TYPE DETAILS
CONC	REINFORCED CONCRETE
COS	CONFIRM ON SITE
CP	CLADDING PANEL TYPE
CPF	CAPPED CONDUIT POINT FOR FUTURE SERVICES RETICULATION
CPBD	CUPBOARD
CR	CARD READER
CS	CLEANER'S SINK
CSP	COLLECTION SUMP PIT
DXX	DOOR TYPE, REFER TO SCHEDULE FOR DOOR TYPE DETAILS DETAILS
DAPB	DESIGNATED ACCESSIBLE PARKING BAY
DB	DISTRIBUTION BOARD
DC-XX	DRAINAGE CHANNEL, REFER TO M&F SCHEDULE FOR DETAILS
DEJ	DOWELLED EXPANSION JOINT
DF	DRINK FOUNTAIN
DJ	DOWELLED JOINT
DKP	DOOR KICKPLATE
DIA	DIAMETER
DIGR	DIGITAL RADIO
DL	DOWNLIGHT
DO	DRAINAGE OUTLET
DP-XX	DOWNDRAPE
DR-XX	FLOOR DRAINAGE OUTLET
DRB	DURESS BUTTON CONNECTED TO ALARM SYSTEM
DS	DIRECTIONAL SIGNAGE
EA	EQUAL ANGLE
EB-XX	EYE BOLT, PROPRIETARY ROOF SAFETY SYSTEM
EBP	EARTH BONDING PIT
EF	EXHAUST FAN
EG	EAVES GUTTER
EJ	EXPANSION JOINT
EM	EMERGENCY LIGHT
EP	ELECTRICAL PIT TYPE
EQ	EQUAL
EX	EXISTING ITEMS
FAS-XX	FASCIA, REFER M&F SCHEDULE FOR TYPE DETAILS
FBT-XX	FIXING BRACKET TYPE
FC	FIBRE CEMENT SHEETING
FB	FIELD CABINET
FCL	FINISHED CEILING LEVEL
FCU	FILING CABINET UNIT
FE-01	FENCE STATION (PALISADE FENCE) REFER TO M&F SCHEDULES FOR TYPE DETAILS.
FE-02	FENCE STATION (CHAIN LINK MESH FENCE) REFER TO M&F SCHEDULES FOR TYPE DETAILS.
FEX-01	FIRE EXTINGUISHER - DCP TYPE
FEX-02	FIRE EXTINGUISHER - CO2 TYPE
FFL	FINISHED FLOOR LEVEL
FOL	FINISHED GROUND LEVEL
FH	FIRE HYDRANT
FL-XX	FLOOR FINISH, REFER TO SCHEDULE FOR TYPE DETAILS
FLB	FLOOR BOX - FLUSH MOUNT
FR	FRIDGE
FW	FLOOR WASTE
G	GATE, REFER TO GATE SCHEDULE FOR TYPE DETAILS
GALV	COLD GALVANISED
GL-XX	GLASS PANEL, REFER TO FACADE ENGINEERS SCHEDULE FOR GLASS TYPE DETAILS.
GP	STORMWATER GULLY PIT
GPO	GENERAL PURPOSE POWER OUTLET
GR-XX	GRAB RAIL, REFER TO FF&E SCHEDULE FOR TYPE DETAILS
HBD-XX	HAND BASIN, REFER TO FF&E SCHEDULE FOR TYPE DETAILS
HCB	HYDRAULIC CABINET
HD-XX	HAND DRYER, REFER TO FF&E SCHEDULE FOR TYPE DETAILS
HOG	HOT DIPPED GALVANISED
HJ	HORIZONTAL JOINT
HLP	HEARING AID LOOP PIT
HAL-XX	HEARING AID LOOP
HPH	HIGH PRESSURE HOSE OUTLET
HP	HYDRAULIC PIT

HPP	HIGH PRESSURE PUMP OUTLET
HR-XX	HANDRAIL, REFER TO M&F SCHEDULE FOR TYPE DETAILS
HS	HAND SOAP DISPENSER
HSP	HYDRAULIC SERVICES PIT
HTG-XX	HEEL GUARD TRENCH GRATE, REFER TO M&F SCHEDULE FOR TYPE DETAILS
HV	HIGH VOLTAGE
IJ	ISOLATION JOINT
INS-XX	INSULATION TYPE, REFER TO M&F SCHEDULE FOR TYPE DETAILS.
IDM	INSPECTION OPENING SITE
KJ	KEY JOINT
KR	KERB RAIL
KS	SECURITY KEY SWITCH
LB	LIFTING BEAM
LAB-XX	LADDER BRACKET, REFER TO M&F SCHEDULE FOR TYPE DETAILS
LEB	LIFT CALL BOLLARD
LCC	LIFT CONTROL CABINET
LF-XX	LIGHT FITTING, REFER TO ELECTRICAL ENGINEERS SCHEDULES FOR TYPE DETAILS
LFLU-XX	LANDSCAPE FURNITURE/FITTING, REFER TO LANDSCAPE FF&E SCHEDULE
LF/R	LIGHT FITTING - RECESSED, REFER TO ELECTRICAL ENGINEERS SCHEDULES FOR TYPE DETAILS
LG	LEAF/HAIL GUARD, REFER TO M&F SCHEDULE FOR TYPES DETAILS.
LHP	LADDER HOOK POINT
LO-XX	LOCKER, REFER TO FF&E SCHEDULE FOR DETAILS
LP-XX	LIGHT POLE, REFER TO ELECTRICAL ENGINEERS SCHEDULES FOR TYPE DETAILS
LPP	LIFT SHAFT PUMP OUT POINT
LPD-XX	LIGHT POLE DOUBLE, REFER TO ELECTRICAL ENGINEERS SCHEDULES FOR TYPE DETAILS.
LV	LOW VOLTAGE
LV-XX	LOUVER, REFER TO M&F SCHEDULE FOR TYPE DETAILS
MCB	MECHANICAL CABINET / BOARD
MDB	MAIN DISTRIBUTION BOARD
MFG	MANUAL FARE GATE
MH	MANHOLE
MR-XX	MIRROR, REFER TO M&F SCHEDULE FOR TYPE DETAILS
MM	MINE FIRE PANEL
MJ	MOVEMENT JOINT
MS	MOTION SENSOR
MW	MATWELL
NOM	NOMINAL
NTS	NOT TO SCALE
O/A	OVERALL
OF-XX	OVERFLOW / SPITTER
OLE	OVERHEAD LINE EQUIPMENT
OHW	OVERHEAD WIRES
PTEL	PUBLIC TELEPHONE
PA	PUBLIC ANNOUNCEMENT (PA) SERVICES PIT
PB	PINBOARD
PC	PRECAST CONCRETE, REFER TO M&F SCHEDULE FOR TYPE DETAILS
PFC	PARALLEL FLANGE CHANNEL
PID	PASSENGER INFORMATION DISPLAY UNIT
PIM	PASSENGER INFORMATION MODULE
PIR	PASSIVE INFRARED
PMJ	PAVING MOVEMENT JOINTS. TO BE INSTALLED AT MAX. 5m CENTRES, MAXIMUM AREA 16m2 THROUGHOUT PLATFORM PAVING IN ACCORDANCE WITH ARCHITECTURAL SPECIFICATION
PPR	PUBLIC PLACE RECYCLING BINS, REFER TO FF&E SCHEDULE FOR TYPE DETAILS
PPT	PHONE POINTS (TERMINATION)
PR	PRINTER (BY OTHERS)
PS	PRIORITY SEAT
PSP	PASSENGER SERVICES PANEL SUITE
PSHP	PRINCIPAL SHARED PATH
PT-XX	PAINT FINISH TYPE, REFER TO M&F SCHEDULE FOR TYPE DETAILS
PTD	PAPER TOWEL DISPENSER
P/T	PHONE, TAXI
RB	ROLLER BLIND
RC	RIDGE CAPPING, REFER TO M&F SCHEDULE FOR TYPE DETAILS
RD	ROLLER DOOR
RS-XX	ROOF FINISH, REFER M&F SCHEDULE FOR TYPE DETAILS.
RH	RAINWATER HEAD, REFER M&F SCHEDULE FOR TYPE DETAILS.
RHS	RECTANGULAR HOLLOW SECTION
RL	RELATIVE LEVEL (TO AUSTRALIAN HEIGHT DATUM SURVEY POINT - AHD)
SAFE	SAFE
SB	VEHICULAR SPEED BUMP
SC-XX	SCREENING, REFER TO M&F SCHEDULE FOR TYPE DETAILS
SCP	SMART CARD PROCESSOR
SD	STORMWATER DRAIN
SDC	SHARPS DISPOSAL CONTAINER
SDJ	SAW DOWELLED JOINT
SDU	SANITARY DISPOSAL UNIT
SE	SEALANT
SEA-XX	PASSENGER SEAT TYPE
SER	SIGNALLING EQUIPMENT ROOM
SF	SOAKER FLASHING
SH	SHELF
SHS	SQUARE HOLLOW SECTION
SJ	SLAB JOINT
SM-3	3 CAR TRAIN STOPPING MARK. REFER TO SCHEDULE FOR DETAILS
SM-6	6 CAR TRAIN STOPPING MARK. REFER TO SCHEDULE FOR DETAILS
SMSB	SITE MAIN SWITCHBOARD
SN-XX	STAIR NOSING, REFER TO M&F SCHEDULE FOR DETAILS
SNK	SINK STAINLESS STEEL
SP	SIGNALS PIT
SPC	SUMP PIT CHAMBER
SPS	STORMWATER PUMP STATION CONTROL PANEL
SPV	SUMP PIT VALVE BOX
SS	STAINLESS STEEL 316 GRADE UNO
SSL	STRUCTURAL SLAB LEVEL
SU	SUMP
SW	STORMWATER
SWG	STORMWATER GULLY
SWGp	STORMWATER GULLY PIT AND TRENCH GRATE
SWP	STORMWATER PIT
T	TO BE CONFIRMED
TBC	TREE GRATE
TG	TREE GRATE

TGSI-XX	TACTILE GROUND SURFACE INDICATORS TILE, REFER TO M&F SCHEDULE FOR TYPE DETAILS
TOC	TOP OF CONCRETE
TOW	TOP OF WALL
TPL-XX	THRESHOLD PLATE, REFER TO M&F SCHEDULE FOR TYPE DETAILS
TRH-XX	TOILET ROLL HOLDER, REFER TO FF&E SCHEDULE FOR TYPE DETAILS
TYP	TYPICAL
UGJ	UNDER GROUND
UA	UNEQUAL ANGLE
UB	UNIVERSAL BEAM
UF	UNDER FLASHING
UNO	UNLESS NOTED OTHERWISE
VJ	VERTICAL JOINT
VM	VENDING MACHINE
WB	WHITEBOARD
WC-XX	WC PAN, REFER TO FF&E SCHEDULE FOR TYPE DETAILS
WCWS	WHEELCHAIR WAITING SPACE
WN-XX	WINDOWS, REFER TO WINDOW SCHEDULE FOR TYPE DETAILS
WL-XX	WALL LINING/CLADDING, REFER TO M&F SCHEDULE FOR TYPE DETAILS
WM	WATER MAINS MANHOLE
WMP	WATER MAINS PIT
WP	WATER PIT
WPM	WATERPROOF MEMBRANE, REFER TO M&F SHCHEDULE FOR TYPE DETAILS
WS	WHEEL STOP
WT-XX	WALL TYPE, REFER TO WALL TYPE DRAWING DETAILS
XX	WHERE CODES NOTE "- XX" IN LIEU OF SPECIFIC NUMBER, THIS INDICATES MORE THAN ONE

PRINT IN COLOUR

**FOR INFORMATION**

REV	DATE	AMENDMENT	DSN	DRN	CHK	APP
A02	13.12.22	DEVELOPMENT APPLICATION	HAS	HAS	JPD	BH
A01	21.11.22	ISSUED FOR INTERMEDIATE DETAILED DESIGN	HAS	HAS	JPD	BH
A	21.07.22	ISSUED FOR REFERENCE DESIGN	HAS	HAS	JPD	IS
ORIG SIZE		AT ORIGINAL PLOT SIZE				
A1						
<p>This document must not be copied without PTA's written permission, and the contents thereof must not be imparted to a third party nor be used for any unauthorised purpose.</p>						



**ARMADALE LINE UPGRADE ALLIANCE**  
Innovation to Reality

VALIDATION	REFERENCES
SIGNATURE	SCALE
DATE	DATUM
DATE APPROVED	HORIZONTAL: PCG20 VERTICAL: AHD71

DESIGNED	HASSELL
DRAWN	HASSELL
CHECKED	J.P. DAVIES
APPROVED	B. HOY
DATE	21/07/22

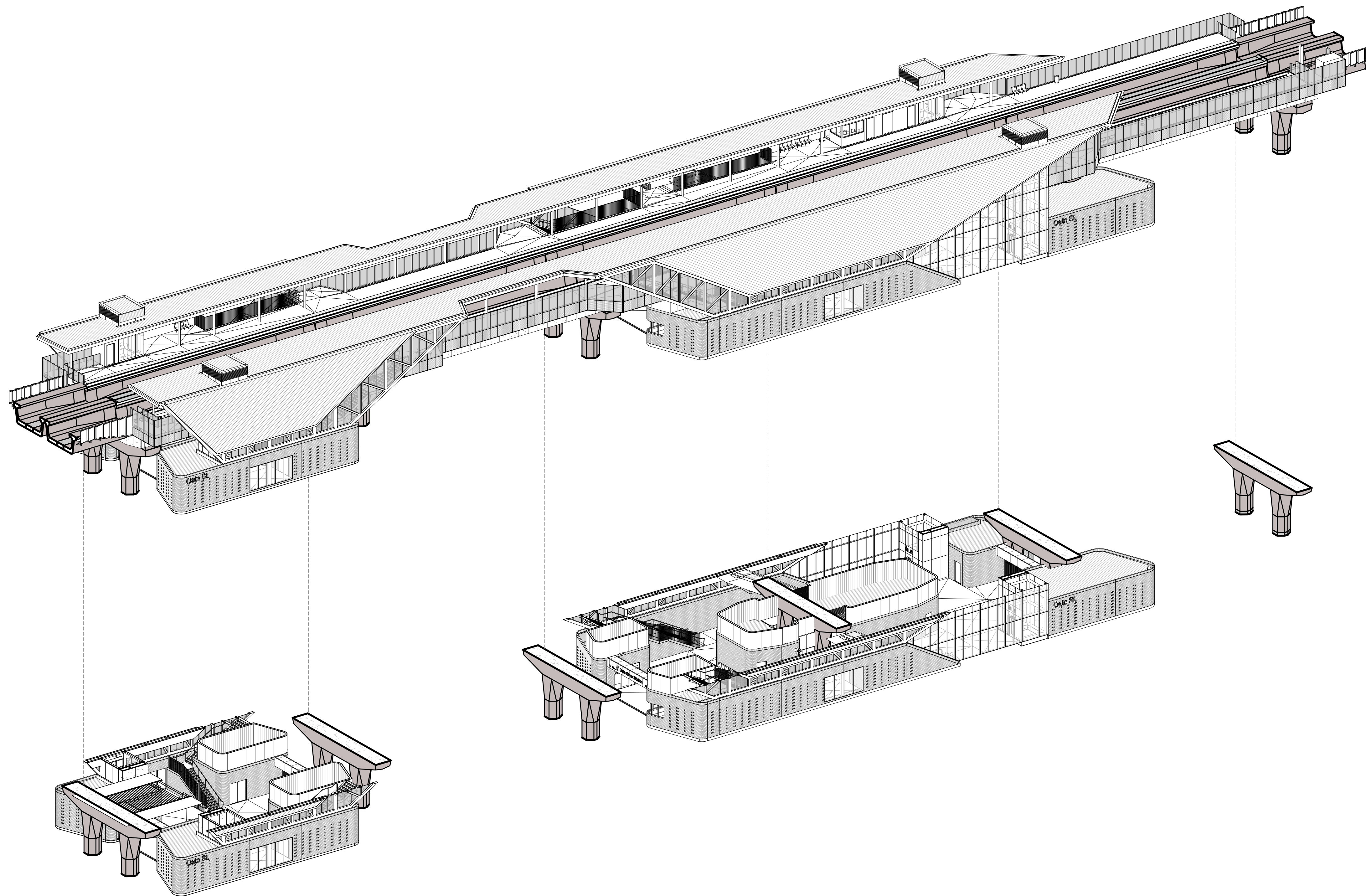


VICTORIA PARK TO CANNING  
LEVEL CROSSING REMOVAL

**OATS STREET - ARCHITECTURAL  
STATION WIDE  
ABBREVIATIONS**

PTA Drawing No: **04-A-71-AR0018** Rev: **A02**





PRINT IN COLOUR

**FOR INFORMATION**

REV	DATE	AMENDMENT	DSN	DRN	CHK	APP
A02	13.12.22	DEVELOPMENT APPLICATION	HAS	HAS	JPD	BH
A01	21.11.22	ISSUED FOR INTERMEDIATE DETAILED DESIGN	HAS	HAS	JPD	BH
A	21.07.22	ISSUED FOR REFERENCE DESIGN	HAS	HAS	JPD	IS

ORIG SIZE	SCALE
A1	AT ORIGINAL PLOT SIZE

This document must not be copied without PTA's written permission, and the contents thereof must not be imparted to a third party nor be used for any unauthorised purpose.

**ARMADALE LINE UPGRADE ALLIANCE**  
*Innovation to Reality*

Contractor No: LXR-P1-Z2-OT-SN-AR-DWG-00006

VALIDATION
SIGNATURE
DATE
DATE APPROVED

REFERENCES

SCALE
DATUM
HORIZONTAL: PCG20
VERTICAL: AHD71

DESIGNED	HASSELL
DRAWN	HASSELL
CHECKED	J.P. DAVIES
APPROVED	B. HOY
DATE	21/07/22

	VICTORIA PARK TO CANNING LEVEL CROSSING REMOVAL
<b>OATS STREET - ARCHITECTURAL STATION WIDE AXONOMETRIC</b>	
PTA Drawing No: 04-A-71-AR0020	Rev: A02





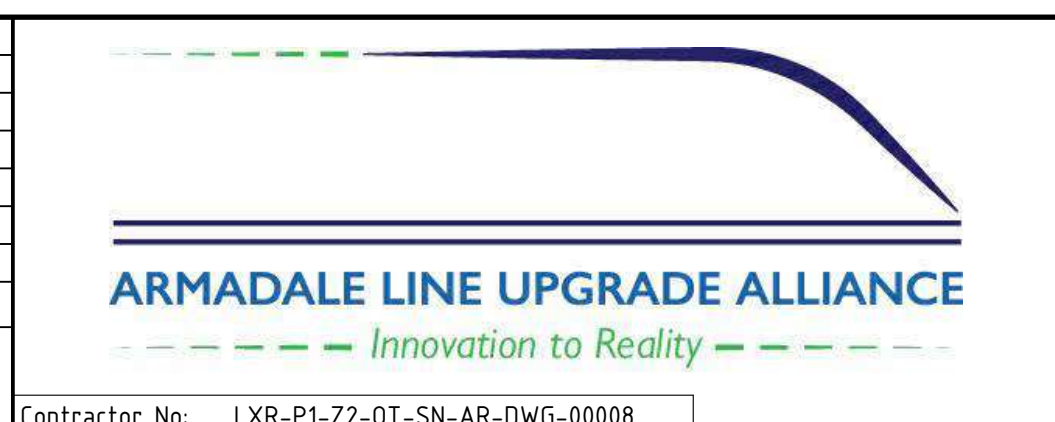
PRINT IN COLOUR

**FOR INFORMATION**

REV	DATE	AMENDMENT	DSN	DRN	CHK	APP
A02	13.12.22	DEVELOPMENT APPLICATION	HAS	HAS	JPD	BH
A01	21.11.22	ISSUED FOR INTERMEDIATE DETAILED DESIGN	HAS	HAS	JPD	BH
A	21.07.22	ISSUED FOR REFERENCE DESIGN	HAS	HAS	JPD	IS

ORIG SIZE	0 10 20 30 40 50 100mm	This document must not be copied without PTA's written permission, and the contents thereof must not be imparted to a third party nor be used for any unauthorised purpose.
A1	AT ORIGINAL PLOT SIZE	



VALIDATION

SIGNATURE

DATE

DATE APPROVED

REFERENCES

SCALE

DATUM

HORIZONTAL: PCG20

VERTICAL: AHD71

DESIGNED HASSELL

DRAWN HASSELL

CHECKED J.P. DAVIES

APPROVED B. HOY

DATE 21/07/22

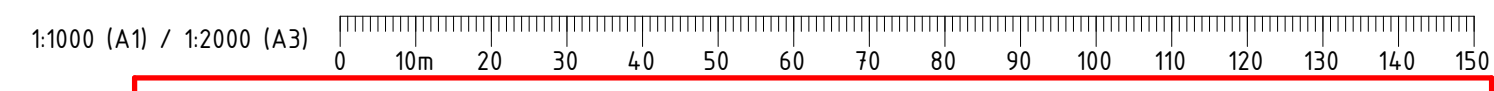
	VICTORIA PARK TO CANNING
	LEVEL CROSSING REMOVAL
OATS STREET - ARCHITECTURAL	
STATION WIDE	
RENDER IMAGE_INTERNAL VIEW	
PTA Drawing No: 04-A-71-AR0022	Rev: A02





**NOTES:**  
 1. BRIDGE VIADUCT STRUCTURE REFERENCE DESIGN ONLY IS SHOWN FOR COORDINATION PURPOSES, REFER STRUCTURAL ENGINEER'S DWG'S FOR ADDITIONAL DETAIL  
 2. REFER TO TRACK ENGINEER'S DRAWINGS FOR EXTENTS OF NEW RAIL AND STAGING, ALL VERTICAL AND HORIZONTAL TRACK DESIGN GEOMETRY AND PLATFORM EDGE LEVELS

**1** LOCATION PLAN 01  
 1 : 1000



PRINT IN COLOUR

**FOR INFORMATION**

REV	DATE	AMENDMENT	DSN	DRN	CHK	APP
A02	13.12.22	DEVELOPMENT APPLICATION	HAS	HAS	JPD	BH
A01	21.11.22	ISSUED FOR INTERMEDIATE DETAILED DESIGN	HAS	HAS	JPD	BH
A	21.07.22	ISSUED FOR REFERENCE DESIGN	HAS	HAS	JPD	IS

ORIG SIZE	A1
AT ORIGINAL PLOT SIZE	100mm

This document must not be copied without PTA's written permission, and the contents thereof must not be imparted to a third party nor be used for any unauthorised purpose.



VALIDATION  
 SIGNATURE  
 DATE  
 DATE APPROVED

REFERENCES

SCALE  
 1 : 1000  
 DATUM  
 HORIZONTAL: PCG20  
 VERTICAL: AHD71

DESIGNED HASSELL  
 DRAWN HASSELL  
 CHECKED J.P. DAVIES  
 APPROVED B. HOY  
 DATE 21/07/22

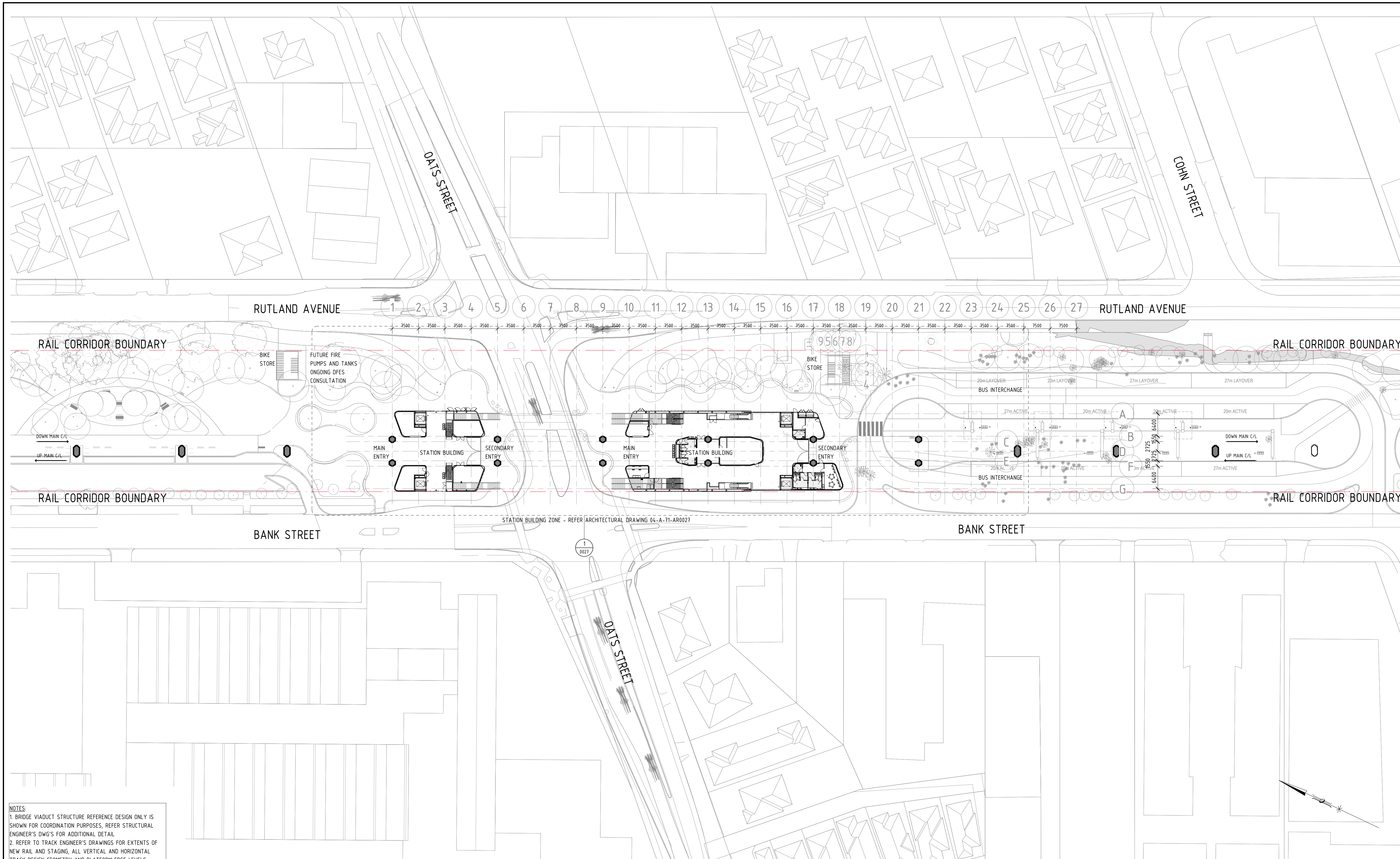
Government of Western Australia  
 Public Transport Authority

VICTORIA PARK TO CANNING  
 LEVEL CROSSING REMOVAL

**OATS STREET - ARCHITECTURAL  
 STATION WIDE  
 LOCALITY PLAN**

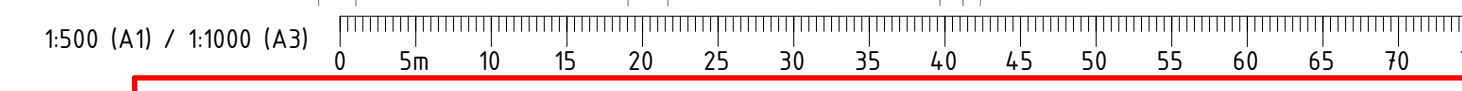
PTA Drawing No: **04-A-71-AR0025** Rev: **A02**





**NOTES:**  
 1. BRIDGE VIADUCT STRUCTURE REFERENCE DESIGN ONLY IS SHOWN FOR COORDINATION PURPOSES, REFER STRUCTURAL ENGINEER'S DWG'S FOR ADDITIONAL DETAIL  
 2. REFER TO TRACK ENGINEER'S DRAWINGS FOR EXTENTS OF NEW RAIL AND STAGING, ALL VERTICAL AND HORIZONTAL TRACK DESIGN GEOMETRY AND PLATFORM EDGE LEVELS

**1 SITE PLAN 01**  
 1 : 500



PRINT IN COLOUR

**FOR INFORMATION**

REV	DATE	AMENDMENT	DSN	DRN	CHK	APP
A02	13.12.22	DEVELOPMENT APPLICATION	HAS	HAS	JPD	BH
A01	21.11.22	ISSUED FOR INTERMEDIATE DETAILED DESIGN	HAS	HAS	JPD	BH
A	21.07.22	ISSUED FOR REFERENCE DESIGN	HAS	HAS	JPD	IS

ORIG SIZE: A1  
 AT ORIGINAL PLOT SIZE

This document must not be copied without PTA's written permission, and the contents thereof must not be imparted to a third party nor be used for any unauthorised purpose.

**ARMADALE LINE UPGRADE ALLIANCE**  
*Innovation to Reality*

VALIDATION  
 SIGNATURE  
 DATE  
 DATE APPROVED

REFERENCES

SCALE  
 1 : 500  
 DATUM  
 HORIZONTAL: PCG20  
 VERTICAL: AHD71

DESIGNED HASSELL  
 DRAWN HASSELL  
 CHECKED J.P. DAVIES  
 APPROVED B. HOY  
 DATE 21/07/22

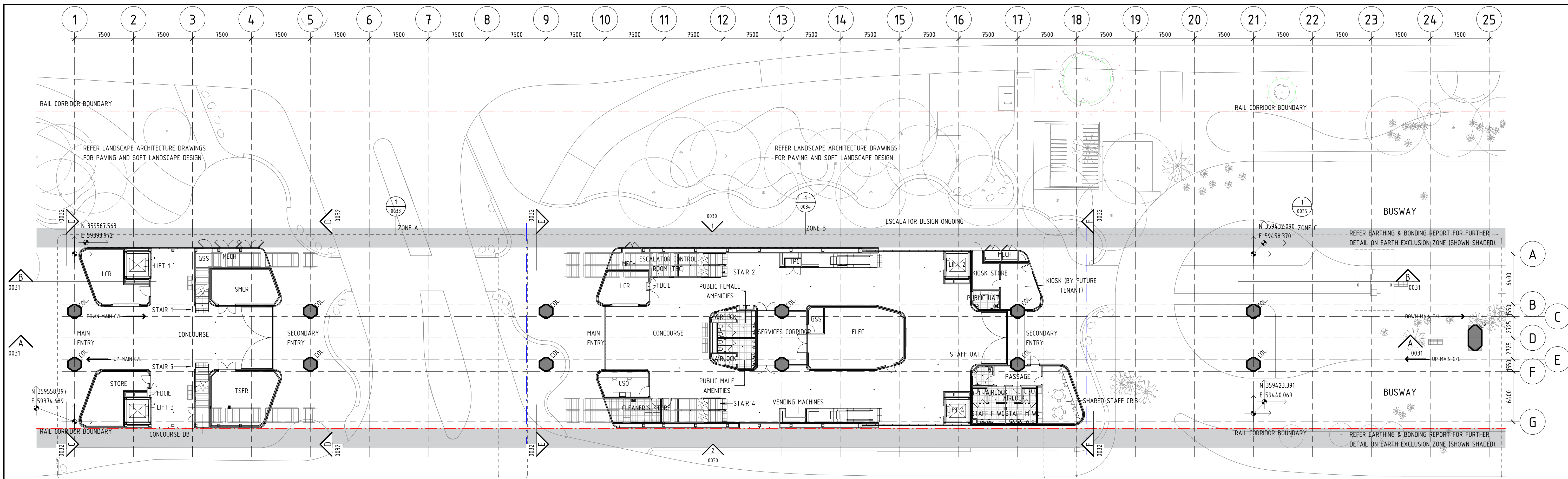
Government of Western Australia  
 Public Transport Authority

VICTORIA PARK TO CANNING  
 LEVEL CROSSING REMOVAL

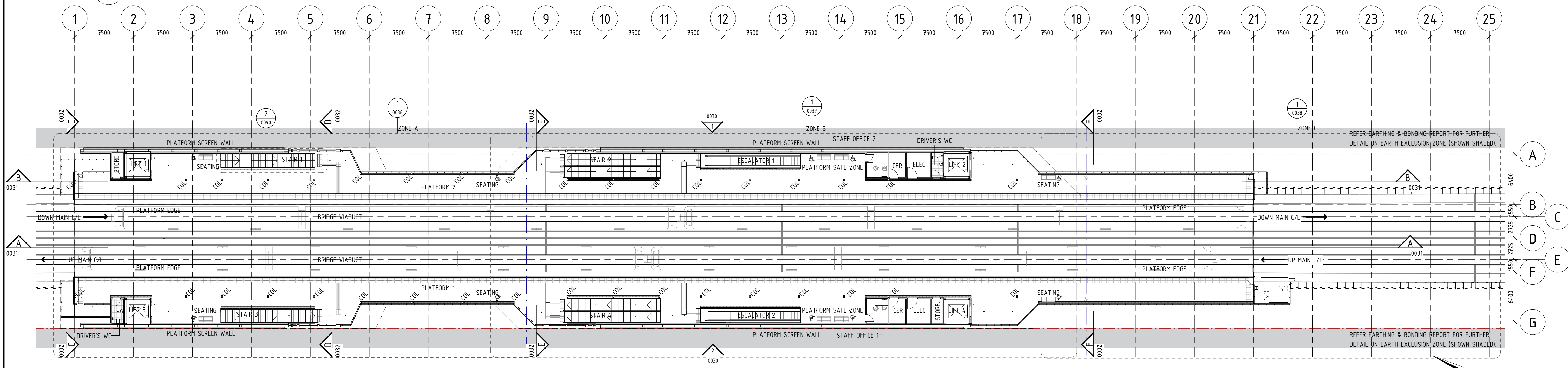
**OATS STREET - ARCHITECTURAL  
 STATION WIDE  
 SITE PLAN**

PTA Drawing No: **04-A-71-AR0026** Rev: **A02**





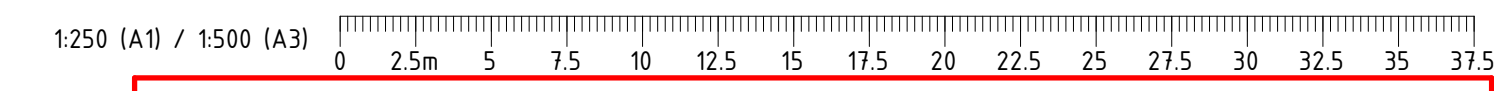
1 GA PLAN - CONCOURSE  
1 : 250



2 GA PLAN - PLATFORM  
1 : 250

**NOTES:**  
 1. BRIDGE VIADUCT STRUCTURE REFERENCE DESIGN ONLY IS SHOWN FOR COORDINATION PURPOSES, REFER STRUCTURAL ENGINEER'S DWG'S FOR ADDITIONAL DETAIL.  
 2. REFER TO TRACK ENGINEER'S DRAWINGS FOR EXTENTS OF NEW RAIL AND STAGING, ALL VERTICAL AND HORIZONTAL TRACK DESIGN GEOMETRY AND PLATFORM EDGE LEVELS.

**LEGEND:**  
 - - - - - INDICATES RAIL CORRIDOR BOUNDARY



PRINT IN COLOUR

**FOR INFORMATION**

Government of Western Australia  
Public Transport Authority

VICTORIA PARK TO CANNING  
LEVEL CROSSING REMOVAL

OATS STREET - ARCHITECTURAL  
GENERAL ARRANGEMENT  
GA PLANS  
PTA Drawing No: 04-A-71-AR0027 Rev: A02

REV	DATE	AMENDMENT	DSN	DRN	CHK	APP
A02	13.12.22	DEVELOPMENT APPLICATION	HAS	HAS	JPD	BH
A01	21.11.22	ISSUED FOR INTERMEDIATE DETAILED DESIGN	HAS	HAS	JPD	BH
A	21.07.22	ISSUED FOR REFERENCE DESIGN	HAS	HAS	JPD	IS

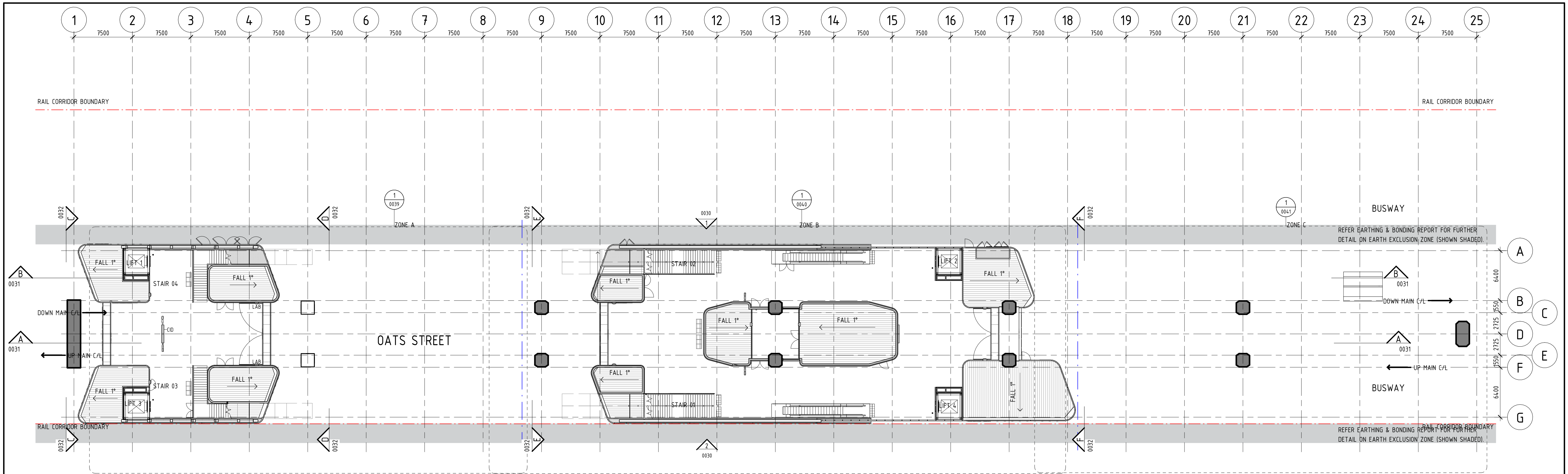
ORIG SIZE: A1  
 AT ORIGINAL PLOT SIZE: 0 10 20 30 40 50 100mm

This document must not be copied without PTA's written permission, and the contents thereof must not be imparted to a third party nor be used for any unauthorised purpose.

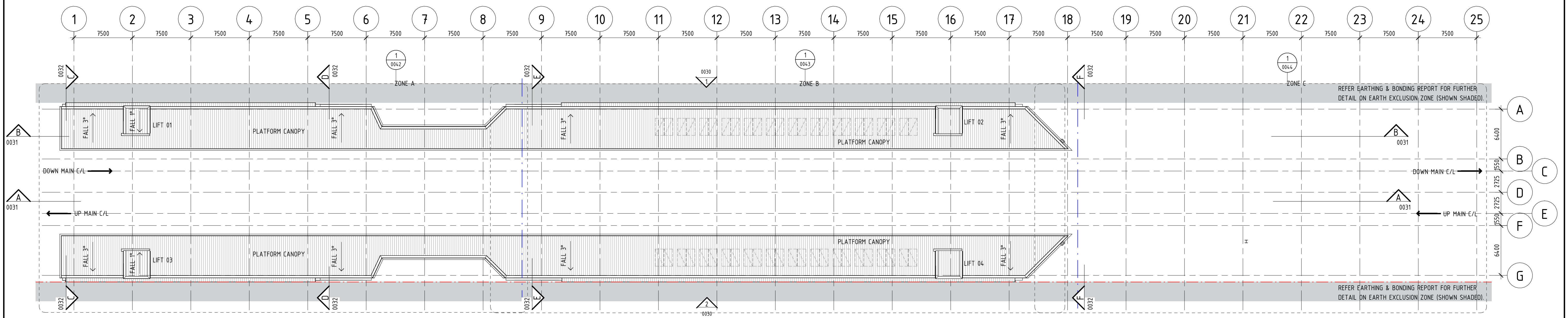
**ARMADALE LINE UPGRADE ALLIANCE**  
*Innovation to Reality*

VALIDATION	REFERENCES	SCALE	DESIGNED
SIGNATURE		1 : 250	HASSELL
DATE		DATUM	DRAWN HASSELL
DATE APPROVED		HORIZONTAL: PCG20	CHECKED J.P. DAVIES
		VERTICAL: AHD71	APPROVED B. HOY
			DATE 21/07/22





1 GA PLAN - CONCOURSE ROOF  
1 : 250



2 GA PLAN - PLATFORM ROOF  
1 : 250

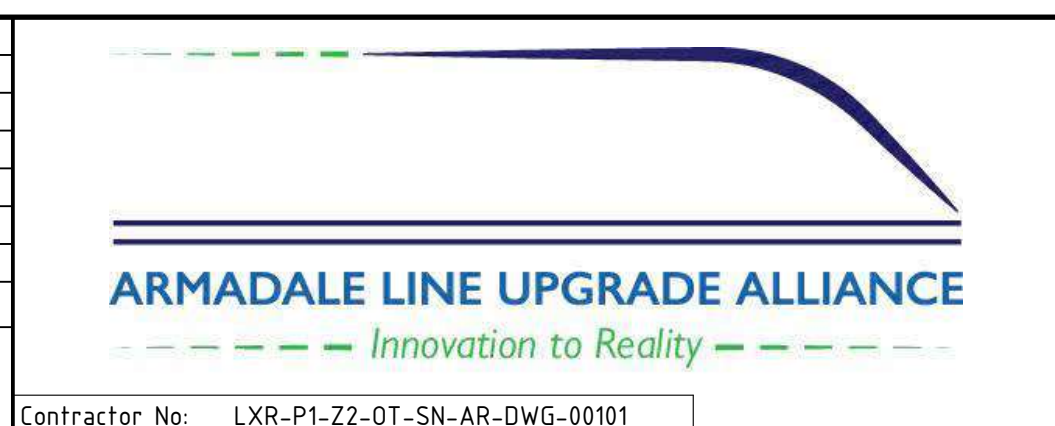
LEGEND  
--- INDICATES RAIL CORRIDOR BOUNDARY

1:250 (A1) / 1:500 (A3) 0 2.5m 5 7.5 10 12.5 15 17.5 20 22.5 25 27.5 30 32.5 35 37.5

PRINT IN COLOUR

FOR INFORMATION

A02	13.12.22	DEVELOPMENT APPLICATION	HAS	HAS	JPD	BH	
A01	21.11.22	ISSUED FOR INTERMEDIATE DETAILED DESIGN	HAS	HAS	JPD	BH	
A	21.07.22	ISSUED FOR REFERENCE DESIGN	HAS	HAS	JPD	IS	
REV	DATE	AMENDMENT	DSN	DRN	CHK	APP	
ORIG SIZE	0 10 20 30 40 50 100mm		This document must not be copied without PTA's written permission, and the contents thereof must not be imparted to a third party nor be used for any unauthorised purpose.				
A1	AT ORIGINAL PLOT SIZE		Contractor No: LXR-P1-22-OT-SN-AR-DWG-00101				



VALIDATION  
SIGNATURE  
DATE  
DATE APPROVED

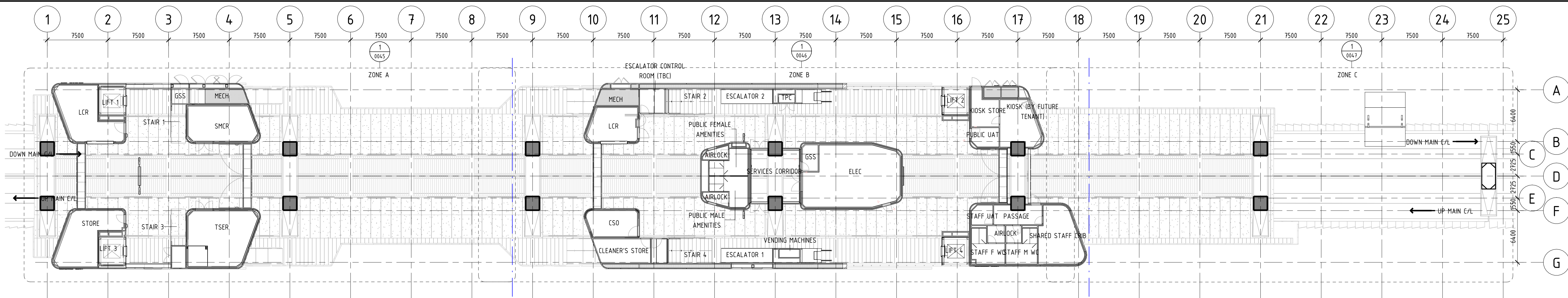
REFERENCES

SCALE  
1 : 250  
DATUM  
HORIZONTAL: PCG20  
VERTICAL: AHD71

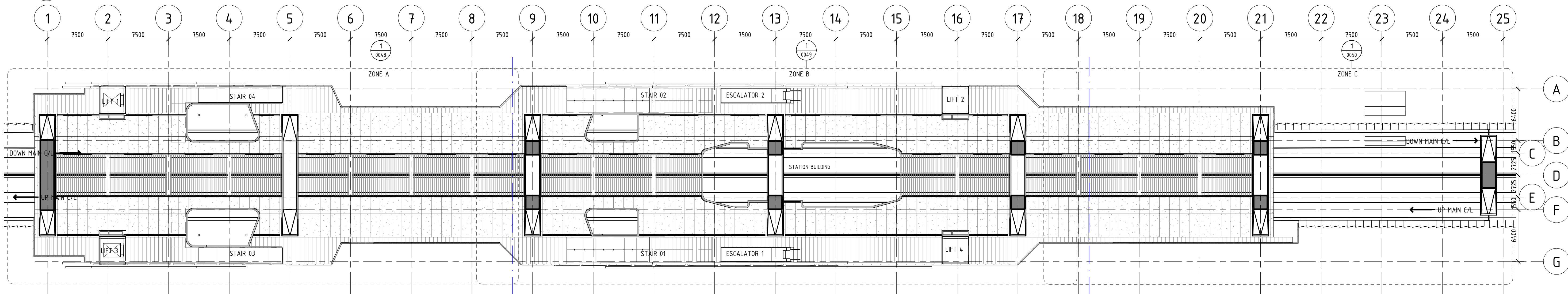
DESIGNED HASSELL  
DRAWN HASSELL  
CHECKED J.P. DAVIES  
APPROVED B. HOY  
DATE 21/07/22

Government of Western Australia  
Public Transport Authority  
VICTORIA PARK TO CANNING  
LEVEL CROSSING REMOVAL  
OATS STREET - ARCHITECTURAL  
GENERAL ARRANGEMENT  
GA ROOF PLANS  
PTA Drawing No: 04-A-71-AR0028 Rev: A02

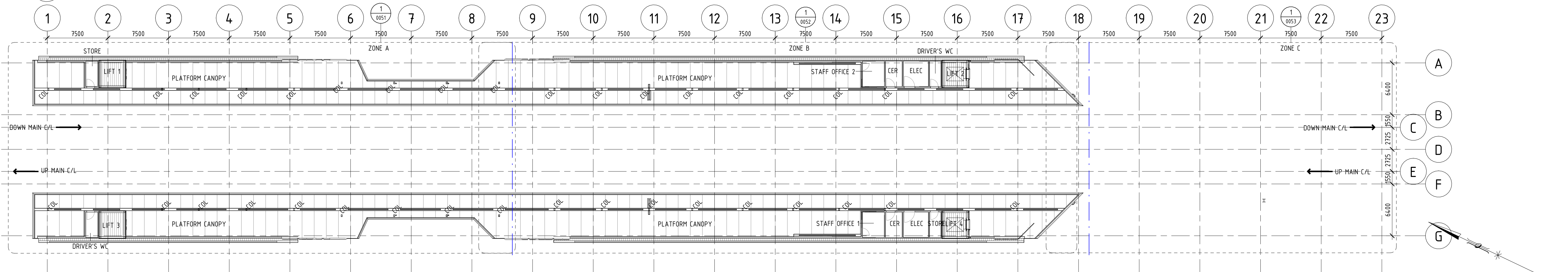




1 RCP - GA - CONCOURSE  
0030 1: 250

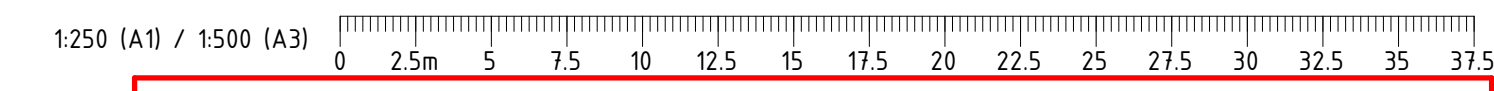


2 RCP - GA - VIADUCT SOFFIT  
0030 1: 250



3 RCP - GA - PLATFORM  
0030 1: 250

LEGEND:  
- - - INDICATES RAIL CORRIDOR BOUNDARY



PRINT IN COLOUR

FOR INFORMATION

REV	DATE	AMENDMENT	DSN	DRN	CHK	APP
A02	13.12.22	DEVELOPMENT APPLICATION	HAS	HAS	JPD	BH
A01	21.11.22	ISSUED FOR INTERMEDIATE DETAILED DESIGN	HAS	HAS	JPD	BH
A	21.07.22	ISSUED FOR REFERENCE DESIGN	HAS	HAS	JPD	IS

ORIG SIZE A1  
AT ORIGINAL PLOT SIZE

This document must not be copied without PTA's written permission, and the contents thereof must not be imparted to a third party nor be used for any unauthorised purpose.

ARMADALE LINE UPGRADE ALLIANCE  
Innovation to Reality

VALIDATION  
SIGNATURE  
DATE  
DATE APPROVED

REFERENCES

SCALE  
1 : 250  
DATUM  
HORIZONTAL: PCG20  
VERTICAL: AHD71

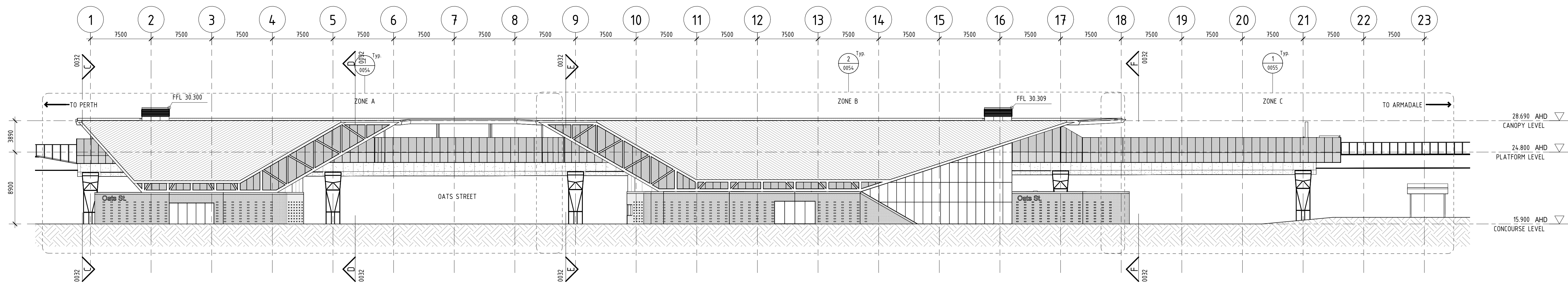
DESIGNED HASSELL  
DRAWN HASSELL  
CHECKED J.P. DAVIES  
APPROVED B. HOY  
DATE 21/07/22

Government of Western Australia  
Public Transport Authority

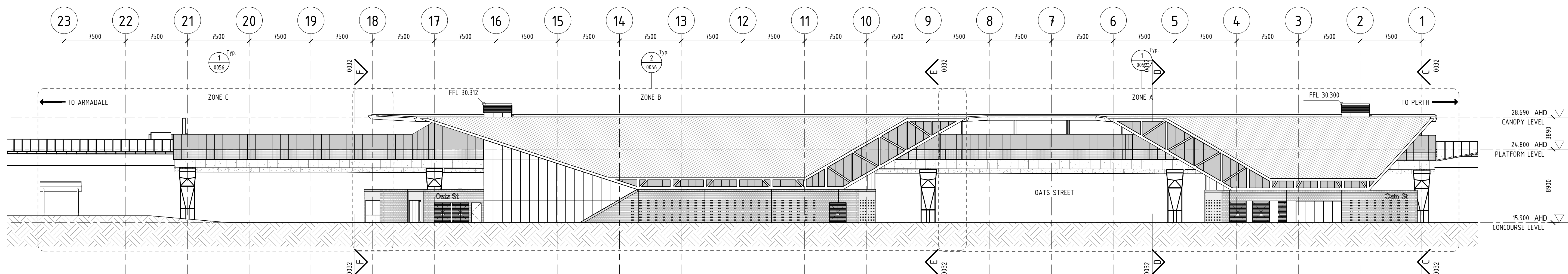
VICTORIA PARK TO CANNING  
LEVEL CROSSING REMOVAL

OATS STREET - ARCHITECTURAL  
GENERAL ARRANGEMENT  
GA REFLECTED CEILING PLANS  
PTA Drawing No: 04-A-71-AR0029 Rev: A02

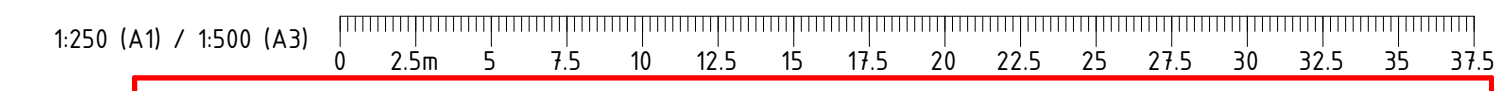




2 GA ELEVATION - WEST  
0027 1: 250



1 GA ELEVATION - EAST  
0027 1: 250



PRINT IN COLOUR

FOR INFORMATION

REV	DATE	AMENDMENT	DSN	DRN	CHK	APP
A02	13.12.22	DEVELOPMENT APPLICATION	HAS	HAS	JPD	BH
A01	21.11.22	ISSUED FOR INTERMEDIATE DETAILED DESIGN	HAS	HAS	JPD	BH
A	21.07.22	ISSUED FOR REFERENCE DESIGN	HAS	HAS	JPD	IS

ORIG SIZE	0 10 20 30 40 50 100mm	This document must not be copied without PTA's written permission, and the contents thereof must not be imparted to a third party nor be used for any unauthorised purpose.
A1	AT ORIGINAL PLOT SIZE	

ARMADALE LINE UPGRADE ALLIANCE  
Innovation to Reality

Contractor No: LXR-P1-22-OT-SN-AR-DWG-00103

VALIDATION
SIGNATURE
DATE
DATE APPROVED

REFERENCES
------------

SCALE	1 : 250
DATUM	
HORIZONTAL:	PCG20
VERTICAL:	AHD71

DESIGNED	HASSELL
DRAWN	HASSELL
CHECKED	J.P. DAVIES
APPROVED	B. HOY
DATE	21/07/22

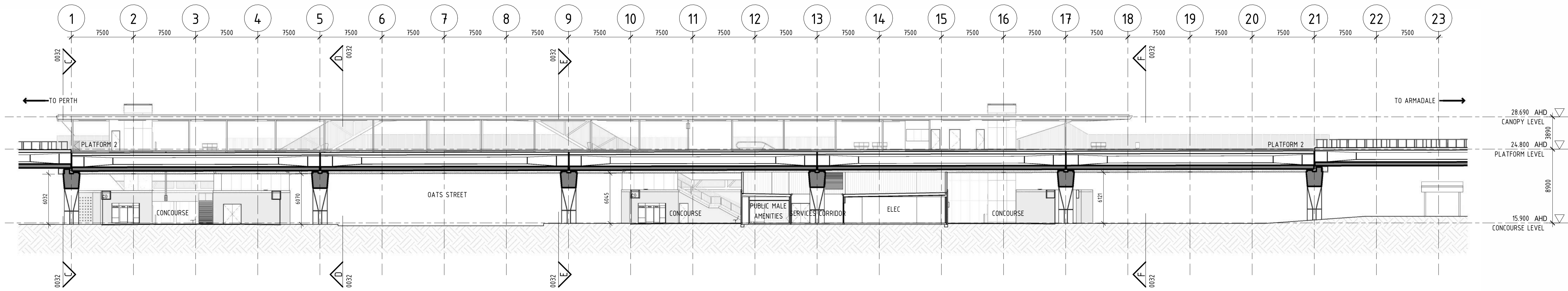
Government of Western Australia  
Public Transport Authority

VICTORIA PARK TO CANNING  
LEVEL CROSSING REMOVAL

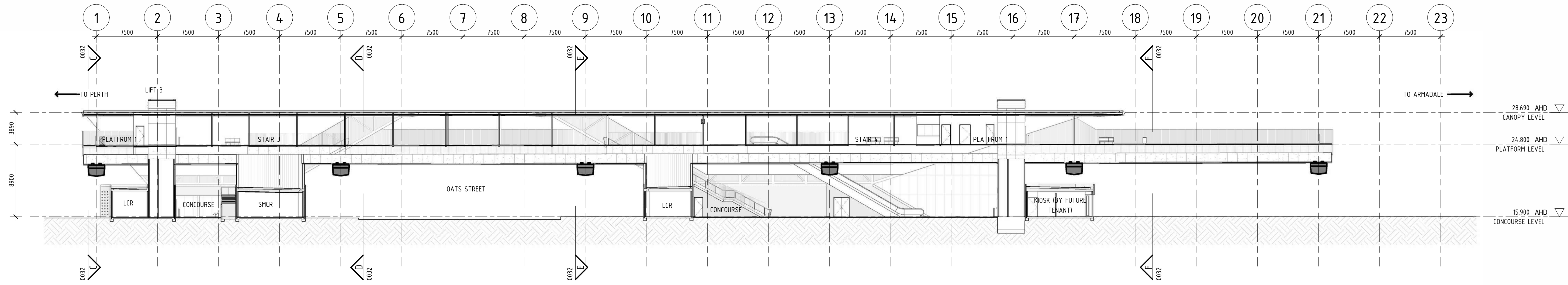
OATS STREET - ARCHITECTURAL  
GENERAL ARRANGEMENT  
GA ELEVATIONS

PTA Drawing No: 04-A-71-AR0030 Rev: A02





**A GA LONG SECTION A**  
0027 1 : 250



**B GA LONG SECTION B**  
0027 1 : 250

1:250 (A1) / 1:500 (A3) 0 2.5m 5 7.5 10 12.5 15 17.5 20 22.5 25 27.5 30 32.5 35 37.5

PRINT IN COLOUR

**FOR INFORMATION**

Government of Western Australia  
Public Transport Authority

VICTORIA PARK TO CANNING  
LEVEL CROSSING REMOVAL

**OATS STREET - ARCHITECTURAL  
GENERAL ARRANGEMENT  
GA LONG SECTIONS**

PTA Drawing No: **04-A-71-AR0031** Rev: **A02**

REV	DATE	AMENDMENT	DSN	DRN	CHK	APP
A02	13.12.22	DEVELOPMENT APPLICATION	HAS	HAS	JPD	BH
A01	21.11.22	ISSUED FOR INTERMEDIATE DETAILED DESIGN	HAS	HAS	JPD	BH
A	21.07.22	ISSUED FOR REFERENCE DESIGN	HAS	HAS	JPD	IS

ORIG SIZE **A1**

AT ORIGINAL PLOT SIZE

This document must not be copied without PTA's written permission, and the contents thereof must not be imparted to a third party nor be used for any unauthorised purpose.

ARMADALE LINE UPGRADE ALLIANCE  
Innovation to Reality

VALIDATION

SIGNATURE

DATE

DATE APPROVED

REFERENCES

SCALE

1 : 250

DATUM

HORIZONTAL: PCG20

VERTICAL: AHD71

DESIGNED HASSELL

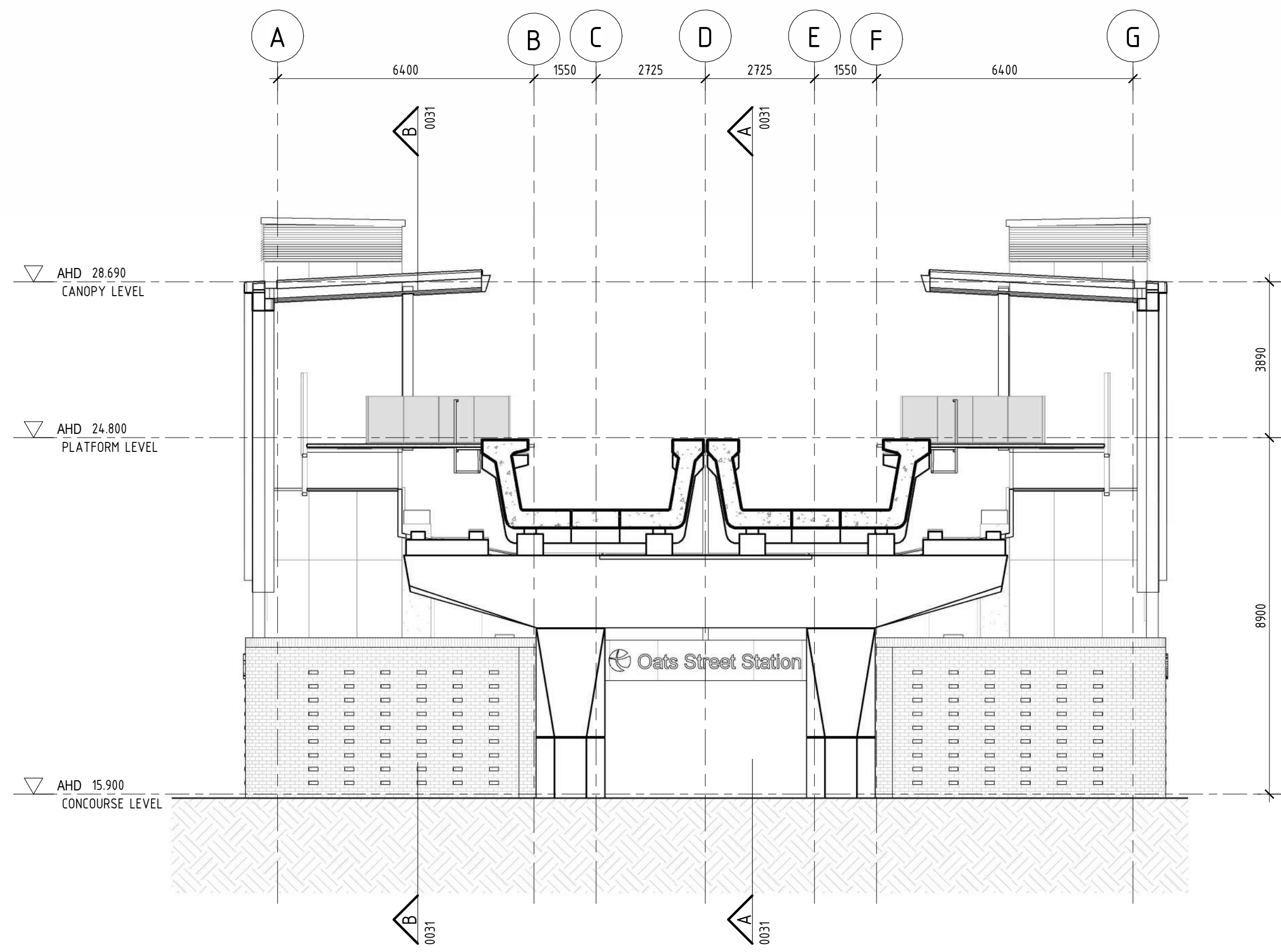
DRAWN HASSELL

CHECKED J.P. DAVIES

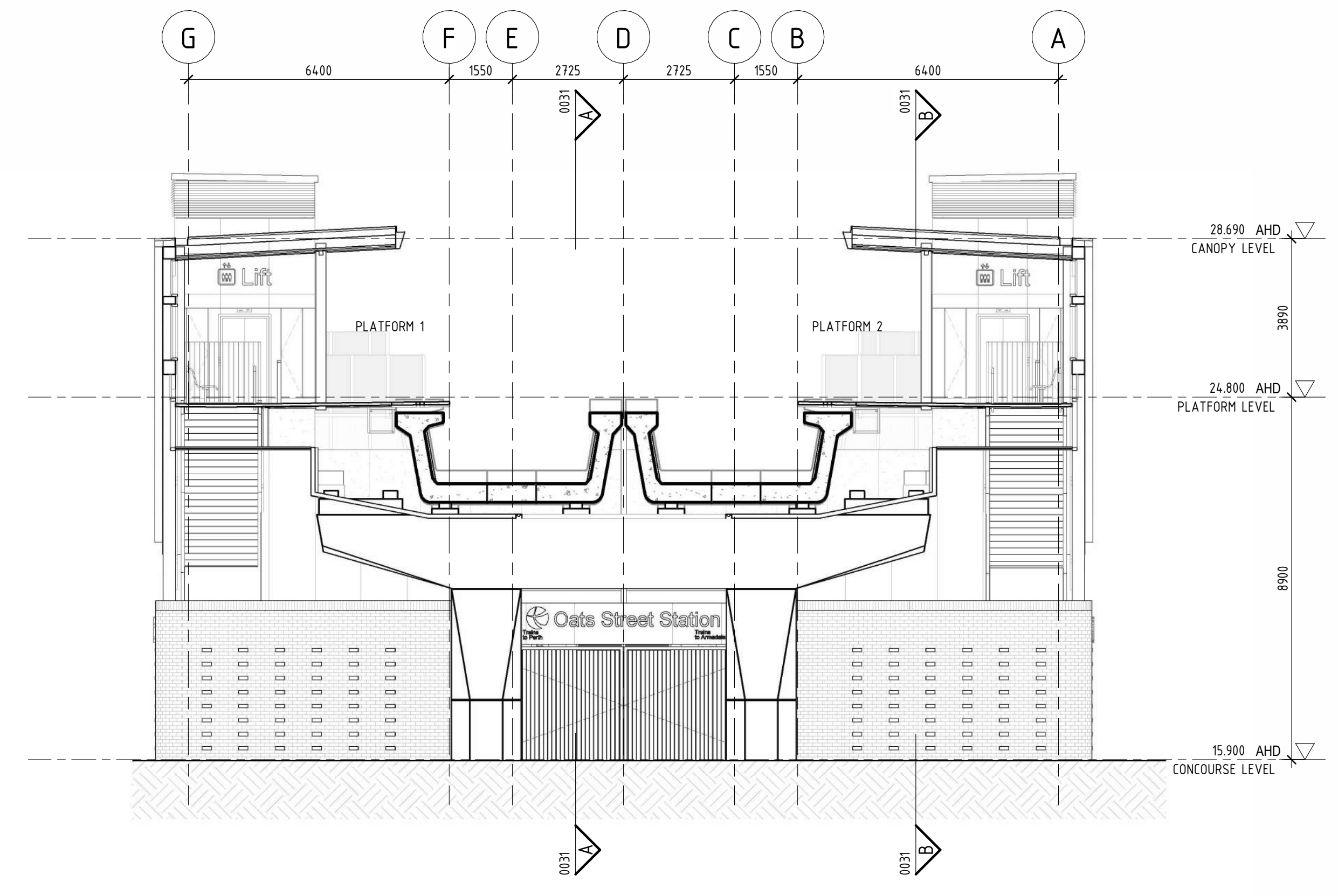
APPROVED B. HOY

DATE 21/07/22

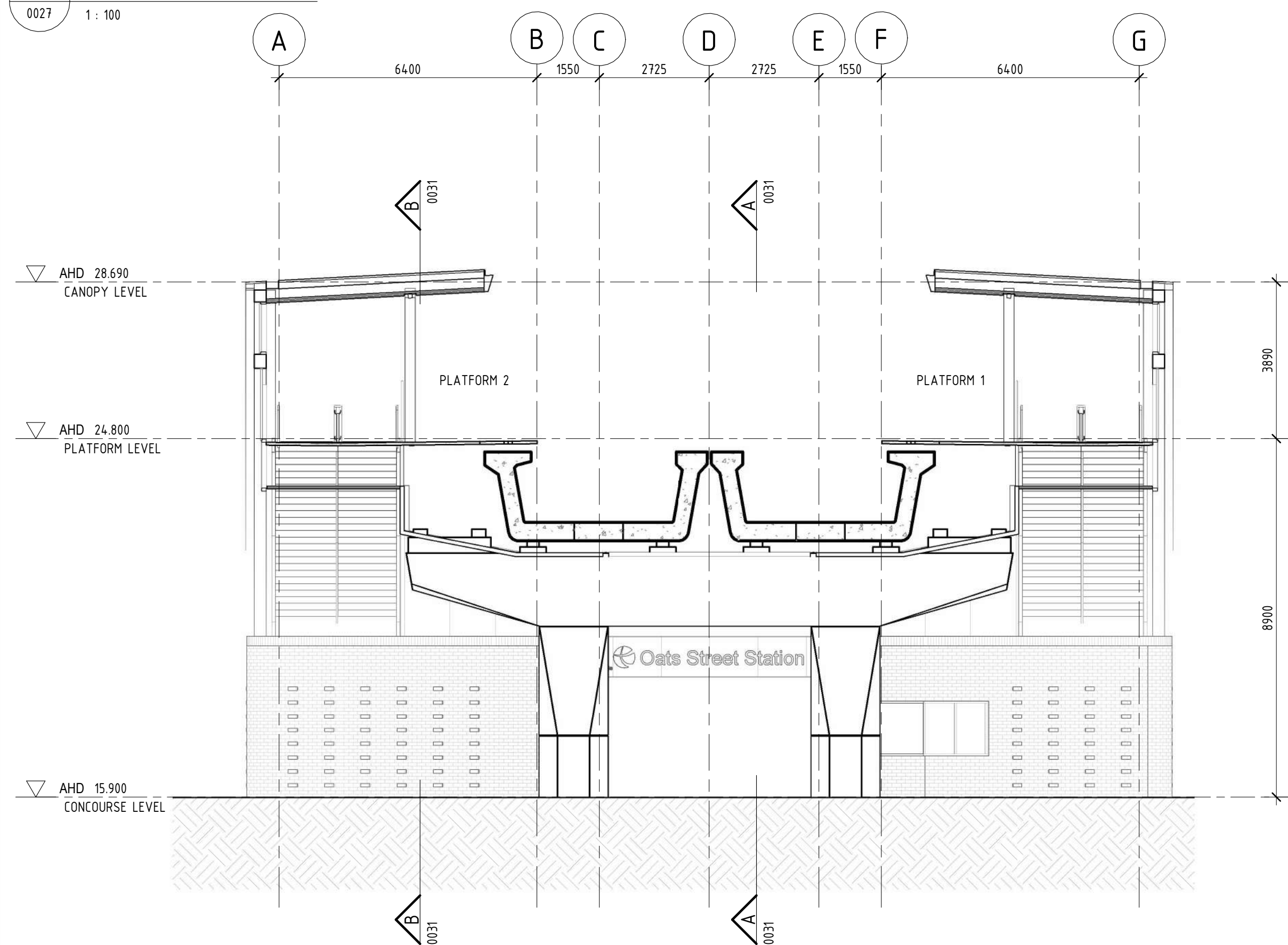




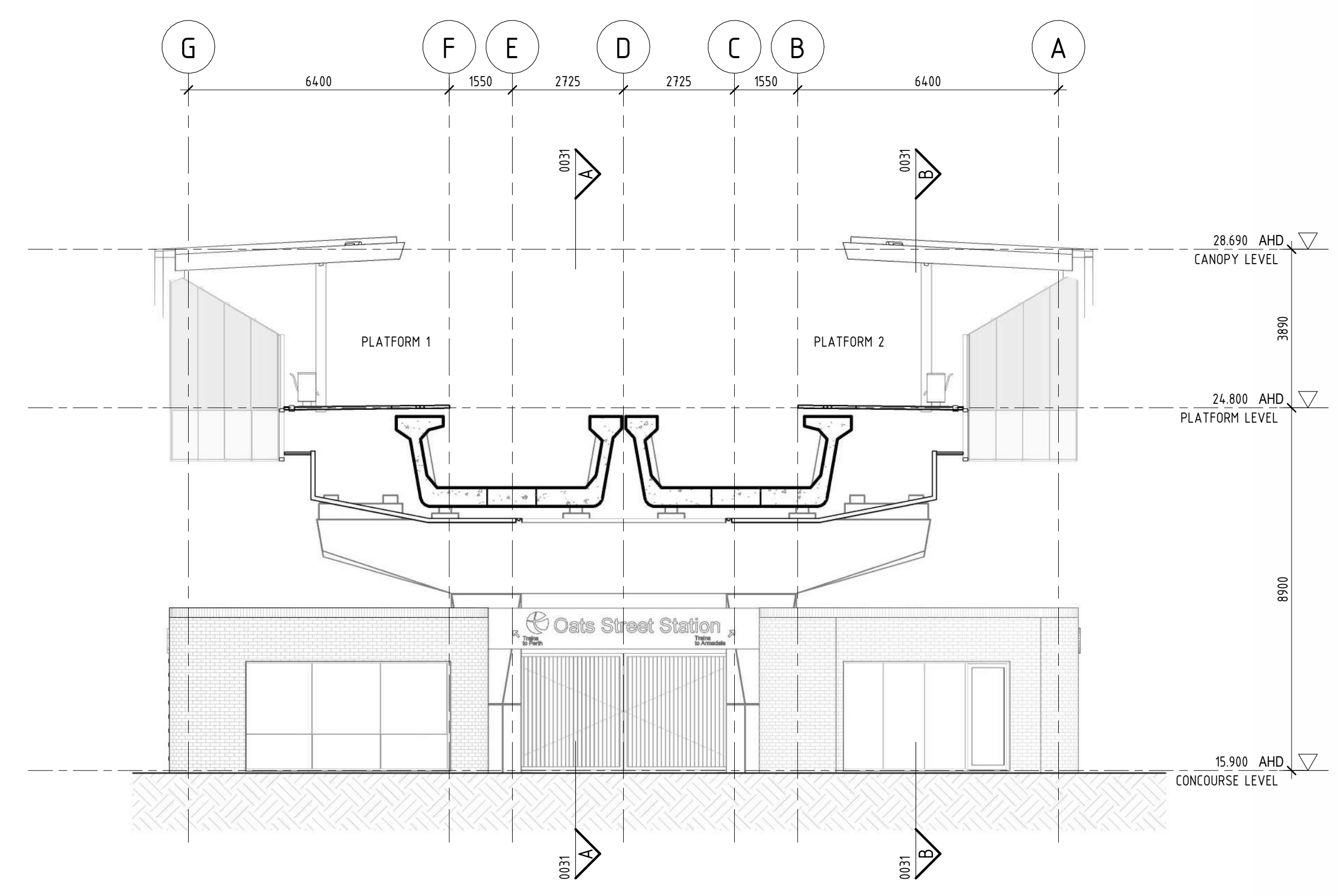
**C GA CROSS SECTION C**  
0027 1:100



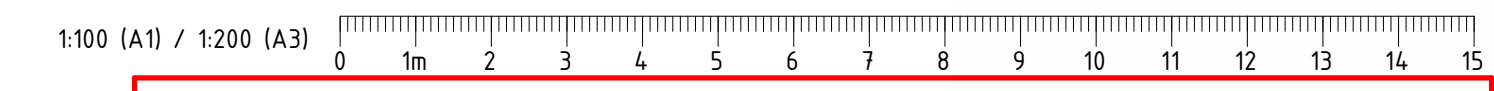
**D GA CROSS SECTION E**  
0027 1:100



**E GA CROSS SECTION D**  
0027 1:100



**F GA CROSS SECTION F**  
0027 1:100



PRINT IN COLOUR

**FOR INFORMATION**

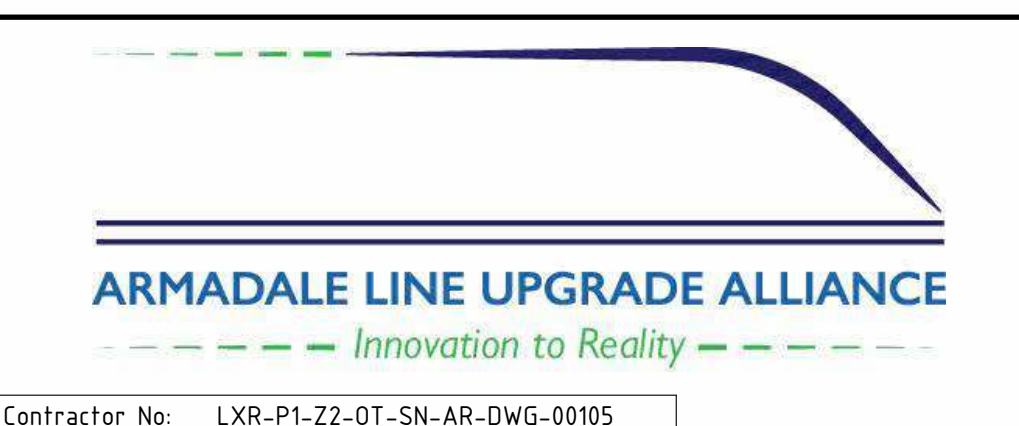
Government of Western Australia  
Public Transport Authority

VICTORIA PARK TO CANNING  
LEVEL CROSSING REMOVAL

**OATS STREET - ARCHITECTURAL  
GENERAL ARRANGEMENT  
GA CROSS SECTION**

PTA Drawing No: **04-A-71-AR0032** Rev: **A02**

A02	13.12.22	DEVELOPMENT APPLICATION	HAS	HAS	JPD	BH	
A01	21.11.22	ISSUED FOR INTERMEDIATE DETAILED DESIGN	HAS	HAS	JPD	BH	
A	21.07.22	ISSUED FOR REFERENCE DESIGN	HAS	HAS	JPD	IS	
REV	DATE	AMENDMENT	DSN	DRN	CHK	APP	
ORIG SIZE	0 10 20 30 40 50 100mm		This document must not be copied without PTA's written permission, and the contents thereof must not be imparted to a third party nor be used for any unauthorised purpose.				
<b>A1</b>	AT ORIGINAL PLOT SIZE		Contractor No: LXR-P1-Z2-OT-SN-AR-DWG-00105				



VALIDATION

SIGNATURE

DATE

DATE APPROVED

REFERENCES

SCALE

1 : 100

DATUM

HORIZONTAL: PCG20

VERTICAL: AHD71

DESIGNED HASSELL

DRAWN HASSELL

CHECKED J.P. DAVIES

APPROVED B. HOY

DATE 21/07/22