

## **Appendix G – Architectural Drawings for Carlisle Train Station (Plans, Elevations, Typical Sections) prepared by ALUA**



# VICTORIA PARK TO CANNING LEVEL CROSSING REMOVAL PROGRAM

## CARLISLE STATION - ARCHITECTURAL

### PACKAGE 1



PRINT IN COLOUR

FOR INFORMATION

REV	DATE	AMENDMENT	DSN	DRN	CHK	APP
A02	13.12.22	DEVELOPMENT APPLICATION	HAS	HAS	JPD	BH
A01	03.11.22	ISSUED FOR INTERMEDIATE DETAILED DESIGN	HAS	HAS	JPD	BH
A	04.08.22	ISSUED FOR REFERENCE DESIGN	HAS	HAS	JPD	IS
ORIG SIZE	0 10 20 30 40 50 100mm		AT ORIGINAL PLOT SIZE			
A1	This document must not be copied without PTA's written permission, and the contents thereof must not be imparted to a third party nor be used for any unauthorised purpose.					

ARMADALE LINE UPGRADE ALLIANCE  
Innovation to Reality

Contractor No: LXR-P1-Z1-CR-SN-AR-DWG-00001

VALIDATION
SIGNATURE
DATE
DATE APPROVED

REFERENCES
SCALE
DATUM
HORIZONTAL: PCG20
VERTICAL: AHD71

DESIGNED	HASSELL
DRAWN	HASSELL
CHECKED	J.P. DAVIES
APPROVED	B. HOY
DATE	04.08.2022

Government of Western Australia  
Public Transport Authority

VICTORIA PARK TO CANNING  
LEVEL CROSSING REMOVAL

CARLISLE - ARCHITECTURAL  
STATION WIDE  
COVER SHEET

PTA Drawing No: 04-A-69-AR0005 | Rev: A02



DRAWING LIST		
ALUA DRAWING NUMBER	PTA DRAWING NUMBER	SHEET NAME
LXR-P1-Z1-CR-SN-AR-DWG-00001	04-A-69-AR-0005	COVER SHEET
LXR-P1-Z1-CR-SN-AR-DWG-00002	04-A-69-AR-0006	DRAWING LIST
LXR-P1-Z1-CR-SN-AR-DWG-00003	04-A-69-AR-0007	SYMBOLOLOGY
LXR-P1-Z1-CR-SN-AR-DWG-00004	04-A-69-AR-0008	ABBREVIATIONS
LXR-P1-Z1-CR-SN-AR-DWG-00005	04-A-69-AR-0009	NOTES AND LEGENDS
LXR-P1-Z1-CR-SN-AR-DWG-00006	04-A-69-AR-0010	AXONOMETRIC
LXR-P1-Z1-CR-SN-AR-DWG-00007	04-A-69-AR-0011	ARCHITECTURAL VISUALISATION - EXTERNAL VIEW
LXR-P1-Z1-CR-SN-AR-DWG-00008	04-A-69-AR-0012	ARCHITECTURAL VISUALISATION - INTERNAL VIEW
LXR-P1-Z1-CR-SN-AR-DWG-00010	04-A-69-AR-0015	LOCALITY PLAN
LXR-P1-Z1-CR-SN-AR-DWG-00011	04-A-69-AR-0016	SITE PLAN
LXR-P1-Z1-CR-SN-AR-DWG-00100	04-A-69-AR-0017	GA PLANS
LXR-P1-Z1-CR-SN-AR-DWG-00101	04-A-69-AR-0018	GA ROOF PLANS
LXR-P1-Z1-CR-SN-AR-DWG-00102	04-A-69-AR-0019	GA REFLECTED CEILING PLANS
LXR-P1-Z1-CR-SN-AR-DWG-00103	04-A-69-AR-0020	GA ELEVATIONS
LXR-P1-Z1-CR-SN-AR-DWG-00104	04-A-69-AR-0021	GA LONG SECTIONS
LXR-P1-Z1-CR-SN-AR-DWG-00105	04-A-69-AR-0022	GA CROSS SECTIONS
LXR-P1-Z1-CR-SN-AR-DWG-00120	04-A-69-AR-0023	CONCOURSE PLAN - ZONE A
LXR-P1-Z1-CR-SN-AR-DWG-00121	04-A-69-AR-0024	CONCOURSE PLAN - ZONE B
LXR-P1-Z1-CR-SN-AR-DWG-00122	04-A-69-AR-0025	CONCOURSE PLAN - ZONE C
LXR-P1-Z1-CR-SN-AR-DWG-00123	04-A-69-AR-0026	PLATFORM PLAN - ZONE A
LXR-P1-Z1-CR-SN-AR-DWG-00124	04-A-69-AR-0027	PLATFORM PLAN - ZONE B
LXR-P1-Z1-CR-SN-AR-DWG-00125	04-A-69-AR-0028	PLATFORM PLAN - ZONE C
LXR-P1-Z1-CR-SN-AR-DWG-00130	04-A-69-AR-0029	CONCOURSE ROOF PLAN - ZONE A
LXR-P1-Z1-CR-SN-AR-DWG-00131	04-A-69-AR-0030	CONCOURSE ROOF PLAN - ZONE B
LXR-P1-Z1-CR-SN-AR-DWG-00133	04-A-69-AR-0032	PLATFORM ROOF PLAN - ZONE A
LXR-P1-Z1-CR-SN-AR-DWG-00134	04-A-69-AR-0033	PLATFORM ROOF PLAN - ZONE B
LXR-P1-Z1-CR-SN-AR-DWG-00140	04-A-69-AR-0035	REP - CONCOURSE - ZONE A
LXR-P1-Z1-CR-SN-AR-DWG-00141	04-A-69-AR-0036	REP - CONCOURSE - ZONE B
LXR-P1-Z1-CR-SN-AR-DWG-00143	04-A-69-AR-0038	REP - VIADUCT SOFFIT - ZONE A
LXR-P1-Z1-CR-SN-AR-DWG-00144	04-A-69-AR-0039	REP - VIADUCT SOFFIT - ZONE B
LXR-P1-Z1-CR-SN-AR-DWG-00145	04-A-69-AR-0040	REP - VIADUCT SOFFIT - ZONE C
LXR-P1-Z1-CR-SN-AR-DWG-00146	04-A-69-AR-0041	REP - PLATFORM - ZONE A
LXR-P1-Z1-CR-SN-AR-DWG-00147	04-A-69-AR-0042	REP - PLATFORM - ZONE B
LXR-P1-Z1-CR-SN-AR-DWG-00150	04-A-69-AR-0044	ELEVATIONS - STATION - WEST - SHEET 1
LXR-P1-Z1-CR-SN-AR-DWG-00151	04-A-69-AR-0045	ELEVATIONS - STATION - WEST - SHEET 2
LXR-P1-Z1-CR-SN-AR-DWG-00152	04-A-69-AR-0046	ELEVATIONS - STATION - EAST - SHEET 1
LXR-P1-Z1-CR-SN-AR-DWG-00153	04-A-69-AR-0047	ELEVATIONS - STATION - EAST - SHEET 2
LXR-P1-Z1-CR-SN-AR-DWG-00154	04-A-69-AR-0048	ELEVATIONS - NORTH AND SOUTH
LXR-P1-Z1-CR-SN-AR-DWG-00155	04-A-69-AR-0049	ELEVATIONS - BUILDING FACADES - SHEET 1
LXR-P1-Z1-CR-SN-AR-DWG-00156	04-A-69-AR-0050	ELEVATIONS - BUILDING FACADES - SHEET 2
LXR-P1-Z1-CR-SN-AR-DWG-00157	04-A-69-AR-0051	ELEVATIONS - BUILDING FACADES - SHEET 3
LXR-P1-Z1-CR-SN-AR-DWG-00158	04-A-69-AR-0052	ELEVATIONS - BUILDING FACADES - SHEET 4
LXR-P1-Z1-CR-SN-AR-DWG-00160	04-A-69-AR-0054	SECTIONS - LONG - SHEET 1
LXR-P1-Z1-CR-SN-AR-DWG-00161	04-A-69-AR-0055	SECTIONS - LONG - SHEET 2
LXR-P1-Z1-CR-SN-AR-DWG-00162	04-A-69-AR-0056	SECTIONS - LONG - SHEET 3
LXR-P1-Z1-CR-SN-AR-DWG-00163	04-A-69-AR-0057	SECTIONS - LONG - SHEET 4
LXR-P1-Z1-CR-SN-AR-DWG-00164	04-A-69-AR-0058	SECTIONS - CROSS - SHEET 1
LXR-P1-Z1-CR-SN-AR-DWG-00165	04-A-69-AR-0059	SECTIONS - CROSS - SHEET 2
LXR-P1-Z1-CR-SN-AR-DWG-00166	04-A-69-AR-0060	SECTIONS - CROSS - SHEET 3
LXR-P1-Z1-CR-SN-AR-DWG-00167	04-A-69-AR-0061	SECTIONS - CROSS - SHEET 4
LXR-P1-Z1-CR-SN-AR-DWG-00168	04-A-69-AR-0062	SECTIONS - CROSS - SHEET 5
LXR-P1-Z1-CR-SN-AR-DWG-00190	04-A-69-AR-0065	LIFT 1 PLANS AND ELEVATIONS
LXR-P1-Z1-CR-SN-AR-DWG-00191	04-A-69-AR-0066	LIFT 1 SECTIONS
LXR-P1-Z1-CR-SN-AR-DWG-00192	04-A-69-AR-0067	LIFT 2 PLANS AND ELEVATIONS
LXR-P1-Z1-CR-SN-AR-DWG-00193	04-A-69-AR-0068	LIFT 2 SECTIONS

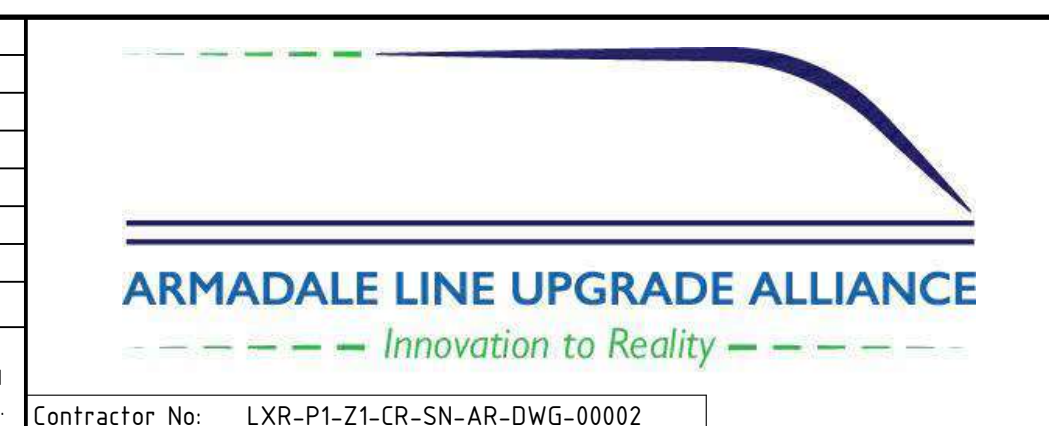
DRAWING LIST		
ALUA DRAWING NUMBER	PTA DRAWING NUMBER	SHEET NAME
LXR-P1-Z1-CR-SN-AR-DWG-00194	04-A-69-AR-0069	LIFT 3 PLANS AND ELEVATIONS
LXR-P1-Z1-CR-SN-AR-DWG-00195	04-A-69-AR-0070	LIFT 3 SECTIONS
LXR-P1-Z1-CR-SN-AR-DWG-00196	04-A-69-AR-0071	LIFT 4 PLANS AND ELEVATIONS
LXR-P1-Z1-CR-SN-AR-DWG-00197	04-A-69-AR-0072	LIFT 4 SECTIONS
LXR-P1-Z1-CR-SN-AR-DWG-00198	04-A-69-AR-0073	LIFT DETAILS - SHEET 1
LXR-P1-Z1-CR-SN-AR-DWG-00199	04-A-69-AR-0074	LIFT DETAILS - SHEET 2
LXR-P1-Z1-CR-SN-AR-DWG-00210	04-A-69-AR-0080	STAIR 1 PLANS
LXR-P1-Z1-CR-SN-AR-DWG-00211	04-A-69-AR-0081	STAIR 1 ELEVATIONS
LXR-P1-Z1-CR-SN-AR-DWG-00212	04-A-69-AR-0082	STAIR 1 SECTIONS
LXR-P1-Z1-CR-SN-AR-DWG-00213	04-A-69-AR-0083	STAIR 2 PLANS
LXR-P1-Z1-CR-SN-AR-DWG-00214	04-A-69-AR-0084	STAIR 2 ELEVATIONS
LXR-P1-Z1-CR-SN-AR-DWG-00215	04-A-69-AR-0085	STAIR 2 SECTIONS
LXR-P1-Z1-CR-SN-AR-DWG-00216	04-A-69-AR-0086	EGRESS STAIR 1 PLANS
LXR-P1-Z1-CR-SN-AR-DWG-00217	04-A-69-AR-0087	EGRESS STAIR 1 SECTIONS
LXR-P1-Z1-CR-SN-AR-DWG-00218	04-A-69-AR-0088	EGRESS STAIR 1 ELEVATIONS
LXR-P1-Z1-CR-SN-AR-DWG-00219	04-A-69-AR-0089	EGRESS STAIR 2 PLANS
LXR-P1-Z1-CR-SN-AR-DWG-00220	04-A-69-AR-0090	EGRESS STAIR 2 SECTIONS
LXR-P1-Z1-CR-SN-AR-DWG-00221	04-A-69-AR-0091	EGRESS STAIR 2 ELEVATIONS
LXR-P1-Z1-CR-SN-AR-DWG-00225	04-A-69-AR-0092	STAIR DETAILS - SHEET 1
LXR-P1-Z1-CR-SN-AR-DWG-00226	04-A-69-AR-0093	STAIR DETAILS - SHEET 2
LXR-P1-Z1-CR-SN-AR-DWG-00227	04-A-69-AR-0094	STAIR DETAILS - SHEET 3
LXR-P1-Z1-CR-SN-AR-DWG-00230	04-A-69-AR-0097	BALUSTRADE DETAILS - SHEET 1
LXR-P1-Z1-CR-SN-AR-DWG-00235	04-A-69-AR-0100	SCREEN SETOUT AND DETAILS - SHEET 1
LXR-P1-Z1-CR-SN-AR-DWG-00239	04-A-69-AR-0104	SCREEN SETOUT AND DETAILS - SHEET 5
LXR-P1-Z1-CR-SN-AR-DWG-00245	04-A-69-AR-0110	WALL TYPES - SHEET 1
LXR-P1-Z1-CR-SN-AR-DWG-00246	04-A-69-AR-0111	WALL TYPES - SHEET 2
LXR-P1-Z1-CR-SN-AR-DWG-00250	04-A-69-AR-0115	GLAZING SCHEDULE - SHEET 1
LXR-P1-Z1-CR-SN-AR-DWG-00251	04-A-69-AR-0116	GLAZING SCHEDULE - SHEET 2
LXR-P1-Z1-CR-SN-AR-DWG-00255	04-A-69-AR-0120	DOOR SCHEDULE
LXR-P1-Z1-CR-SN-AR-DWG-00256	04-A-69-AR-0121	DOOR DETAILS - SHEET 1
LXR-P1-Z1-CR-SN-AR-DWG-00257	04-A-69-AR-0122	DOOR DETAILS - SHEET 2
LXR-P1-Z1-CR-SN-AR-DWG-00260	04-A-69-AR-0125	LOUVRE DETAILS - SHEET 1
LXR-P1-Z1-CR-SN-AR-DWG-00262	04-A-69-AR-0127	GATE DETAILS - SHEET 1
LXR-P1-Z1-CR-SN-AR-DWG-00265	04-A-69-AR-0130	ROLLER SHUTTER DETAILS
LXR-P1-Z1-CR-SN-AR-DWG-00270	04-A-69-AR-0135	CONSTRUCTION DETAILS - SHEET 1
LXR-P1-Z1-CR-SN-AR-DWG-00271	04-A-69-AR-0136	CONSTRUCTION DETAILS - SHEET 2
LXR-P1-Z1-CR-SN-AR-DWG-00272	04-A-69-AR-0137	CONSTRUCTION DETAILS - SHEET 3
LXR-P1-Z1-CR-SN-AR-DWG-00273	04-A-69-AR-0138	CONSTRUCTION DETAILS - SHEET 4
LXR-P1-Z1-CR-SN-AR-DWG-00274	04-A-69-AR-0139	CONSTRUCTION DETAILS - SHEET 5
LXR-P1-Z1-CR-SN-AR-DWG-00275	04-A-69-AR-0140	CONSTRUCTION DETAILS - SHEET 6
LXR-P1-Z1-CR-SN-AR-DWG-00276	04-A-69-AR-0141	CONSTRUCTION DETAILS - SHEET 7
LXR-P1-Z1-CR-SN-AR-DWG-00277	04-A-69-AR-0142	CONSTRUCTION DETAILS - SHEET 8
LXR-P1-Z1-CR-SN-AR-DWG-00278	04-A-69-AR-0143	CONSTRUCTION DETAILS - SHEET 9
LXR-P1-Z1-CR-SN-AR-DWG-00285	04-A-69-AR-0150	ROOM LAYOUT - WET AREAS - SHEET 1

99

PRINT IN COLOUR

FOR INFORMATION

REV	DATE	AMENDMENT	DSN	DRN	CHK	APP
A02	13.12.22	DEVELOPMENT APPLICATION	HAS	HAS	JPD	BH
A01	03.11.22	ISSUED FOR INTERMEDIATE DETAILED DESIGN	HAS	HAS	JPD	BH
A	04.08.22	ISSUED FOR REFERENCE DESIGN	HAS	HAS	JPD	IS
ORIG SIZE	AT ORIGINAL PLOT SIZE		This document must not be copied without PTA's written permission, and the contents thereof must not be imparted to a third party nor be used for any unauthorised purpose.			
A1	0 10 20 30 40 50 100mm		Contractor No: LXR-P1-Z1-CR-SN-AR-DWG-00002			



VALIDATION  
SIGNATURE  
DATE  
DATE APPROVED

REFERENCES

SCALE  
DATUM  
HORIZONTAL: PCG20  
VERTICAL: AHD71

DESIGNED HASSELL  
DRAWN HASSELL  
CHECKED J.P. DAVIES  
APPROVED B. HOY  
DATE 04.08.2022

Government of Western Australia  
Public Transport Authority

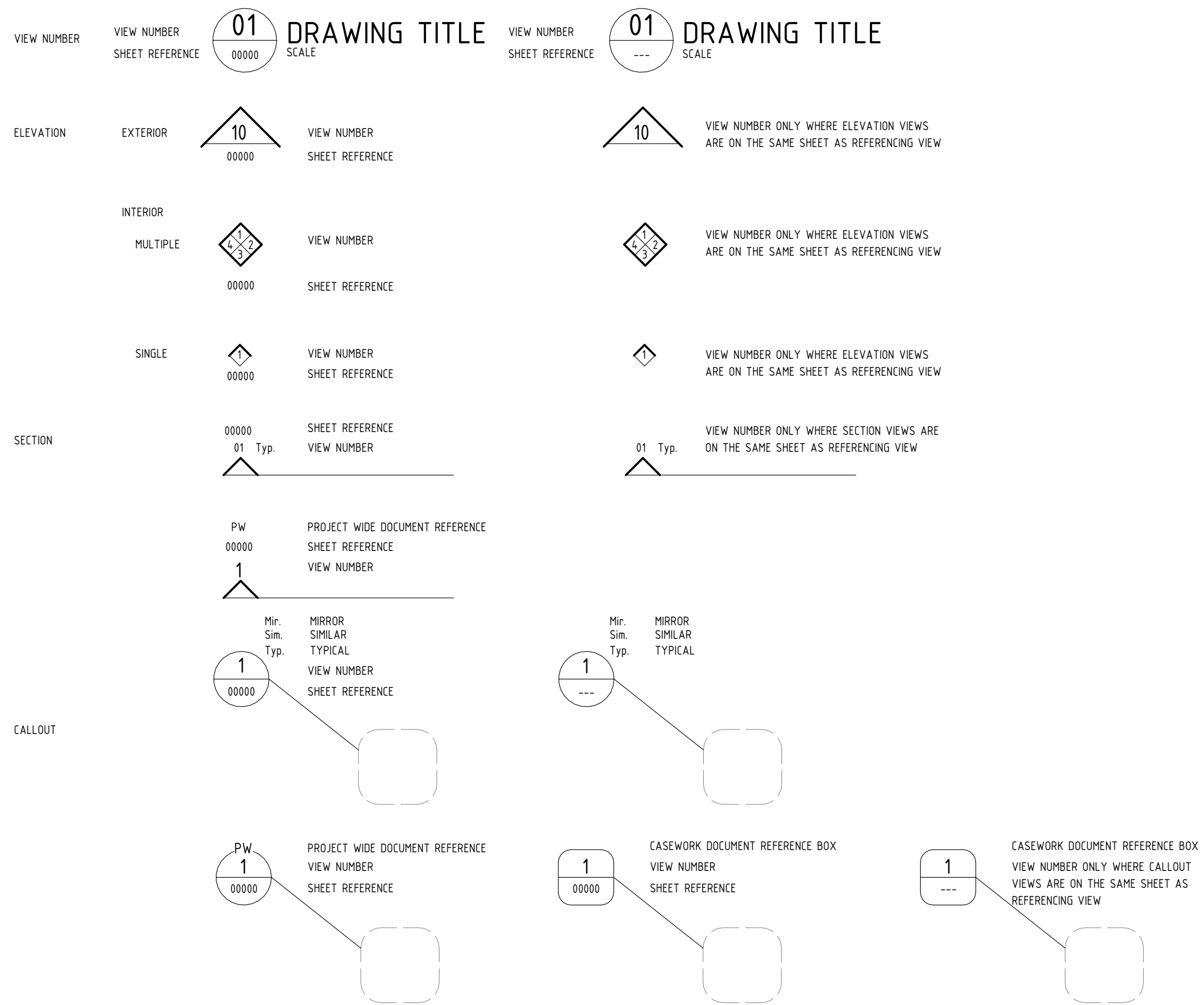
VICTORIA PARK TO CANNING  
LEVEL CROSSING REMOVAL

CARLISLE - ARCHITECTURAL  
STATION WIDE  
DRAWING LIST

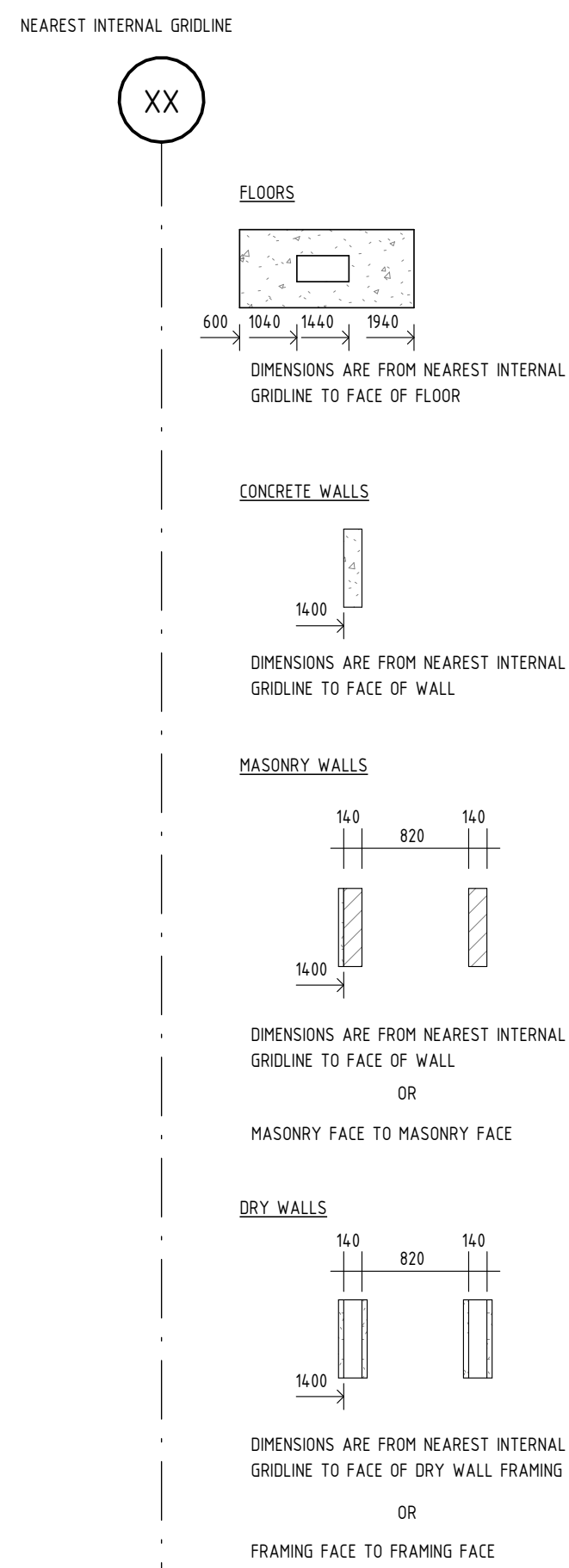
PTA Drawing No: 04-A-69-AR0006 Rev: A02

LEGENDS

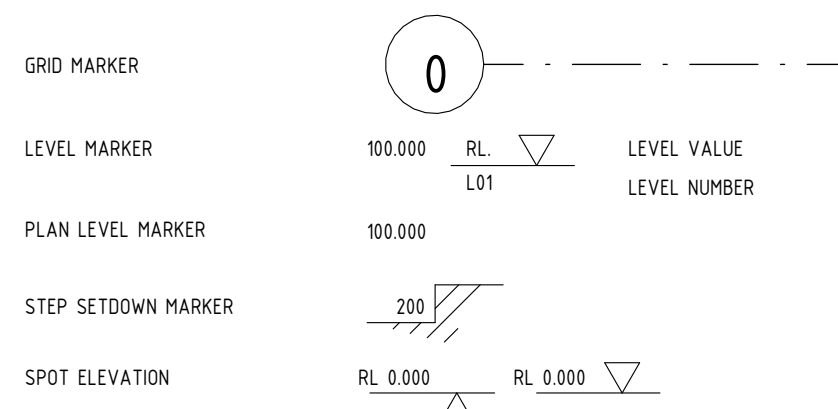
CROSS REFERENCING



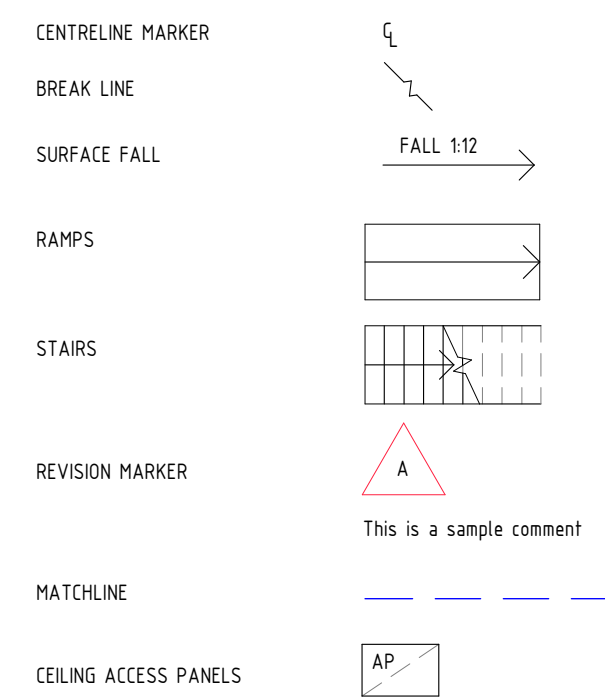
DIMENSION LEGEND



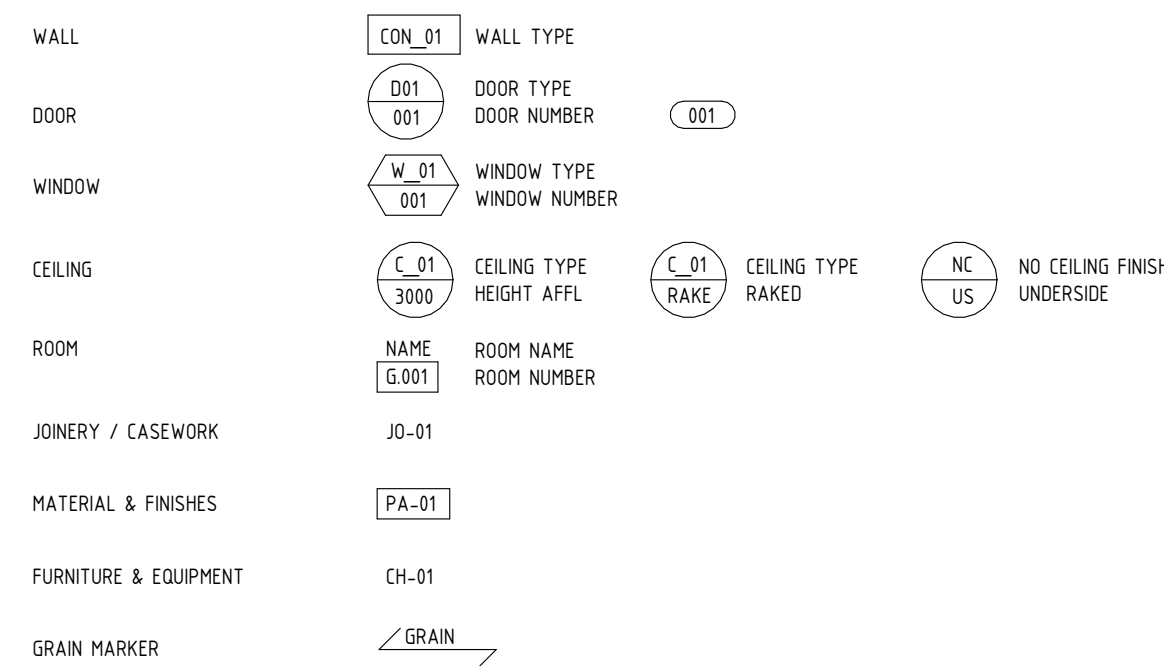
GRIDS AND LEVELS



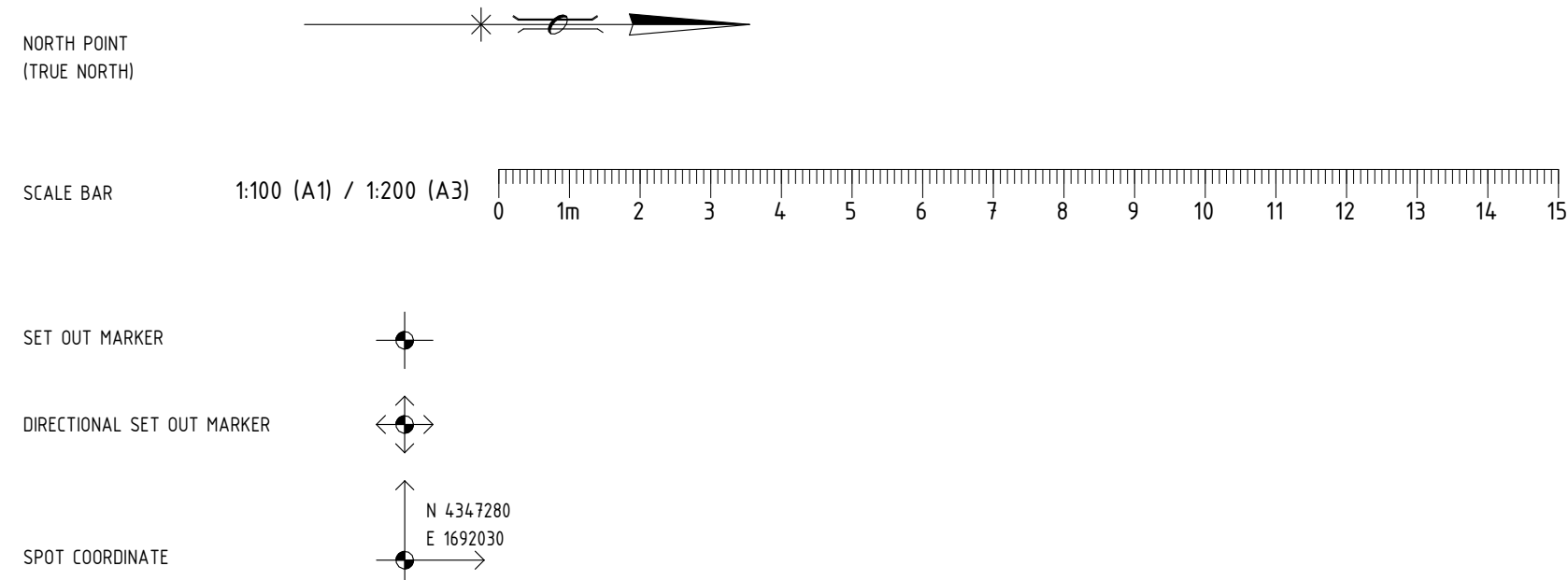
MISCELLANEOUS MARKERS



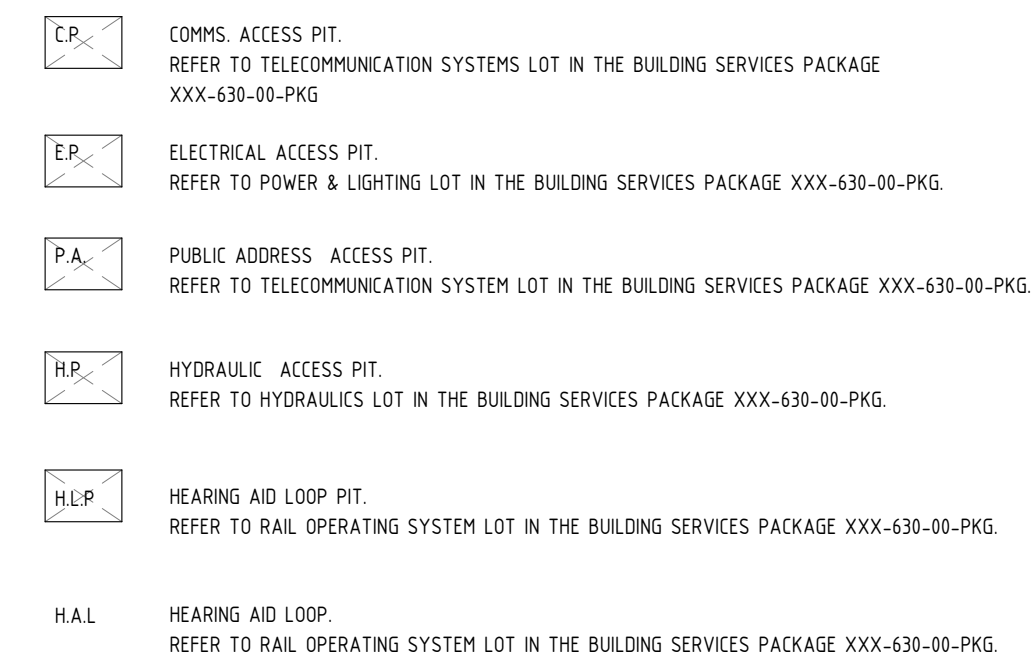
ELEMENT AND MATERIAL MARKERS



LOCATION AND SET OUT



SERVICE PITS (FLOORS)



PRINT IN COLOUR

FOR INFORMATION

REV	DATE	AMENDMENT	DSN	DRN	CHK	APP
A02	13.12.22	DEVELOPMENT APPLICATION	HAS	HAS	JPD	BH
A01	03.11.22	ISSUED FOR INTERMEDIATE DETAILED DESIGN	HAS	HAS	JPD	BH
A	04.08.22	ISSUED FOR REFERENCE DESIGN	HAS	HAS	JPD	IS
ORIG SIZE	AT ORIGINAL PLOT SIZE		This document must not be copied without PTA's written permission, and the contents thereof must not be imparted to a third party nor be used for any unauthorised purpose.			
A1	0 10 20 30 40 50 100mm		Contractor No: LXR-P1-Z1-CR-SN-AR-DWG-00003			



VALIDATION  
 SIGNATURE  
 DATE  
 DATE APPROVED

REFERENCES

SCALE  
 1 : 50  
 DATUM  
 HORIZONTAL: PCG20  
 VERTICAL: AHD71

DESIGNED HASSELL  
 DRAWN HASSELL  
 CHECKED J.P. DAVIES  
 APPROVED B. HOY  
 DATE 04.08.2022

Government of Western Australia  
 Public Transport Authority  
 VICTORIA PARK TO CANNING  
 LEVEL CROSSING REMOVAL  
 CARLISLE - ARCHITECTURAL  
 STATION WIDE  
 SYMBOLOGY  
 PTA Drawing No: 04-A-69-AR0007 Rev: A02



GENERAL ABBREVIATIONS

ACC	AIR CONDITIONING CONDENSER.
ACL	ASSISTANCE CALL LIGHT
AF	APRON FLASHING. REFER TO SCHEDULE FOR DETAILS
AFFL	ABOVE FINISHED FLOOR LEVEL
AFG	AUTOMATIC FARE GATE
A/G	ABOVE GROUND
AM	ARCHITECTURAL METALWORK. (STAIR NOSING & THRESHOLD PLATES). REFER TO SCHEDULE FOR DETAILS
AP	ACCESS PANEL
ATM	AUTOMATIC TELLER MACHINE
AVVM	ADD VALUE VENDING MACHINE
BC	BERGE CAPPING, REFER TO SCHEDULE FOR DETAILS
BCT	BEARER CHANGE TABLE
BF	BERGE FLASHING, REFER TO SCHEDULE FOR DETAILS
BG	BOX GUTTER
BH	BROOM HOLDER
BLN-XX	BUBBISH BIN, REFER TO FF&E SCHEDULE FOR TYPE DETAILS
BS-XX	BALUSTRADE SYSTEM, REFER TO ARCHITECTURAL DRAWINGS FOR DETAILS
BLK-XX	BLOCKWORK, REFER TO M&F SCHEDULE FOR FINISHES, AND ARCHITECTURAL DRAWINGS FOR DETAILS
BM	BIRD MESH, REFER TO M&F SCHEDULE FOR DETAILS
BOL-XX	BOLLARD, REFER TO FF&E SCHEDULE
BP-XX	BIRD PROOFING, REFER TO FF&E SCHEDULE
BR	BACKREST (WC)
BRK	BROOM MOP RACK
CBU	CHILLED / BOILING WATER UNIT
CCTV	CLOSED CIRCUIT TELEVISION
CER	COMMUNICATION EQUIPMENT ROOM
CFC	COMPRESSED FIBRE CEMENT SHEETING
CH	COAT HOOK
CHS	CIRCULAR HOLLOW SECTION
CMJ	CONCRETE MOVEMENT JOINT
CJ	CONSTRUCTION JOINT
CL	CENTRELING
CL-XX	CEILING / SOFFIT, REFER TO M&F SCHEDULE FOR TYPE DETAILS
CO-XX	CONCRETE FINISH, REFER TO M&F SCHEDULE FOR TYPE DETAILS
COL	COLUMN
CON-XX	CONCRETE WALL TYPE, REFER TO M&F SCHEDULE FOR TYPE DETAILS
CONC	REINFORCED CONCRETE
COS	CONFIRM ON SITE
CP	CLADDING PANEL TYPE
CPF	CAPPED CONDUIT POINT FOR FUTURE SERVICES RETICULATION
CPBD	CUPBOARD
CR	CARD READER
CS	CLEANER'S SINK
CSP	COLLECTION SUMP PIT
DXX	DOOR TYPE, REFER TO SCHEDULE FOR DOOR TYPE DETAILS DETAILS
DIAPB	DESIGNATED ACCESSIBLE PARKING BAY
DB	DISTRIBUTION BOARD
DC-XX	DRAINAGE CHANNEL, REFER TO M&F SCHEDULE FOR DETAILS
DEJ	DOWELLED EXPANSION JOINT
DF	DRINK FOUNTAIN
DJ	DOWELLED JOINT
DKP	DOOR KICKPLATE
DIA	DIAMETER
DIGR	DIGITAL RADIO
DL	DOWNLIGHT
DO	DRAINAGE OUTLET
DP-XX	DOWNPPE
DR-XX	FLOOR DRAINAGE OUTLET
DRB	DURESS BUTTON CONNECTED TO ALARM SYSTEM
DS	DIRECTIONAL SIGNAGE
EA	EQUAL ANGLE
EB-XX	EYE BOLT, PROPRIETARY ROOF SAFETY SYSTEM
EBP	EARTH BONDING PIT
EF	EXHAUST FAN
EG	EAVES GUTTER
EJ	EXPANSION JOINT
EM	EMERGENCY LIGHT
EP	ELECTRICAL PIT TYPE
EQ	EQUAL
EX	EXISTING ITEMS
FAS-XX	FASCIA, REFER M&F SCHEDULE FOR TYPE DETAILS
FBT-XX	FIXING BRACKET TYPE
FC	FIBRE CEMENT SHEETING
FB	FIELD CABINET
FCL	FINISHED CEILING LEVEL
FCU	FLUNG CABINET UNIT
FE-01	FENCE TYPE 01 - STATION PALISADE FENCE, REFER TO M&F SCHEDULE FOR TYPE DETAILS
FE-02	FENCE TYPE 02 - STATION CHAIN LINK MESH FENCE, REFER TO M&F SCHEDULE FOR TYPE DETAILS
FEX-01	FIRE EXTINGUISHER - DCP TYPE
FEX-02	FIRE EXTINGUISHER - CO2 TYPE
FFL	FINISHED FLOOR LEVEL
FGL	FINISHED GROUND LEVEL
FH	FIRE HYDRANT
FL-XX	FLOOR FINISH, REFER TO SCHEDULE FOR TYPE DETAILS
FLB	FLOOR BOX - FLUSH MOUNT
FR	FRIDGE
FW	FLOOR WASTE
G	GATE, REFER TO GATE SCHEDULE FOR TYPE DETAILS
GALV	COLD GALVANISED
GL-XX	GLASS PANEL, REFER TO FACADE ENGINEERS SCHEDULE FOR GLASS TYPE DETAILS.
GP	STORMWATER GULLY PIT
GPO	GENERAL PURPOSE POWER OUTLET
GR-XX	GRAB RAIL, REFER TO FF&E SCHEDULE FOR TYPE DETAILS
HBD-XX	HAND BASIN, REFER TO FF&E SCHEDULE FOR TYPE DETAILS
HCB	HYDRAULIC CABINET
HD-XX	HAND DRYER, REFER TO FF&E SCHEDULE FOR TYPE DETAILS
HOG	HOT DIPPED GALVANISED
HJ	HORIZONTAL JOINT
HLP	HEARING AID LOOP PIT
HAL-XX	HEARING AID LOOP
HPH	HIGH PRESSURE HOSE OUTLET
HP	HYDRAULIC PIT

HPP	HIGH PRESSURE PUMP OUTLET
HR-XX	HANDRAIL, REFER TO M&F SCHEDULE FOR TYPE DETAILS
HS	HAND SOAP DISPENSER
HSP	HYDRAULIC SERVICES PIT
HTG-XX	HEEL GUARD TRENCH GRATE, REFER TO M&F SCHEDULE FOR TYPE DETAILS
HV	HIGH VOLTAGE
IJ	ISOLATION JOINT
INS-XX	INSULATION TYPE, REFER TO M&F SCHEDULE FOR TYPE DETAILS.
IDS	INSPECTION OPENING SITE
KJ	KEY JOINT
KR	KERB RAIL
KS	SECURITY KEY SWITCH
LB	LIFTING BEAM
LAB-XX	LADDER BRACKET, REFER TO M&F SCHEDULE FOR TYPE DETAILS
LEB	LIFT CALL BOLLARD
LCC	LIFT CONTROL CABINET
LF-XX	LIGHT FITTING, REFER TO ELECTRICAL ENGINEERS SCHEDULES FOR TYPE DETAILS
LFU-XX	LANDSCAPE FURNITURE/FITTING, REFER TO LANDSCAPE FF&E SCHEDULE
LF/R	LIGHT FITTING - RECESSED, REFER TO ELECTRICAL ENGINEERS SCHEDULES FOR TYPE DETAILS
LG	LEAF/HAIL GUARD, REFER TO M&F SCHEDULE FOR TYPES DETAILS.
LO-XX	LOCKER, REFER TO FF&E SCHEDULE FOR DETAILS
LP-XX	LIGHT POLE, REFER TO ELECTRICAL ENGINEERS SCHEDULES FOR TYPE DETAILS
LPP	LIFT SHAFT PUMP OUT POINT
LPE-XX	LIGHT POLE DOUBLE, REFER TO ELECTRICAL ENGINEERS SCHEDULES FOR TYPE DETAILS
LV	LOW VOLTAGE
LV-XX	LOUVRE, REFER TO M&F SCHEDULE FOR TYPE DETAILS
MCB	MECHANICAL CABINET / BOARD
MDB	MAIN DISTRIBUTION BOARD
MFG	MANUAL FARE GATE
MH	MANHOLE
MIR-XX	MIRROR, REFER TO M&F SCHEDULE FOR TYPE DETAILS
MM	MIMIC FIRE PANEL
MJ	MOVEMENT JOINT
MS	MOTION SENSOR
MW	MATWELL
NOM	NOMINAL
NTS	NOT TO SCALE
O/A	OVERALL
OF-XX	OVERFLOW / SPITTER
OHLE	OVERHEAD LINE EQUIPMENT
OHV	OVERHEAD WIRES
PTL	PUBLIC TELEPHONE
PA	PUBLIC ANNOUNCEMENT (PA) SERVICES PIT
PB	PINBOARD
PC	PRECAST CONCRETE, REFER TO M&F SCHEDULE FOR TYPE DETAILS
PFC	PARALLEL FLANGE CHANNEL
PID	PASSENGER INFORMATION DISPLAY UNIT
PIM	PASSENGER INFORMATION MODULE
PIR	PASSIVE INFRARED
PMJ	PAVING MOVEMENT JOINTS. TO BE INSTALLED AT MAX. 5m CENTRES, MAXIMUM AREA 16m2 THROUGHOUT PLATFORM PAVING IN ACCORDANCE WITH ARCHITECTURAL SPECIFICATION
PPR	PUBLIC PLACE RECYCLING BINS, REFER TO FF&E SCHEDULE FOR TYPE DETAILS
PPT	PHONE POINTS (TERMINATION)
PR	PRINTER (BY OTHERS)
PS	PRIORITY SEAT
PSP	PASSENGER SERVICES PANEL SUITE
PSHP	PRINCIPAL SHARED PATH
PT-XX	PAINT FINISH TYPE, REFER TO M&F SCHEDULE FOR TYPE DETAILS
PTD	PAPER TOWEL DISPENSER
P/T	PHONE, TAXI
RB	ROLLER BLIND
RC	RIDGE CAPPING, REFER TO M&F SCHEDULE FOR TYPE DETAILS
RD	ROLLER DOOR
RS-XX	ROOF FINISH, REFER M&F SCHEDULE FOR TYPE DETAILS.
RH	RAINWATER HEAD, REFER M&F SCHEDULE FOR TYPE DETAILS.
RHS	RECTANGULAR HOLLOW SECTION
RL	RELATIVE LEVEL (TO AUSTRALIAN HEIGHT DATUM SURVEY POINT - AHD)
SAFE	SAFE
SB	VEHICULAR SPEED BUMP
SC-XX	SCREENING, REFER TO M&F SCHEDULE FOR TYPE DETAILS
SCP	SMART CARD PROCESSOR
SD	STORMWATER DRAIN
SDC	SHARPS DISPOSAL CONTAINER
SDJ	SAWN DOWELLED JOINT
SOU	SANITARY DISPOSAL UNIT
SE	SEALANT
SEA-XX	PASSENGER SEAT TYPE
SER	SIGNALLING EQUIPMENT ROOM
SF	SOAKER FLASHING
SH	SHelf
SHS	SQUARE HOLLOW SECTION
SJ	SLAB JOINT
SM-3	3 CAR TRAIN STOPPING MARK. REFER TO SCHEDULE FOR DETAILS
SM-6	6 CAR TRAIN STOPPING MARK. REFER TO SCHEDULE FOR DETAILS
SMSB	SITE MAIN SWITCHBOARD
SN-XX	STAIR NOSING, REFER TO M&F SCHEDULE FOR DETAILS
SNK	SINK STAINLESS STEEL
SP	SIGNALS PIT
SPC	SUMP PIT CHAMBER
SPS	STORMWATER PUMP STATION CONTROL PANEL
SPV	SUMP PIT VALVE BOX
SS	STAINLESS STEEL 316 GRADE UNO
SSL	STRUCTURAL SLAB LEVEL
SU	SUMP
SW	STORMWATER
SWG	STORMWATER GULLY
SWGp	STORMWATER GULLY PIT AND TRENCH GRATE
SWP	STORMWATER PIT
T	HOSE TAP
TBC	TO BE CONFIRMED
TG	TREE GRATE

TGS-XX	TACTILE GROUND SURFACE INDICATORS TILE, REFER TO M&F SCHEDULE FOR TYPE DETAILS
TOC	TOP OF CONCRETE
TOW	TOP OF WALL
TPL-XX	THRESHOLD PLATE, REFER TO M&F SCHEDULE FOR TYPE DETAILS
TRH-XX	TOILET ROLL HOLDER, REFER TO FF&E SCHEDULE FOR TYPE DETAILS
TYP	TYPICAL
UG	UNDER GROUND
UA	UNEQUAL ANGLE
UB	UNIVERSAL BEAM
UF	UNDER FLASHING
UNO	UNLESS NOTED OTHERWISE
VJ	VERTICAL JOINT
VM	VENDING MACHINE
WB	WHITEBOARD
WC-XX	WC PAN, REFER TO FF&E SCHEDULE FOR TYPE DETAILS
WCWS	WHEELCHAIR WAITING SPACE
WN-XX	WINDOWS, REFER TO WINDOW SCHEDULE FOR TYPE DETAILS
WL-XX	WALL LINING/CLADDING, REFER TO M&F SCHEDULE FOR TYPE DETAILS
WM	WATER MAINS MANHOLE
WMP	WATER MAINS PIT
WP	WATER PIT
WPM	WATERPROOF MEMBRANE, REFER TO M&F SCHEDULE FOR TYPE DETAILS
WS	WHEEL STOP
WT-XX	WALL TYPE, REFER TO WALL TYPE DRAWING DETAILS
XX	WHERE CODES NOTE "- XX" IN LIEU OF SPECIFIC NUMBER, THIS INDICATES MORE THAN ONE

PRINT IN COLOUR

FOR INFORMATION

A02	13.12.22	DEVELOPMENT APPLICATION	HAS	HAS	JPD	BH	
A01	03.11.22	ISSUED FOR INTERMEDIATE DETAILED DESIGN	HAS	HAS	JPD	BH	
A	04.08.22	ISSUED FOR REFERENCE DESIGN	HAS	HAS	JPD	IS	
REV	DATE	AMENDMENT	DSN	DRN	CHK	APP	
ORIG SIZE	0 10 20 30 40 50 100mm		This document must not be copied without PTA's written permission, and the contents thereof must not be imparted to a third party nor be used for any unauthorised purpose.				
A1	AT ORIGINAL PLOT SIZE		Contractor No: LXR-P1-Z1-CR-SN-AR-DWG-00004				

ARMADALE LINE UPGRADE ALLIANCE  
Innovation to Reality

VALIDATION
SIGNATURE
DATE
DATE APPROVED

REFERENCES
SCALE
1 : 50
DATUM
HORIZONTAL: PCG20
VERTICAL: AHD71

DESIGNED	HASSELL
DRAWN	HASSELL
CHECKED	J.P. DAVIES
APPROVED	B. HOY
DATE	04.08.2022

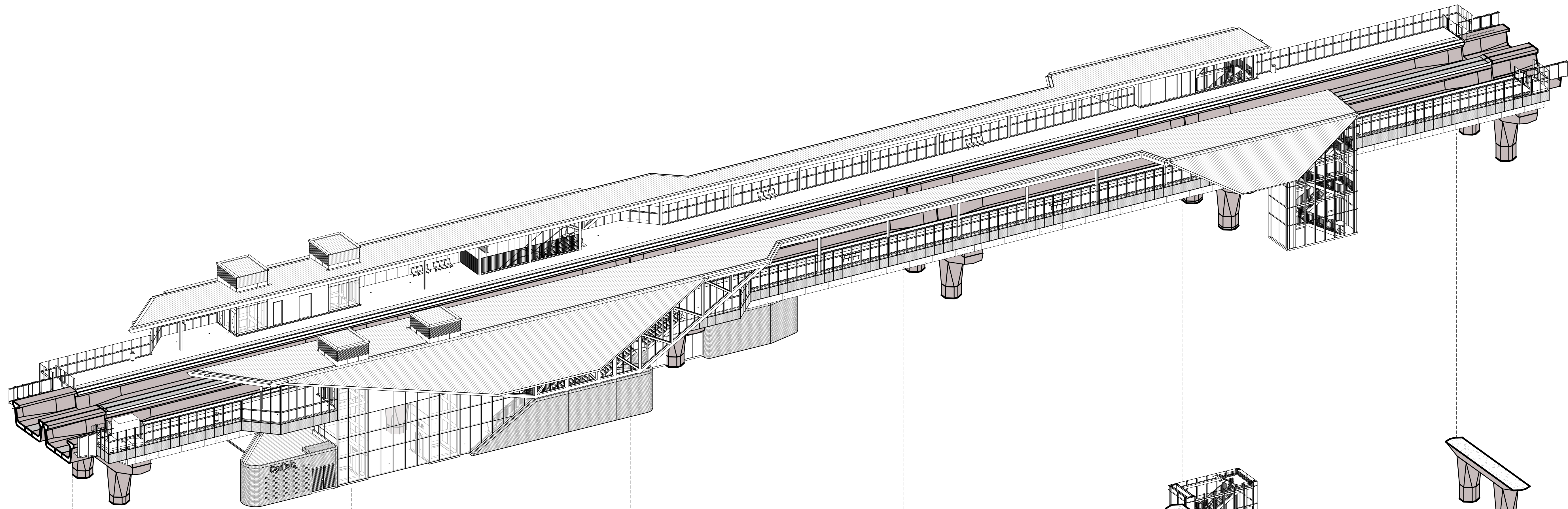
VICTORIA PARK TO CANNING  
LEVEL CROSSING REMOVAL

Government of Western Australia  
Public Transport Authority

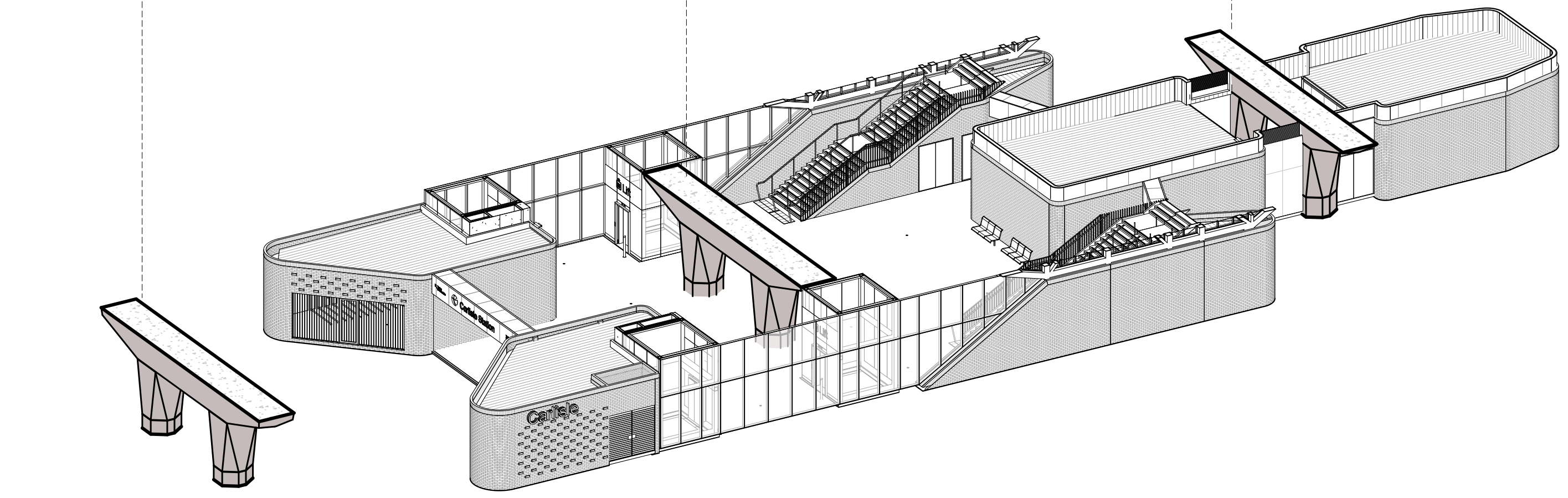
CARLISLE - ARCHITECTURAL  
STATION WIDE  
ABBREVIATIONS

PTA Drawing No: 04-A-69-AR0008 Rev: A02

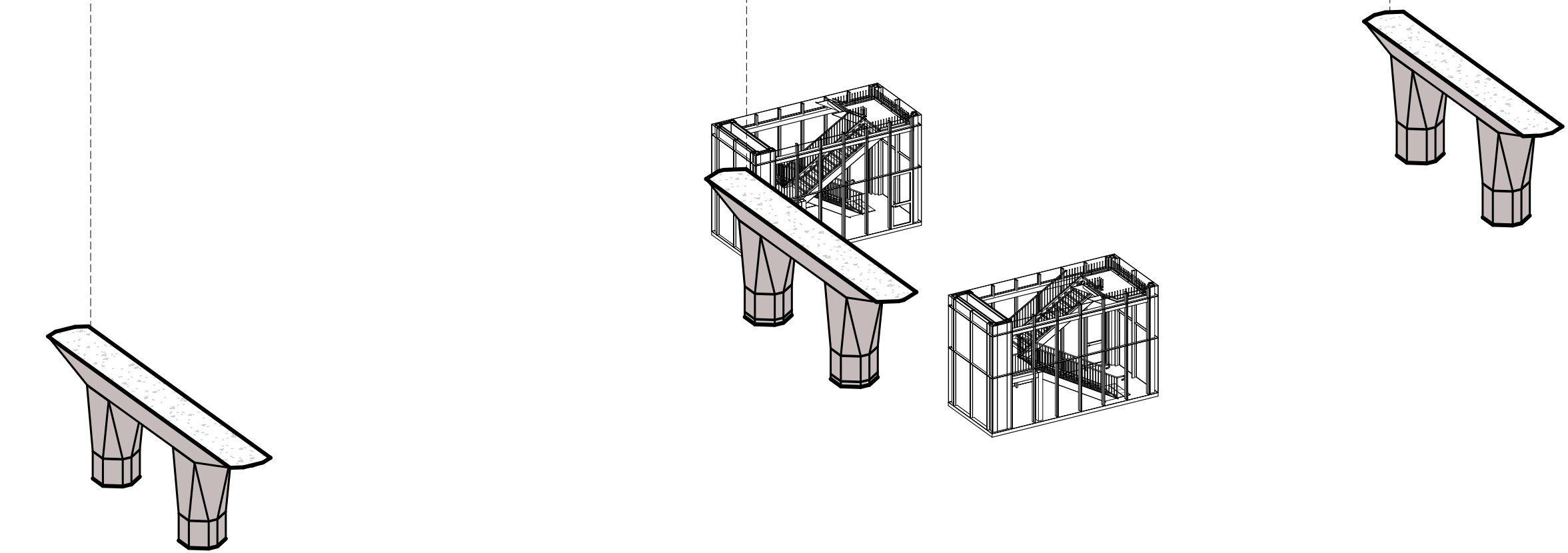




1 STATION AXONOMETRIC



2 STATION AXONOMETRIC CONCOURSE



1:100 (A1) / 1:200 (A3) 0 1m 2 3 4 5 6 7 8 9 10 11 12 13 14 15

PRINT IN COLOUR

**FOR INFORMATION**

REV	DATE	AMENDMENT	DSN	DRN	CHK	APP
A02	13.12.22	DEVELOPMENT APPLICATION	HAS	HAS	JPD	BH
A01	03.11.22	ISSUED FOR INTERMEDIATE DETAILED DESIGN	HAS	HAS	JPD	BH
A	04.08.22	ISSUED FOR REFERENCE DESIGN	HAS	HAS	JPD	IS

ORIG SIZE A1

0 10 20 30 40 50 100mm

AT ORIGINAL PLOT SIZE

This document must not be copied without PTA's written permission, and the contents thereof must not be imparted to a third party nor be used for any unauthorised purpose.

ARMADALE LINE UPGRADE ALLIANCE  
Innovation to Reality

Contractor No: LXR-P1-Z1-CR-SN-AR-DWG-00006

VALIDATION

SIGNATURE

DATE

DATE APPROVED

REFERENCES

SCALE

DATUM

HORIZONTAL: PCG20

VERTICAL: AHD71

DESIGNED HASSELL

DRAWN HASSELL

CHECKED J.P. DAVIES

APPROVED B. HOY

DATE 04.08.2022

VICTORIA PARK TO CANNING  
LEVEL CROSSING REMOVAL

CARLISLE - ARCHITECTURAL  
STATION WIDE  
AXONOMETRIC

PTA Drawing No: 04-A-69-AR0010 Rev: A02





1:100 (A1) / 1:200 (A3) 0 1m 2 3 4 5 6 7 8 9 10 11 12 13 14 15

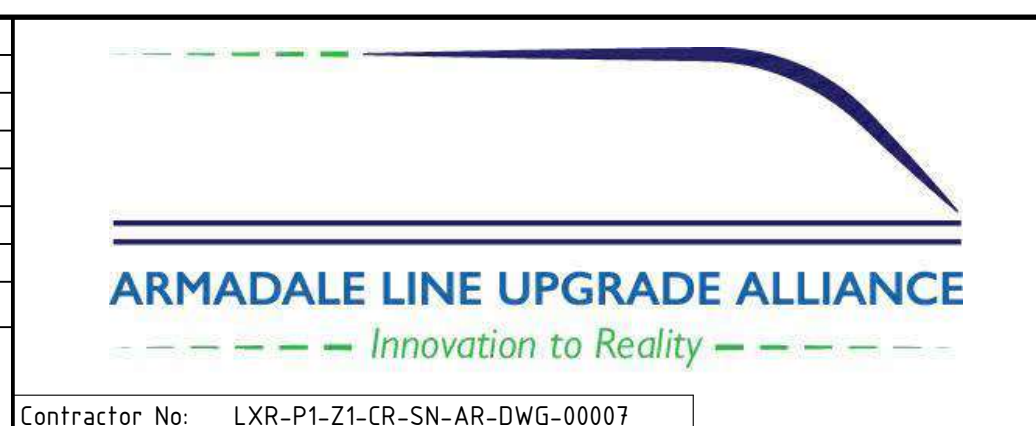
PRINT IN COLOUR

**FOR INFORMATION**

REV	DATE	AMENDMENT	DSN	DRN	CHK	APP
A02	13.12.22	DEVELOPMENT APPLICATION	HAS	HAS	JPD	BH
A01	03.11.22	ISSUED FOR INTERMEDIATE DETAILED DESIGN	HAS	HAS	JPD	BH
A	04.08.22	ISSUED FOR REFERENCE DESIGN	HAS	HAS	JPD	IS

ORIG SIZE	0 10 20 30 40 50 100mm	This document must not be copied without PTA's written permission, and the contents thereof must not be imparted to a third party nor be used for any unauthorised purpose.
A1	AT ORIGINAL PLOT SIZE	



VALIDATION

SIGNATURE

DATE

DATE APPROVED

REFERENCES

SCALE

DATUM

HORIZONTAL: PCG20

VERTICAL: AHD71

DESIGNED HASSELL

DRAWN HASSELL

CHECKED J.P. DAVIES

APPROVED B. HOY

DATE 04.08.2022

Government of Western Australia  
Public Transport Authority

VICTORIA PARK TO CANNING  
LEVEL CROSSING REMOVAL

**CARLISLE - ARCHITECTURAL**  
**STATION WIDE**  
**ARCHITECTURAL VISUALISATION - EXTERNAL VIEW**  
PTA Drawing No: **04-A-69-AR0011** | Rev: **A02**





1:100 (A1) / 1:200 (A3) 0 1m 2 3 4 5 6 7 8 9 10 11 12 13 14 15

PRINT IN COLOUR

**FOR INFORMATION**

REV	DATE	AMENDMENT	DSN	DRN	CHK	APP
A02	13.12.22	DEVELOPMENT APPLICATION	HAS	HAS	JPD	BH
A01	03.11.22	ISSUED FOR INTERMEDIATE DETAILED DESIGN	HAS	HAS	JPD	BH
A	04.08.22	ISSUED FOR REFERENCE DESIGN	HAS	HAS	JPD	IS

ORIG SIZE	0 10 20 30 40 50 100mm	This document must not be copied without PTA's written permission, and the contents thereof must not be imparted to a third party nor be used for any unauthorised purpose.
A1	AT ORIGINAL PLOT SIZE	

**ARMADALE LINE UPGRADE ALLIANCE**  
Innovation to Reality

Contractor No: LXR-P1-Z1-CR-SN-AR-DWG-00008

VALIDATION

SIGNATURE

DATE

DATE APPROVED

REFERENCES

SCALE

DATUM

HORIZONTAL: PCG20

VERTICAL: AHD71

DESIGNED HASSELL

DRAWN HASSELL

CHECKED J.P. DAVIES

APPROVED B. HOY

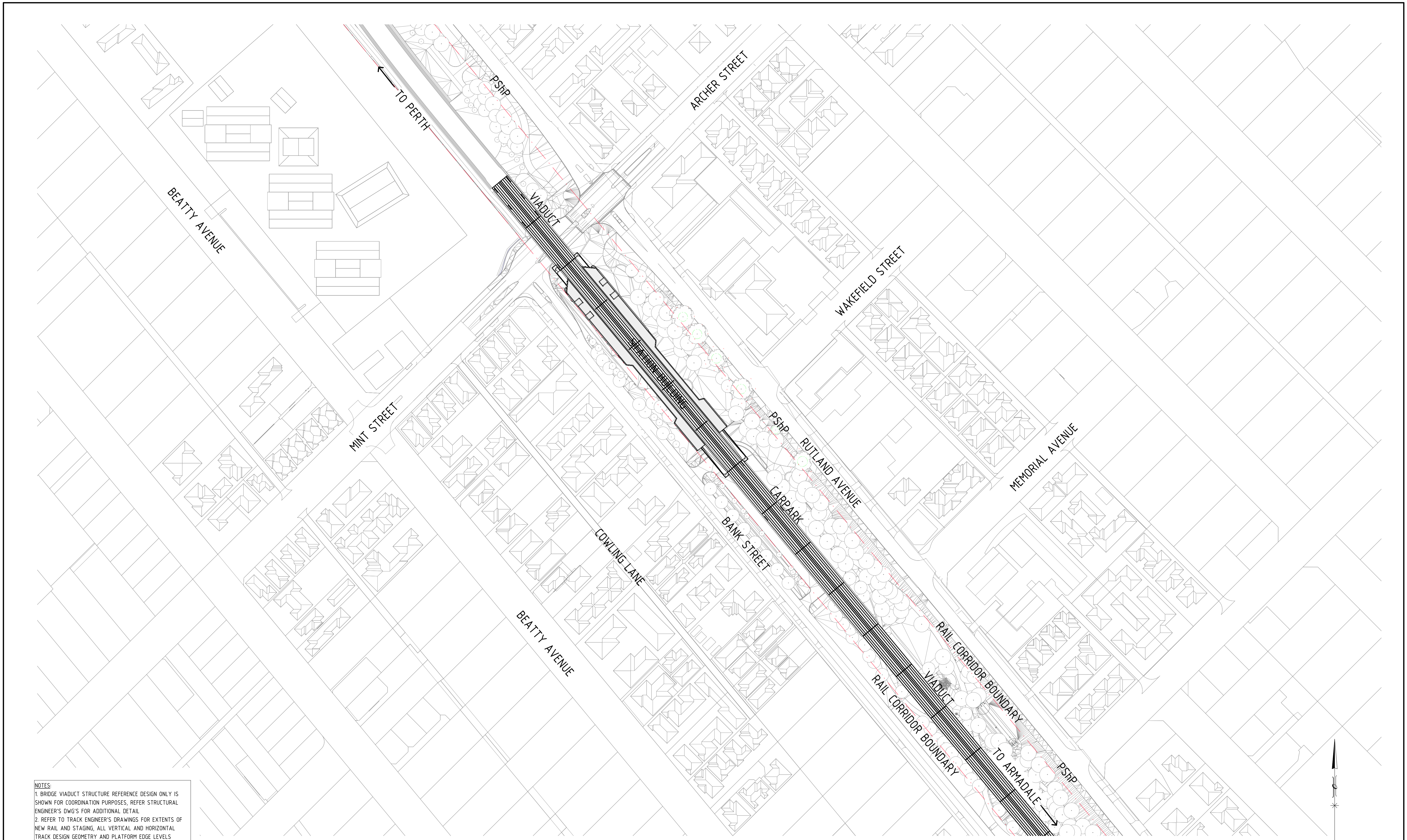
DATE 04.08.2022

VICTORIA PARK TO CANNING  
LEVEL CROSSING REMOVAL

CARLISLE - ARCHITECTURAL  
STATION WIDE  
ARCHITECTURAL VISUALISATION - INTERNAL VIEW

PTA Drawing No: 04-A-69-AR0012 Rev: A02





NOTES:  
 1. BRIDGE VIADUCT STRUCTURE REFERENCE DESIGN ONLY IS SHOWN FOR COORDINATION PURPOSES, REFER STRUCTURAL ENGINEER'S DWG'S FOR ADDITIONAL DETAIL  
 2. REFER TO TRACK ENGINEER'S DRAWINGS FOR EXTENTS OF NEW RAIL AND STAGING, ALL VERTICAL AND HORIZONTAL TRACK DESIGN GEOMETRY AND PLATFORM EDGE LEVELS

**1 LOCALITY PLAN**  
 0020 1 : 1000

1:1000 (A1) / 1:2000 (A3) 0 10m 20 30 40 50 60 70 80 90 100 110 120 130 140 150

PRINT IN COLOUR

**FOR INFORMATION**

REV	DATE	AMENDMENT	DSN	DRN	CHK	APP
A02	13.12.22	DEVELOPMENT APPLICATION	HAS	HAS	JPD	BH
A01	03.11.22	ISSUED FOR INTERMEDIATE DETAILED DESIGN	HAS	HAS	JPD	BH
A	04.08.22	ISSUED FOR REFERENCE DESIGN	HAS	HAS	JPD	IS

ORIG SIZE	AT ORIGINAL PLOT SIZE
A1	

This document must not be copied without PTA's written permission, and the contents thereof must not be imparted to a third party nor be used for any unauthorised purpose.

**ARMADALE LINE UPGRADE ALLIANCE**  
*Innovation to Reality*

Contractor No: LXR-P1-Z1-CR-SN-AR-DWG-00010

VALIDATION  
 SIGNATURE  
 DATE  
 DATE APPROVED

REFERENCES

SCALE  
 1 : 1000  
 DATUM  
 HORIZONTAL: PCG20  
 VERTICAL: AHD71

DESIGNED HASSELL  
 DRAWN HASSELL  
 CHECKED J.P. DAVIES  
 APPROVED B. HOY  
 DATE 04.08.2022

Government of Western Australia  
 Public Transport Authority

VICTORIA PARK TO CANNING  
 LEVEL CROSSING REMOVAL

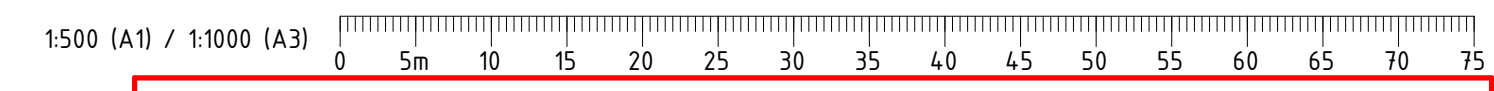
**CARLISLE - ARCHITECTURAL**  
 STATION WIDE  
 LOCALITY PLAN  
 PTA Drawing No: 04-A-69-AR0015 Rev: A02





**NOTES:**  
 1. BRIDGE VIADUCT STRUCTURE REFERENCE DESIGN ONLY IS SHOWN FOR COORDINATION PURPOSES, REFER STRUCTURAL ENGINEER'S DWG'S FOR ADDITIONAL DETAIL  
 2. REFER TO TRACK ENGINEER'S DRAWINGS FOR EXTENTS OF NEW RAIL AND STAGING, ALL VERTICAL AND HORIZONTAL TRACK DESIGN GEOMETRY AND PLATFORM EDGE LEVELS

**1 SITE PLAN**  
 0020 1 : 500



PRINT IN COLOUR

**FOR INFORMATION**

REV	DATE	AMENDMENT	DSN	DRN	CHK	APP
A02	13.12.22	DEVELOPMENT APPLICATION	HAS	HAS	JPD	BH
A01	03.11.22	ISSUED FOR INTERMEDIATE DETAILED DESIGN	HAS	HAS	JPD	BH
A	04.08.22	ISSUED FOR REFERENCE DESIGN	HAS	HAS	JPD	IS

ORIG SIZE	AT ORIGINAL PLOT SIZE
A1	



VALIDATION  
 SIGNATURE  
 DATE  
 DATE APPROVED

REFERENCES

SCALE  
 1 : 500  
 DATUM  
 HORIZONTAL: PCG20  
 VERTICAL: AHD71

DESIGNED HASSELL  
 DRAWN HASSELL  
 CHECKED J.P. DAVIES  
 APPROVED B. HOY  
 DATE 04.08.2022

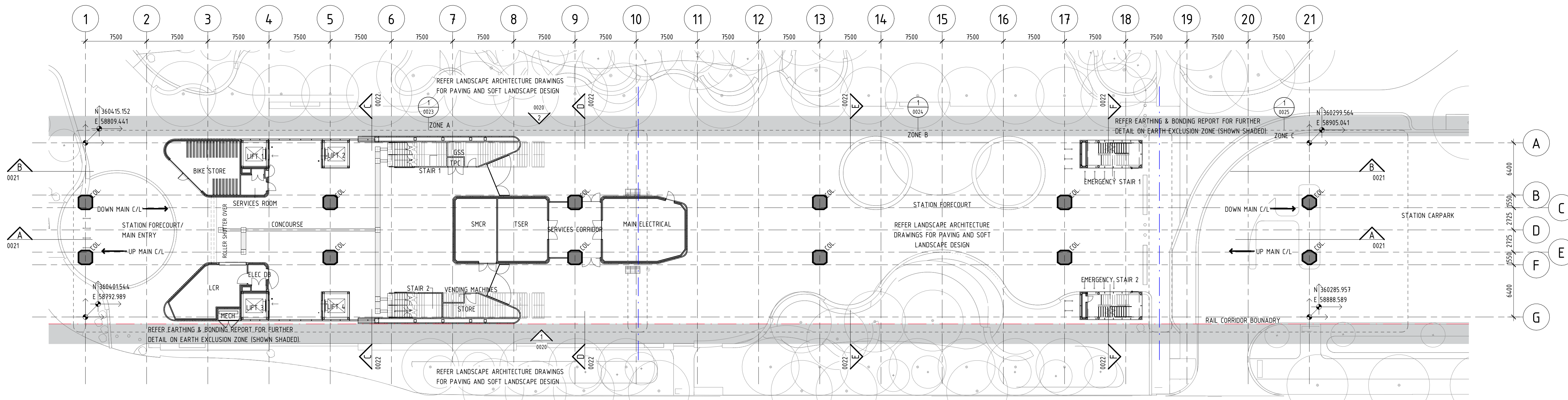
Government of Western Australia  
 Public Transport Authority

VICTORIA PARK TO CANNING  
 LEVEL CROSSING REMOVAL

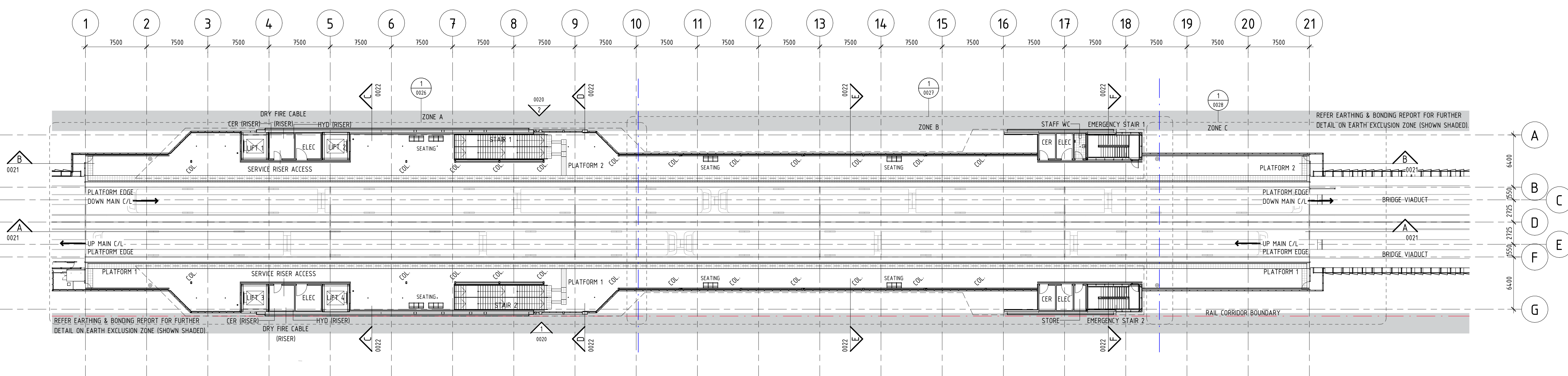
**CARLISLE - ARCHITECTURAL  
 STATION WIDE  
 SITE PLAN**

PTA Drawing No: **04-A-69-AR0016** Rev: **A02**





1 GA PLAN - CONCOURSE  
0020 1:250



2 GA PLAN - PLATFORM  
0020 1:250

LEGEND:  
--- INDICATES RAIL CORRIDOR BOUNDARY

1:250 (A1) / 1:500 (A3) 0 2.5m 5 7.5 10 12.5 15 17.5 20 22.5 25 27.5 30 32.5 35 37.5

PRINT IN COLOUR

**FOR INFORMATION**

Government of Western Australia  
Public Transport Authority

VICTORIA PARK TO CANNING  
LEVEL CROSSING REMOVAL

CARLISLE - ARCHITECTURAL  
GENERAL ARRANGEMENT  
GA PLANS  
PTA Drawing No: 04-A-69-AR0017 Rev: A02

REV	DATE	AMENDMENT	DSN	DRN	CHK	APP
A02	13.12.22	DEVELOPMENT APPLICATION	HAS	HAS	JPD	BH
A01	03.11.22	ISSUED FOR INTERMEDIATE DETAILED DESIGN	HAS	HAS	JPD	BH
A	04.08.22	ISSUED FOR REFERENCE DESIGN	HAS	HAS	JPD	IS

ORIG SIZE A1  
AT ORIGINAL PLOT SIZE

This document must not be copied without PTA's written permission, and the contents thereof must not be imparted to a third party nor be used for any unauthorised purpose.

**ARMADALE LINE UPGRADE ALLIANCE**  
Innovation to Reality

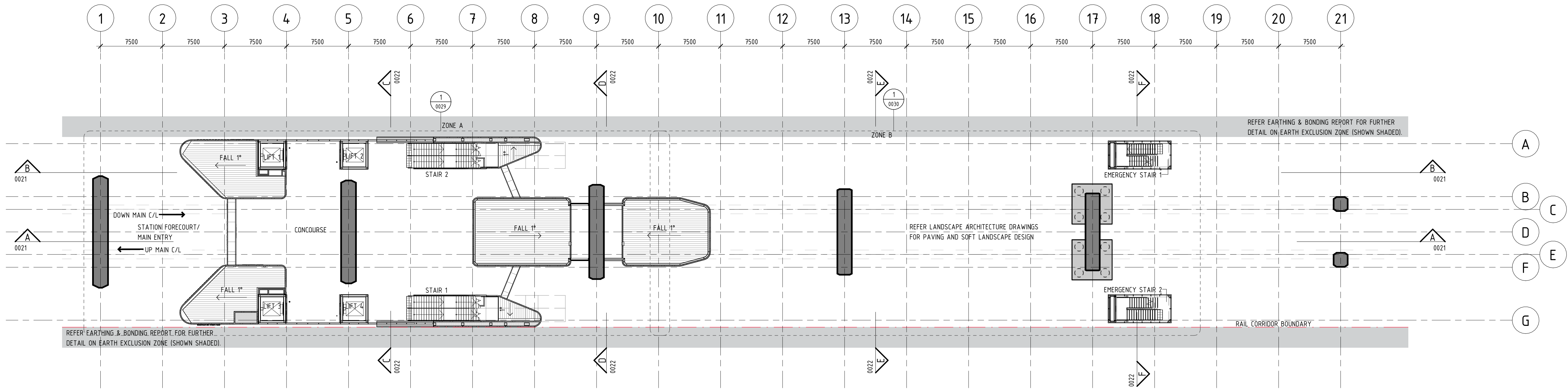
Contractor No: LXR-P1-Z1-CR-SN-AR-DWG-00100

VALIDATION  
SIGNATURE  
DATE  
DATE APPROVED

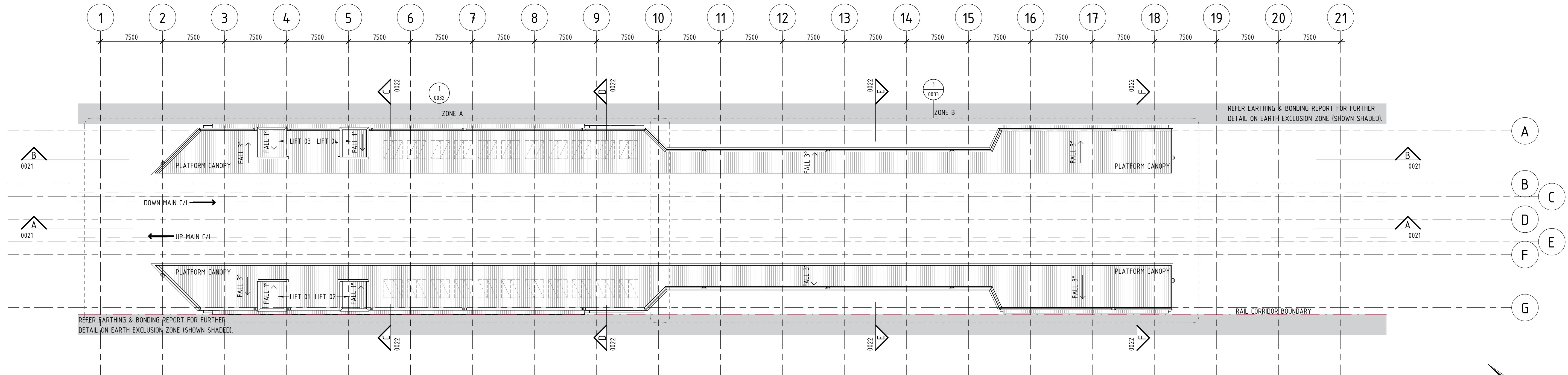
REFERENCES  
SCALE  
1:250  
DATUM  
HORIZONTAL: PCG20  
VERTICAL: AHD71

DESIGNED HASSELL  
DRAWN HASSELL  
CHECKED J.P. DAVIES  
APPROVED B. HOY  
DATE 04.08.2022



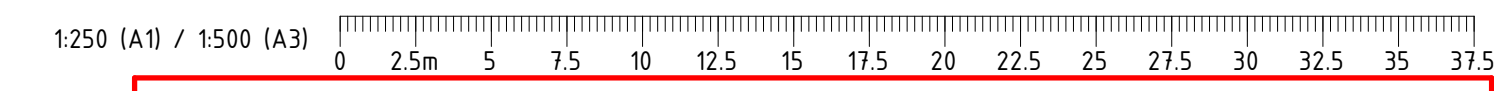


1 GA PLAN - CONCOURSE ROOF  
0020 1 : 250



2 GA PLAN - PLATFORM ROOF  
0020 1 : 250

LEGEND:  
--- INDICATES RAIL CORRIDOR BOUNDARY



PRINT IN COLOUR

**FOR INFORMATION**

Government of Western Australia  
Public Transport Authority

VICTORIA PARK TO CANNING  
LEVEL CROSSING REMOVAL

CARLISLE - ARCHITECTURAL  
GENERAL ARRANGEMENT  
GA ROOF PLANS  
PTA Drawing No: 04-A-69-AR0018 Rev: A02

REV	DATE	AMENDMENT	DSN	DRN	CHK	APP
A02	13.12.22	DEVELOPMENT APPLICATION	HAS	HAS	JPD	BH
A01	03.11.22	ISSUED FOR INTERMEDIATE DETAILED DESIGN	HAS	HAS	JPD	BH
A	04.08.22	ISSUED FOR REFERENCE DESIGN	HAS	HAS	JPD	IS

ORIG SIZE A1  
AT ORIGINAL PLOT SIZE

This document must not be copied without PTA's written permission, and the contents thereof must not be imparted to a third party nor be used for any unauthorised purpose.

ARMADALE LINE UPGRADE ALLIANCE  
Innovation to Reality

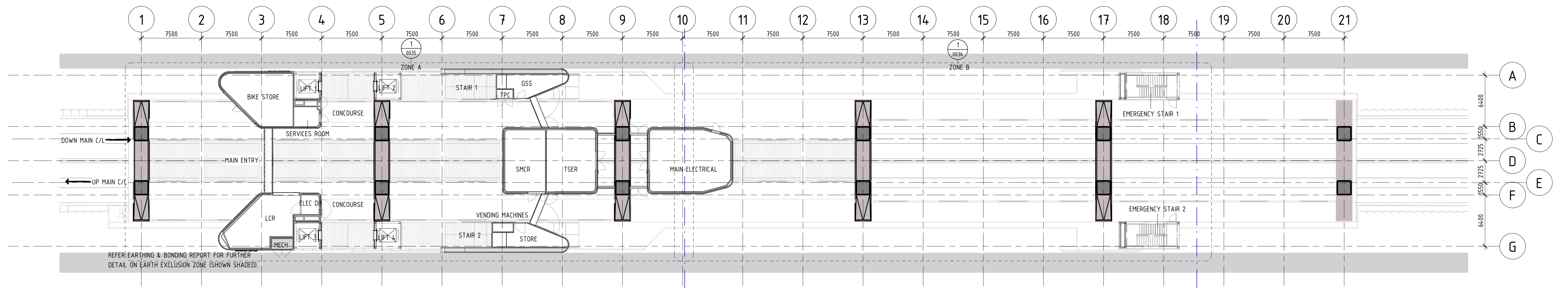
VALIDATION  
SIGNATURE  
DATE  
DATE APPROVED

REFERENCES

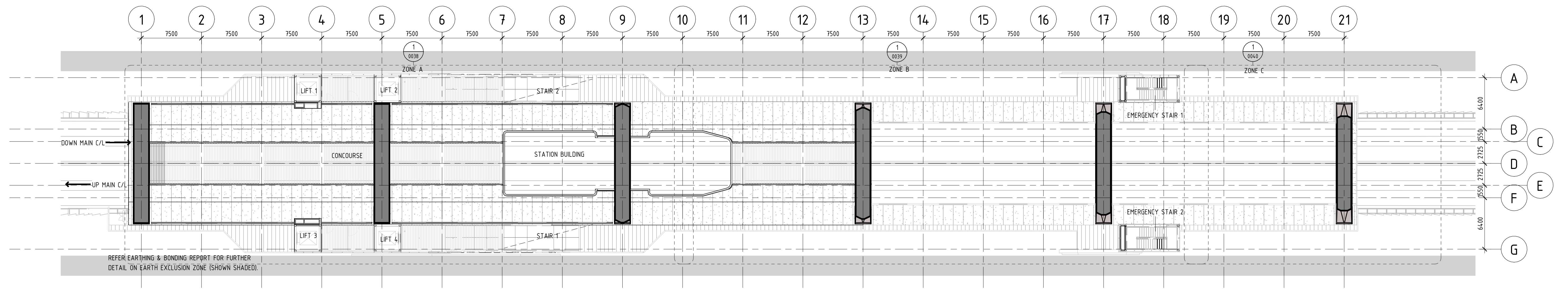
SCALE  
1 : 250  
DATUM  
HORIZONTAL: PCG20  
VERTICAL: AHD71

DESIGNED HASSELL  
DRAWN HASSELL  
CHECKED J.P. DAVIES  
APPROVED B. HOY  
DATE 04.08.2022

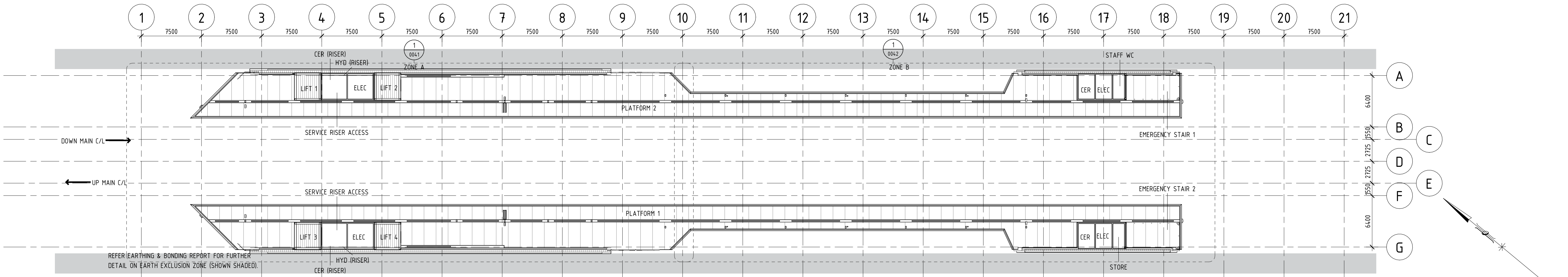




1 RCP - GA - CONCOURSE  
1: 250



2 RCP - GA - VIADUCT SOFFIT  
1: 250



3 RCP - GA - PLATFORM  
1: 250

LEGEND:  
--- INDICATES RAIL CORRIDOR BOUNDARY

1:250 (A1) / 1:500 (A3) 0 2.5m 5 7.5 10 12.5 15 17.5 20 22.5 25 27.5 30 32.5 35 37.5

PRINT IN COLOUR

**FOR INFORMATION**

Government of Western Australia  
Public Transport Authority

VICTORIA PARK TO CANNING  
LEVEL CROSSING REMOVAL

CARLISLE - ARCHITECTURAL  
GENERAL ARRANGEMENT  
GA REFLECTED CEILING PLANS  
PTA Drawing No: 04-A-69-AR0019 Rev: A02

REV	DATE	AMENDMENT	DSN	DRN	CHK	APP
A02	13.12.22	DEVELOPMENT APPLICATION	HAS	HAS	JPD	BH
A01	03.11.22	ISSUED FOR INTERMEDIATE DETAILED DESIGN	HAS	HAS	JPD	BH
A	04.08.22	ISSUED FOR REFERENCE DESIGN	HAS	HAS	JPD	IS

ORIG SIZE A1  
AT ORIGINAL PLOT SIZE

This document must not be copied without PTA's written permission, and the contents thereof must not be imparted to a third party nor be used for any unauthorised purpose.

**ARMADALE LINE UPGRADE ALLIANCE**  
Innovation to Reality

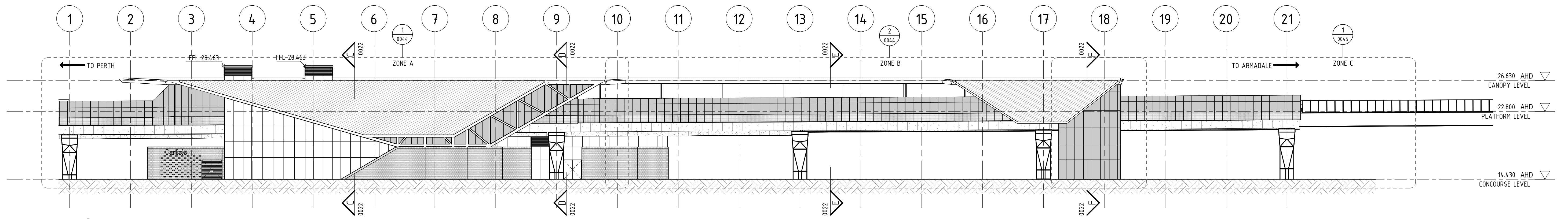
VALIDATION  
SIGNATURE  
DATE  
DATE APPROVED

REFERENCES

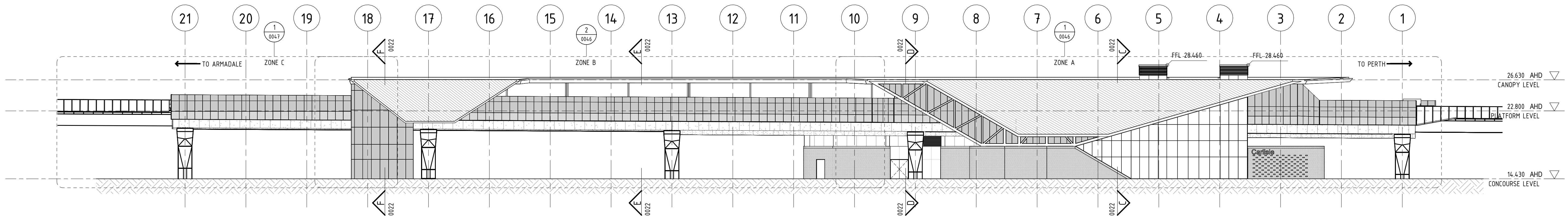
SCALE  
1: 250  
DATUM  
HORIZONTAL: PCG20  
VERTICAL: AHD71

DESIGNED HASSELL  
DRAWN HASSELL  
CHECKED J.P. DAVIES  
APPROVED B. HOY  
DATE 04.08.2022

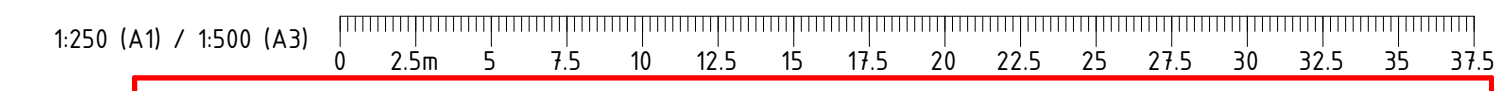




1 GA ELEVATION - WEST  
0017 1 : 250



2 GA ELEVATION - EAST  
0017 1 : 250



PRINT IN COLOUR

FOR INFORMATION

REV	DATE	AMENDMENT	DSN	DRN	CHK	APP
A02	13.12.22	DEVELOPMENT APPLICATION	HAS	HAS	JPD	BH
A01	03.11.22	ISSUED FOR INTERMEDIATE DETAILED DESIGN	HAS	HAS	JPD	BH
A	04.08.22	ISSUED FOR REFERENCE DESIGN	HAS	HAS	JPD	IS

ORIG SIZE A1 AT ORIGINAL PLOT SIZE

This document must not be copied without PTA's written permission, and the contents thereof must not be imparted to a third party nor be used for any unauthorised purpose.

ARMADALE LINE UPGRADE ALLIANCE  
Innovation to Reality

Contractor No: LXR-P1-Z1-CR-SN-AR-DWG-00103

VALIDATION

SIGNATURE

DATE

DATE APPROVED

REFERENCES

SCALE

1 : 250

DATUM

HORIZONTAL: PCG20

VERTICAL: AHD71

DESIGNED HASSELL

DRAWN HASSELL

CHECKED J.P. DAVIES

APPROVED B. HOY

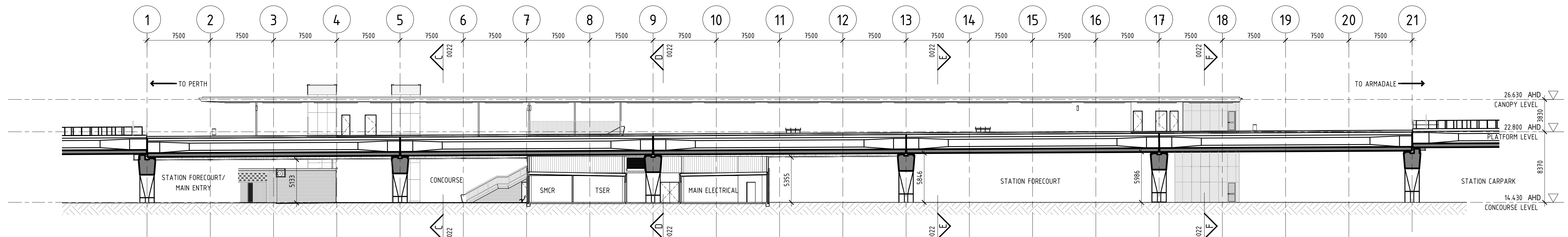
DATE 04.08.2022

VICTORIA PARK TO CANNING  
LEVEL CROSSING REMOVAL

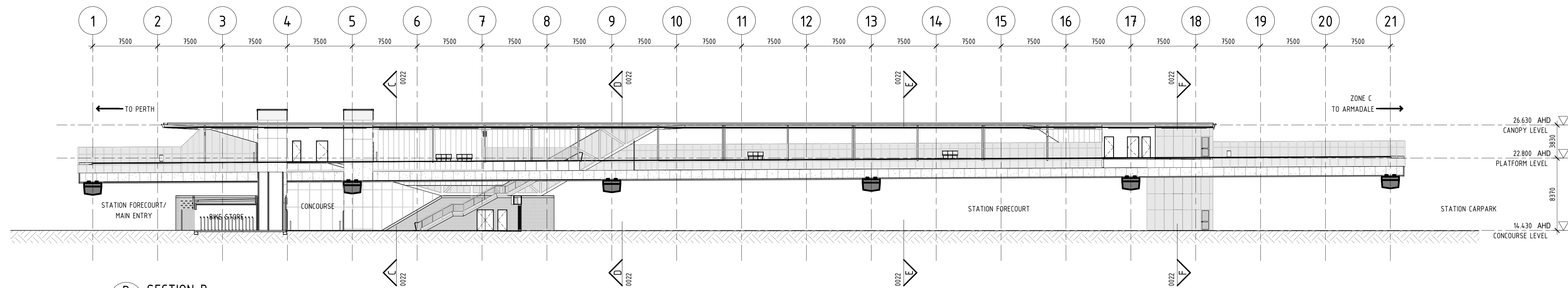
CARLISLE - ARCHITECTURAL  
GENERAL ARRANGEMENT  
GA ELEVATIONS

PTA Drawing No: 04-A-69-AR0020 Rev: A02

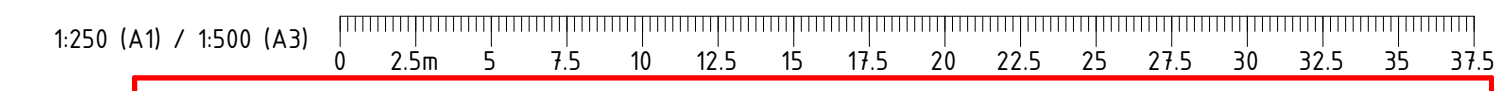




**A SECTION A**  
0017 1: 250



**B SECTION B**  
0017 1: 250



PRINT IN COLOUR

**FOR INFORMATION**

REV	DATE	AMENDMENT	DSN	DRN	CHK	APP
A02	13.12.22	DEVELOPMENT APPLICATION	HAS	HAS	JPD	BH
A01	03.11.22	ISSUED FOR INTERMEDIATE DETAILED DESIGN	HAS	HAS	JPD	BH
A	04.08.22	ISSUED FOR REFERENCE DESIGN	HAS	HAS	JPD	IS
ORIG SIZE	AT ORIGINAL PLOT SIZE					
A1			<small>This document must not be copied without PTA's written permission, and the contents thereof must not be imparted to a third party nor be used for any unauthorised purpose.</small>			

Contractor No: LXR-P1-Z1-CR-SN-AR-DWG-00104

VALIDATION  
SIGNATURE  
DATE  
DATE APPROVED

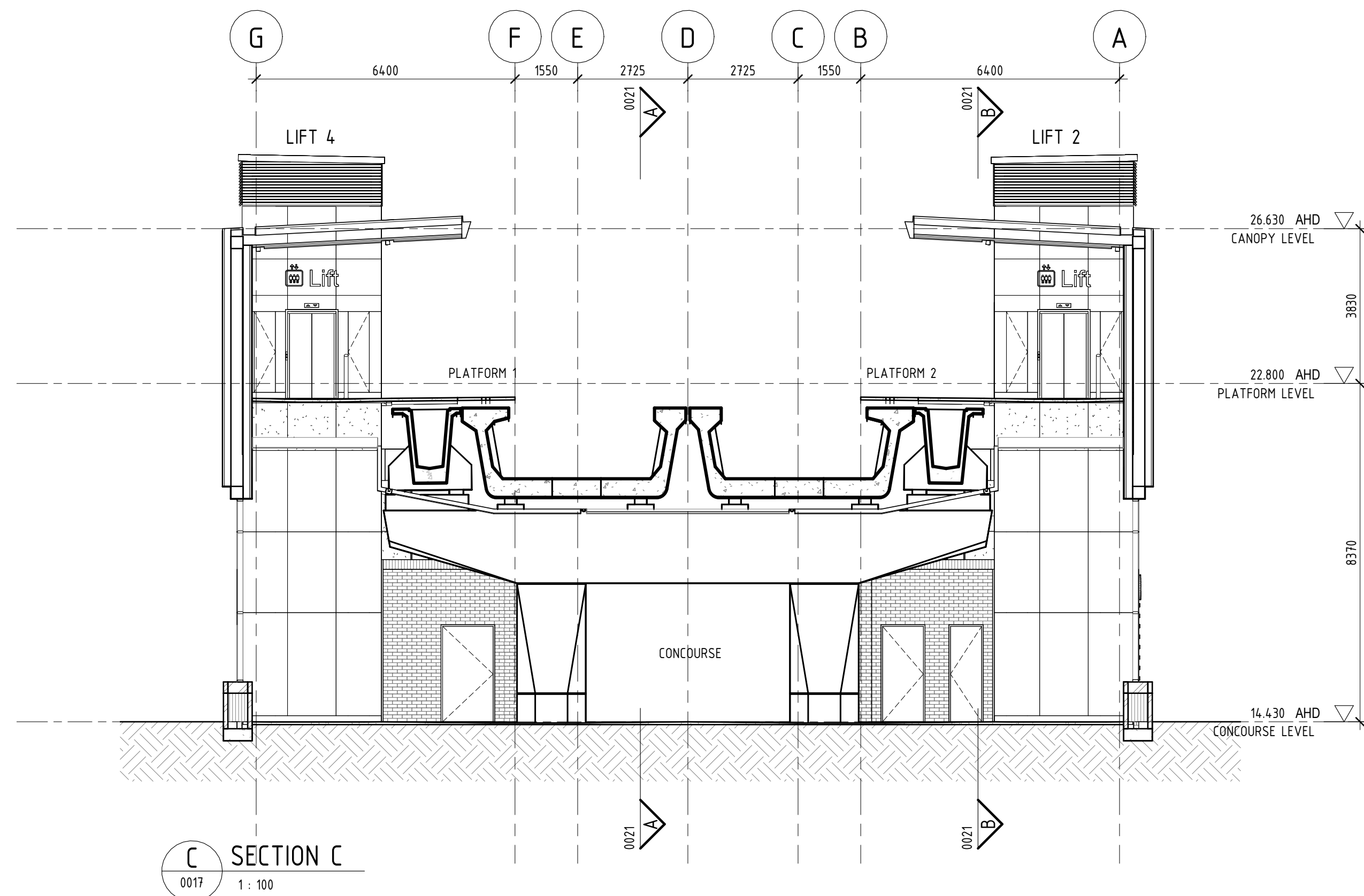
REFERENCES

SCALE  
1 : 250  
DATUM  
HORIZONTAL: PCG20  
VERTICAL: AHD71

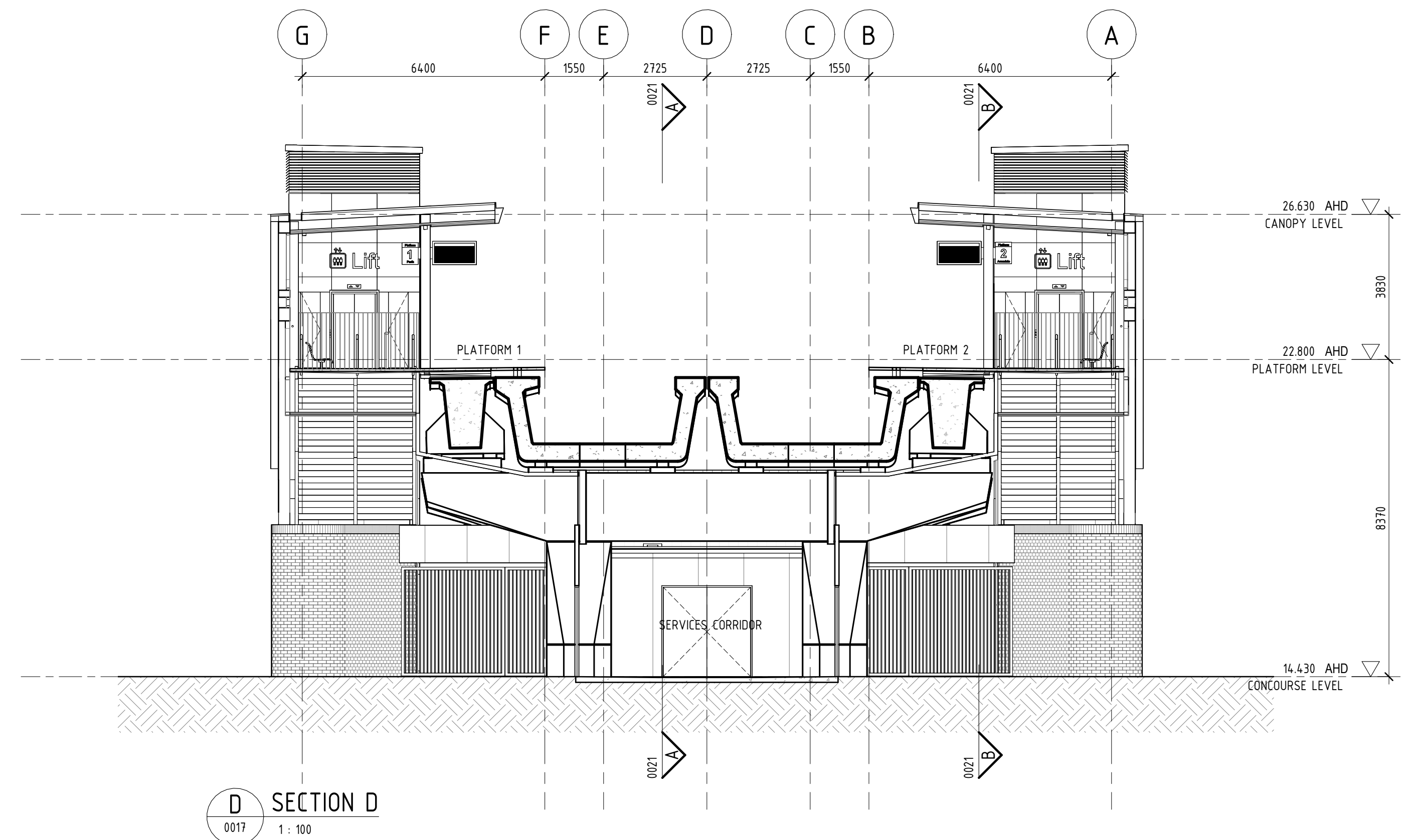
DESIGNED HASSELL  
DRAWN HASSELL  
CHECKED J.P. DAVIES  
APPROVED B. HOY  
DATE 04.08.2022

VICTORIA PARK TO CANNING  
LEVEL CROSSING REMOVAL  
CARLISLE - ARCHITECTURAL  
GENERAL ARRANGEMENT  
GA LONG SECTIONS  
PTA Drawing No: 04-A-69-AR0021 Rev: A02

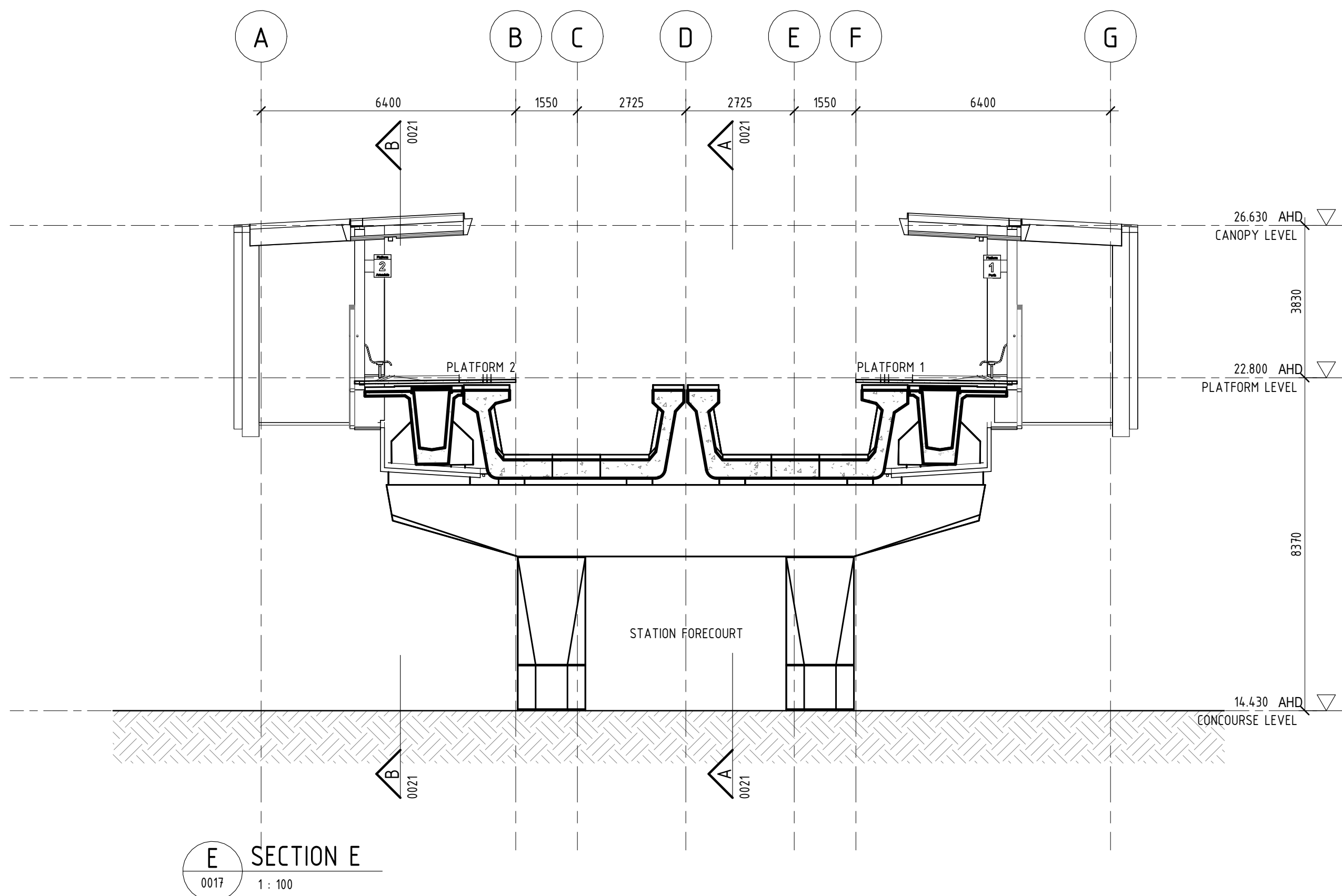




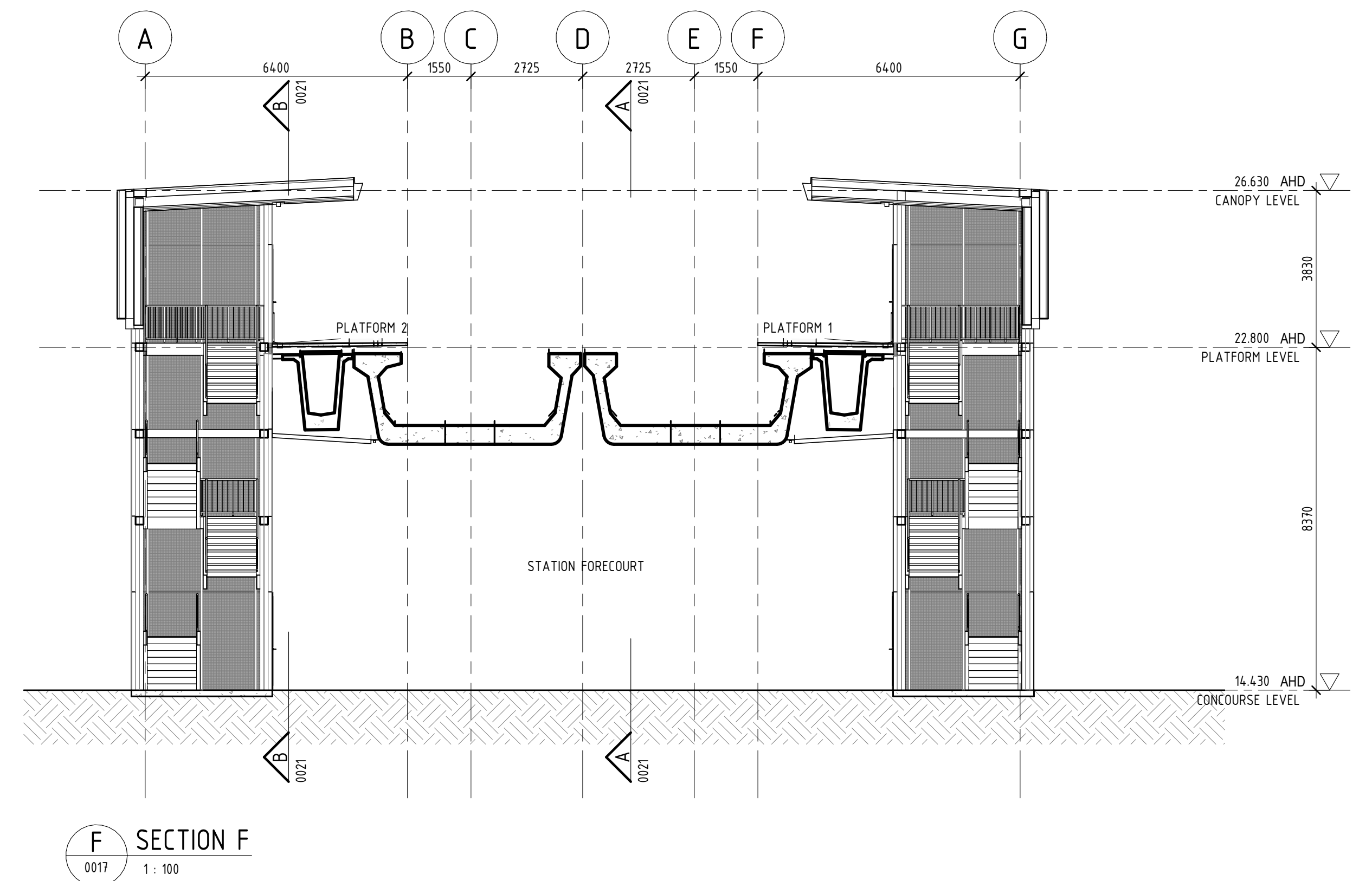
**C SECTION C**  
0017 1 : 100



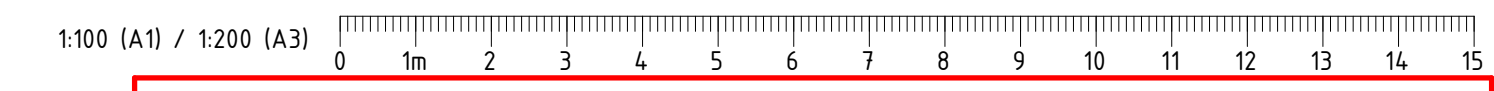
**D SECTION D**  
0017 1 : 100



**E SECTION E**  
0017 1 : 100



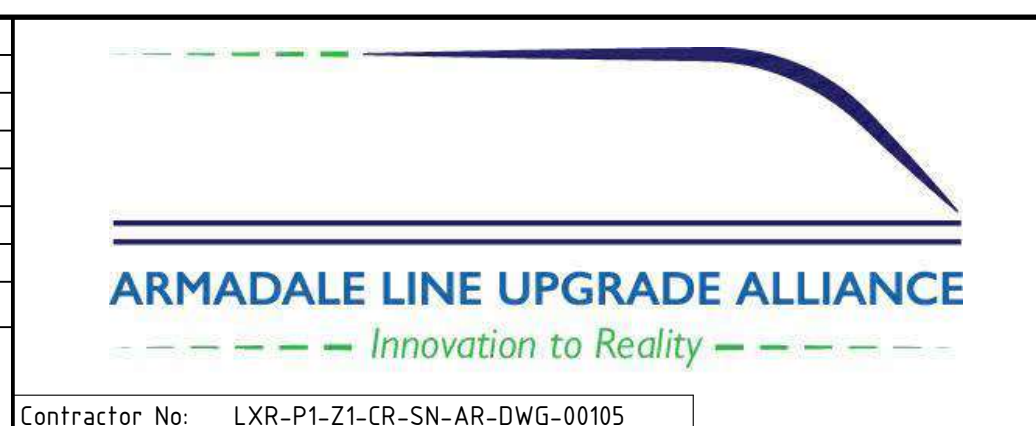
**F SECTION F**  
0017 1 : 100



PRINT IN COLOUR

**FOR INFORMATION**

REV	DATE	AMENDMENT	DSN	DRN	CHK	APP
A02	13.12.22	DEVELOPMENT APPLICATION	HAS	HAS	JPD	BH
A01	03.11.22	ISSUED FOR INTERMEDIATE DETAILED DESIGN	HAS	HAS	JPD	BH
A	04.08.22	ISSUED FOR REFERENCE DESIGN	HAS	HAS	JPD	IS
ORIG SIZE	AT ORIGINAL PLOT SIZE		This document must not be copied without PTA's written permission, and the contents thereof must not be imparted to a third party nor be used for any unauthorised purpose.			
A1			Contractor No: LXR-P1-Z1-CR-SN-AR-M3D-00001.rvt			



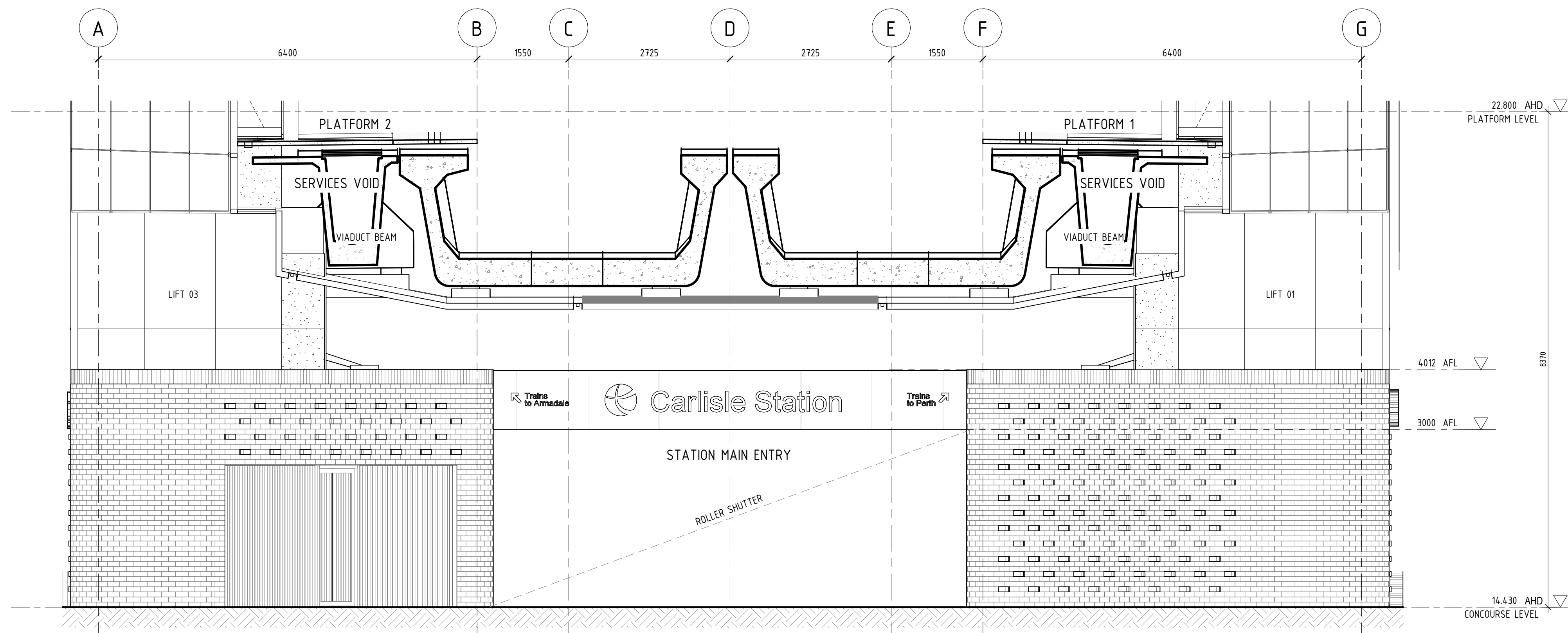
VALIDATION  
SIGNATURE  
DATE  
DATE APPROVED

REFERENCES  
SCALE  
1 : 100  
DATUM  
HORIZONTAL: PCG20  
VERTICAL: AHD71

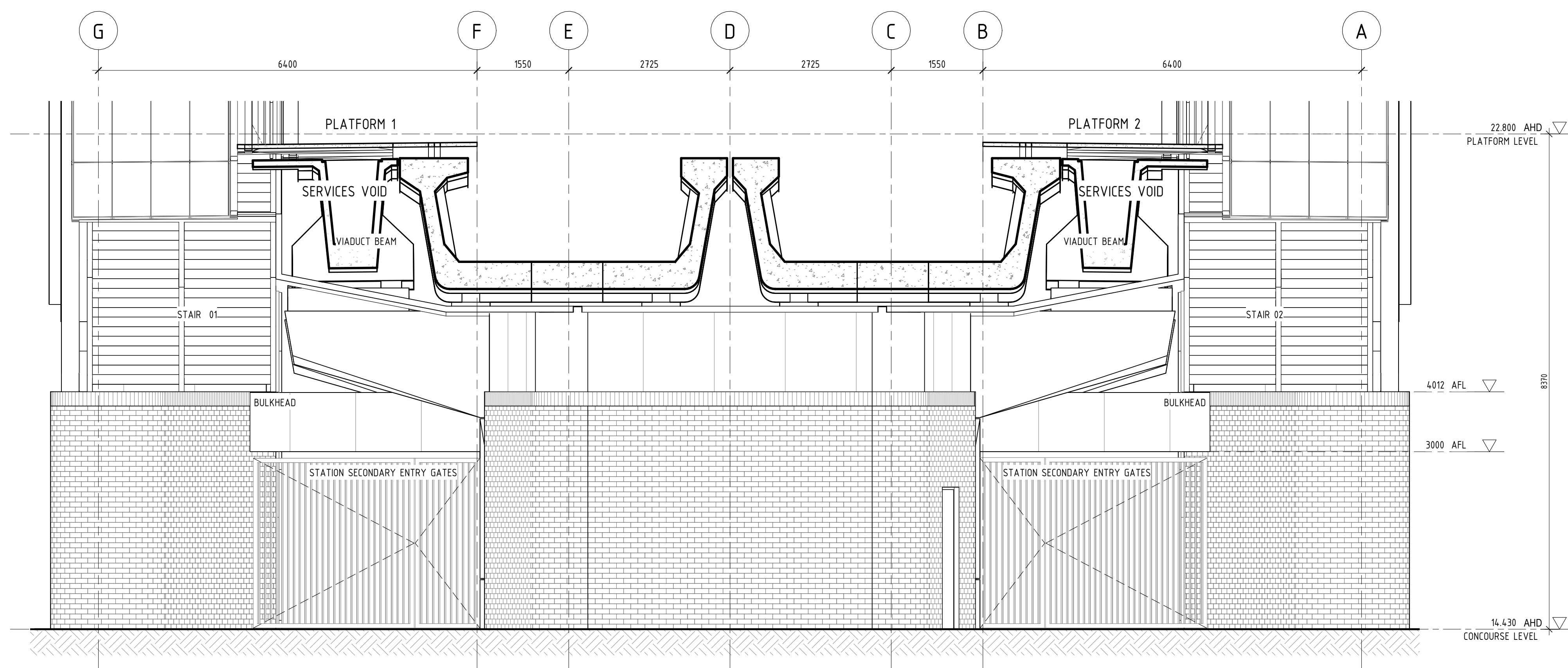
DESIGNED HASSELL  
DRAWN HASSELL  
CHECKED J.P. DAVIES  
APPROVED B. HOY  
DATE 04.08.2022

Government of Western Australia  
Public Transport Authority  
VICTORIA PARK TO CANNING  
LEVEL CROSSING REMOVAL  
CARLISLE - ARCHITECTURAL  
GENERAL ARRANGEMENT  
GA CROSS SECTIONS  
PTA Drawing No: 04-A-69-AR0022 Rev: A02



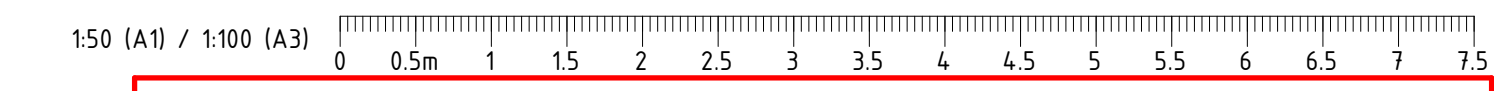


1 ELEVATION - NORTH ENTRY  
0023 1:50



2 ELEVATION - SOUTH ENTRY  
0024 1:50

NOTE  
FEATURE BRICKWORK PATTERN WITH 10mm PROTRUSION TO BE APPLIED TO WALL FACES AT CONCOURSE LEVEL AS INDICATED ON BUILDING FACADES. REFER TO MATERIALS & FINISHES SCHEDULE FOR FINISH & COLOUR.



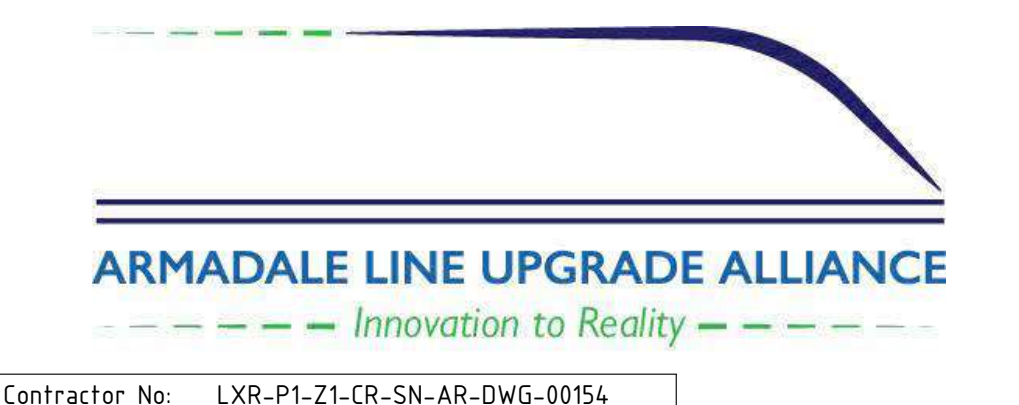
PRINT IN COLOUR

**FOR INFORMATION**

REV	DATE	AMENDMENT	DSN	DRN	CHK	APP
A02	13.12.22	DEVELOPMENT APPLICATION	HAS	HAS	JPD	BH
A01	03.11.22	ISSUED FOR INTERMEDIATE DETAILED DESIGN	HAS	HAS	JPD	BH
A	04.08.22	ISSUED FOR REFERENCE DESIGN	HAS	HAS	JPD	IS

ORIG SIZE A1  
AT ORIGINAL PLOT SIZE

This document must not be copied without PTA's written permission, and the contents thereof must not be imparted to a third party nor be used for any unauthorised purpose.



VALIDATION  
SIGNATURE  
DATE  
DATE APPROVED

REFERENCES

SCALE  
1:50  
DATUM  
HORIZONTAL: PCG20  
VERTICAL: AHD71

DESIGNED HASSELL  
DRAWN HASSELL  
CHECKED J.P. DAVIES  
APPROVED B. HOY  
DATE 04.08.2022

Government of Western Australia  
Public Transport Authority

VICTORIA PARK TO CANNING  
LEVEL CROSSING REMOVAL

CARLISLE - ARCHITECTURAL  
GENERAL ARRANGEMENT  
ELEVATIONS - NORTH AND SOUTH  
PTA Drawing No: 04-A-69-AR0048 Rev: A02