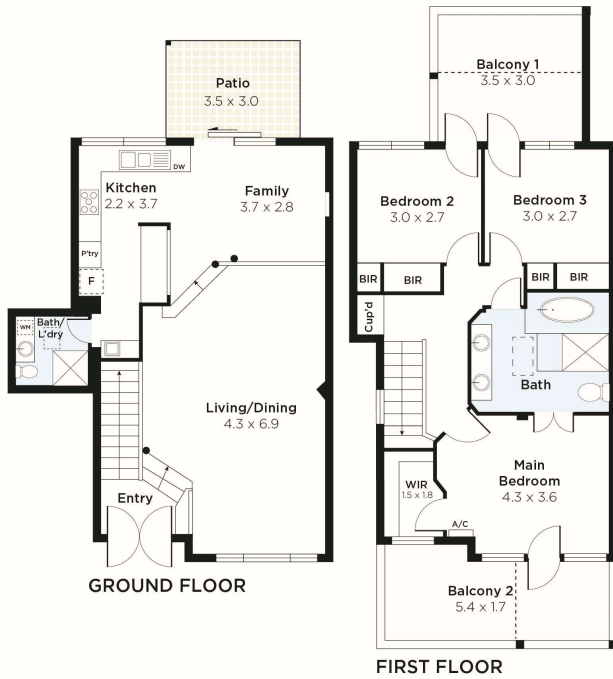


APPROXIMATE AREAS

Internal Living	111 sqm
Balcony 1	10 sqm
Balcony 2	10 sqm
Patio	10 sqm
Carport	16 sqm
External Areas	120 sqm
Total	157 sqm
Total Land Size	256 sqm



1/3 Clydesdale Street, Burswood 6100

Whilst every attempt has been made to ensure the accuracy of the floor plan contained here, measurements are approximate and no responsibility is taken for any error, omission or misstatement. This plan is for illustrative purposes only and should be used as such by any prospective purchaser or tenant.

